

How to install USB driver of HMI i series

MT6000/8000 i series support the function of using a USB to Mini USB cable to download/upload projects from PC. When using the USB cable to download project, PC as Master and HMI as Client. It is necessary to install **EB8000 V2.0.0 or newer version** and USB driver of HMI on PC before at the first time using this function. (The HMI models: **MT6050i / MT6056i / MT6070iH / MT6100i / MT8070iH / MT8100i**)

Note: USB driver is compatible with Windows XP service pack 3 and Vista.

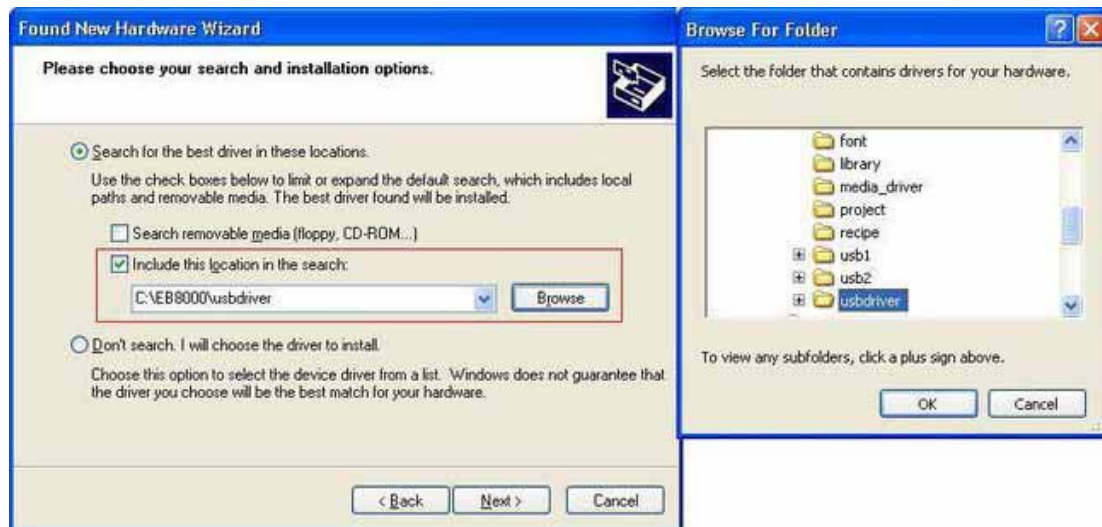
1. Using USB cable mini side plug to HMI and another side plug into PC. The PC will display “Found New Hardware Wizard” dialog. Select “No, not this time” and click “Next”.



2. Select “Install from a list or specific location (Advanced)” and click “Next”.



3. Check “Include this location in the search”, and assign the path to C:\EB8000\usbdriver, and click “Next”.



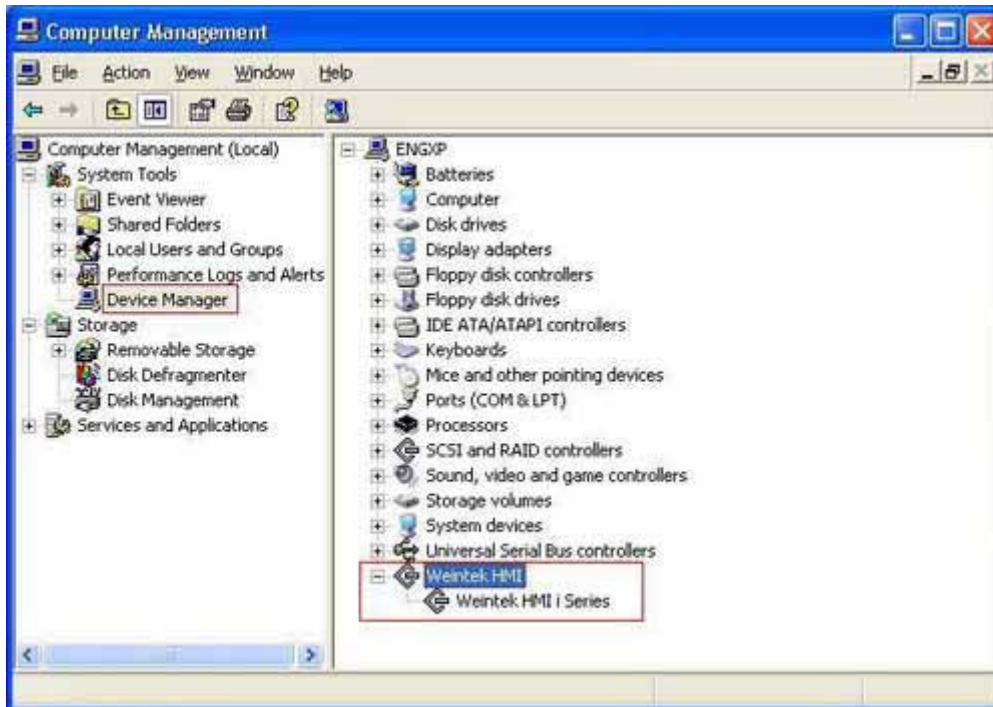
4. After that, it will automatic install Weintek HMI i Series driver from C:\EB8000\usbdriver.



5. The USB driver has been successfully installed after click “Finish”.



6. User can go Computer Management / Device Manager to check if the Weintek HMI i Seires successfully be installed.



7. User can download project to HMI i series through USB cable.

