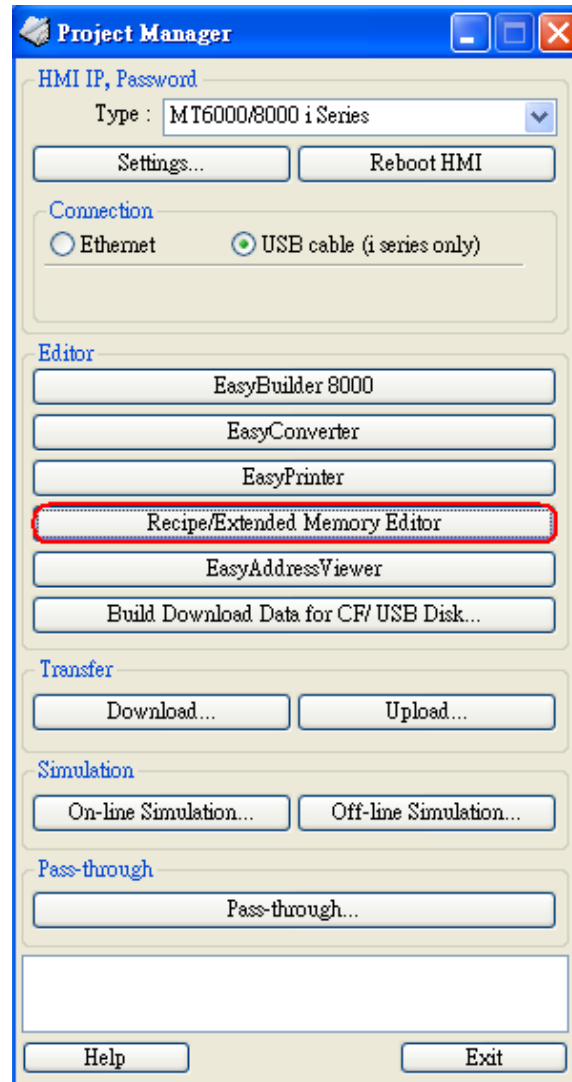
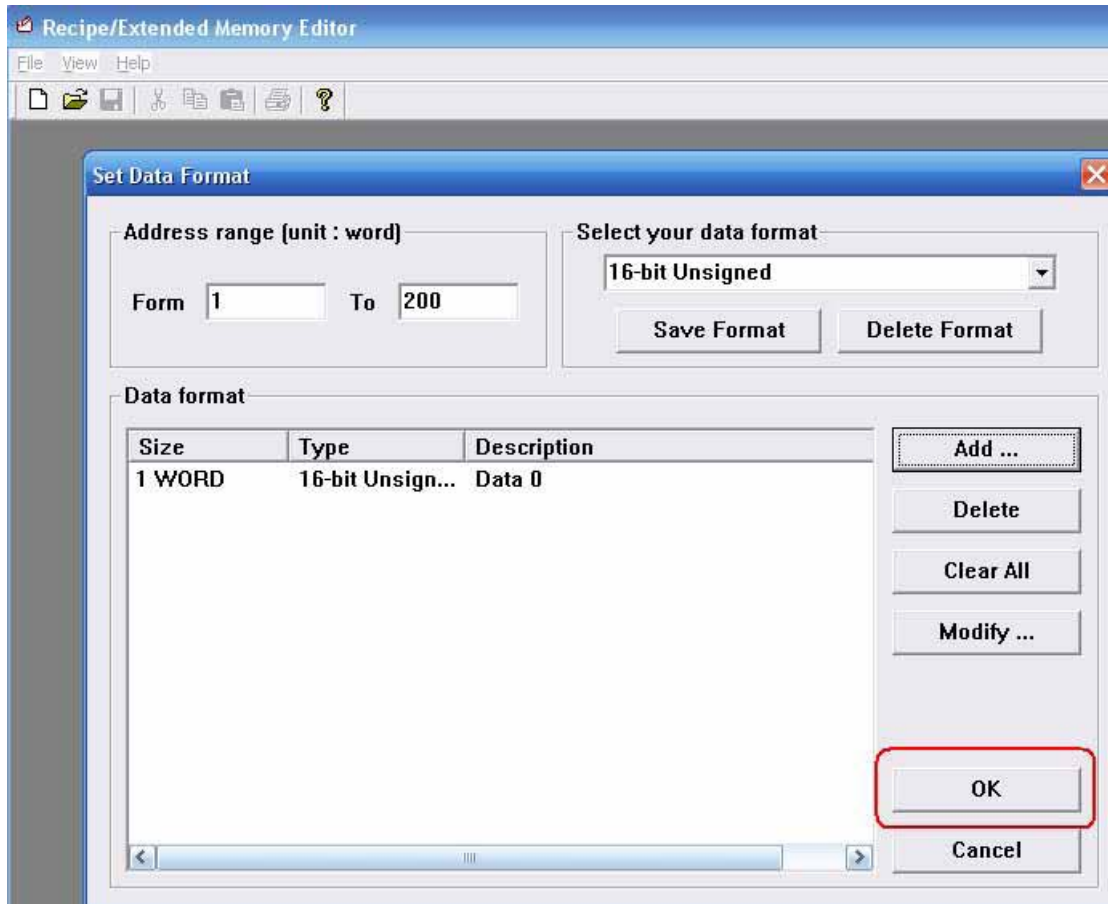


How to translate excel file to emi file

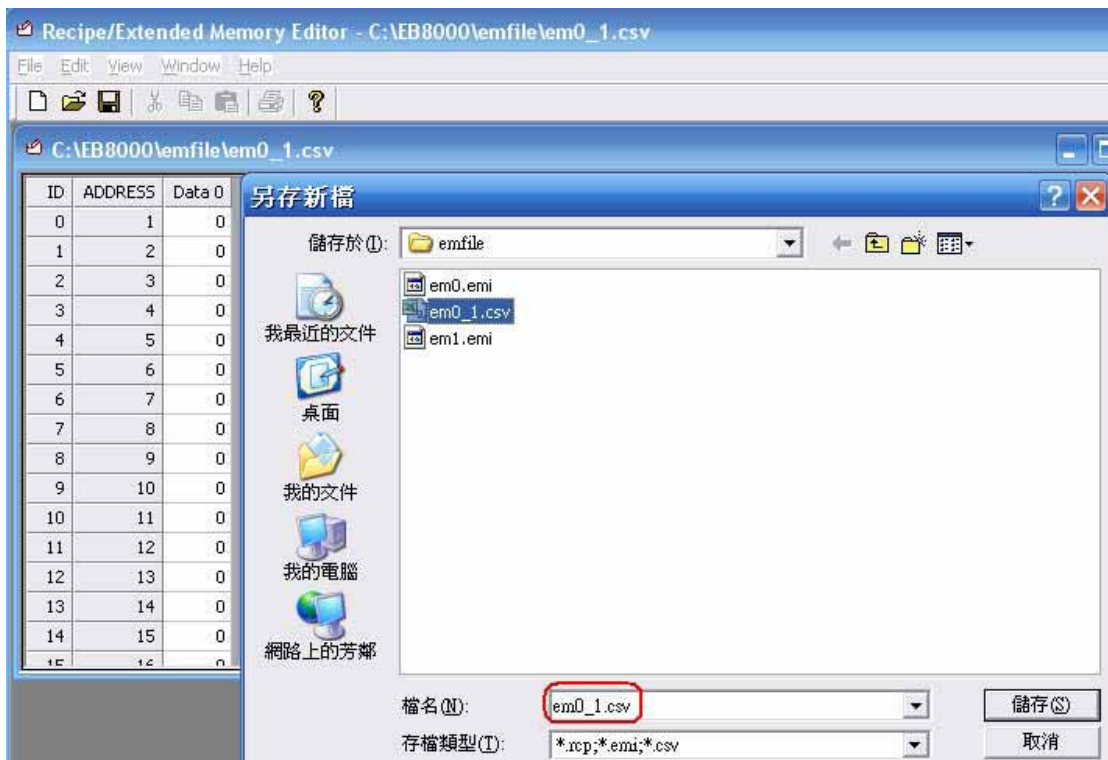
1. Open "Recipe/Extended Memory Editor"



2. Open emi file and input the data, then press OK.



3. Save file as *.csv



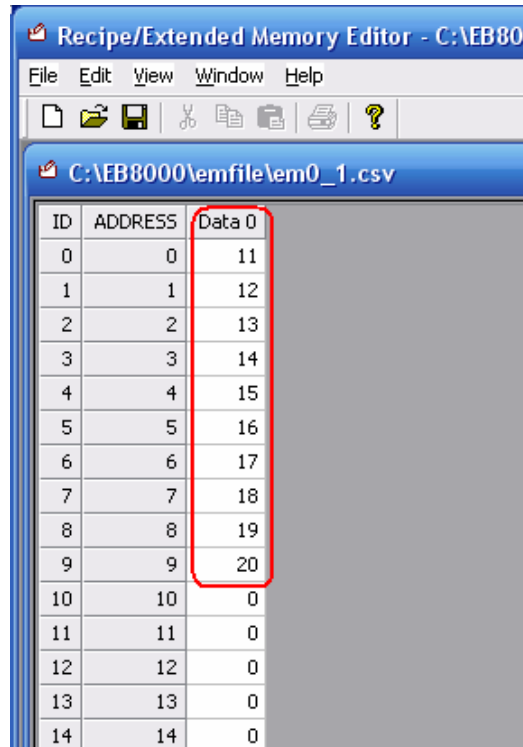
4. Edit em0_1.csv by Excel



The screenshot shows a Microsoft Excel window titled "Microsoft Excel - em0_1.csv". The menu bar includes "檔案(F)", "編輯(E)", and "檢視(V)". Below the menu bar are several icons for file operations. The spreadsheet has two columns, A and B. The data in column A is as follows:

	A	B
1	11	
2	12	
3	13	
4	14	
5	15	
6	16	
7	17	
8	18	
9	19	
10	20	
11	0	

5. After editing file by excel (em0_1.csv), open the csv by Recipe Editor, you can see the data changed.



6. Use “Save as” to save a file with em0_1.emi.

