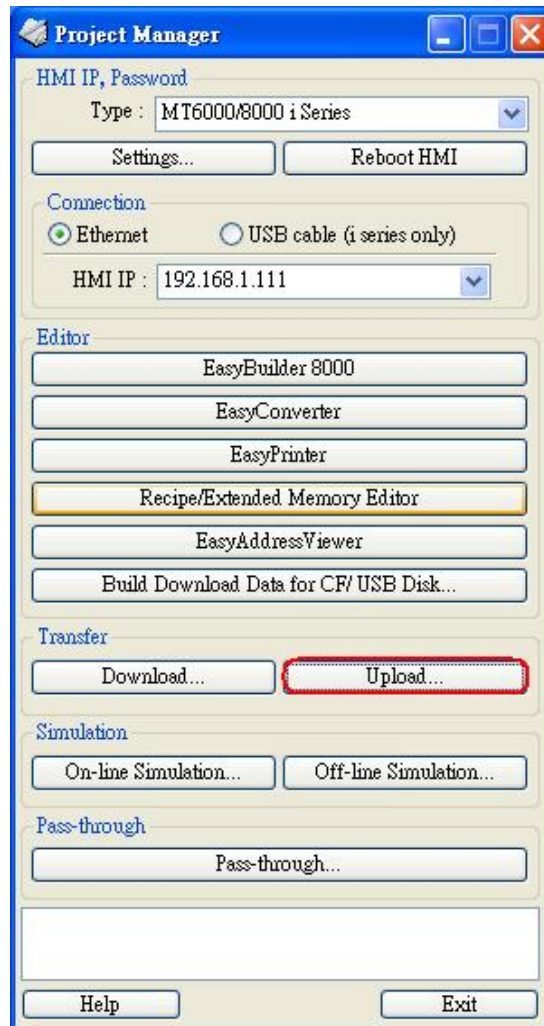
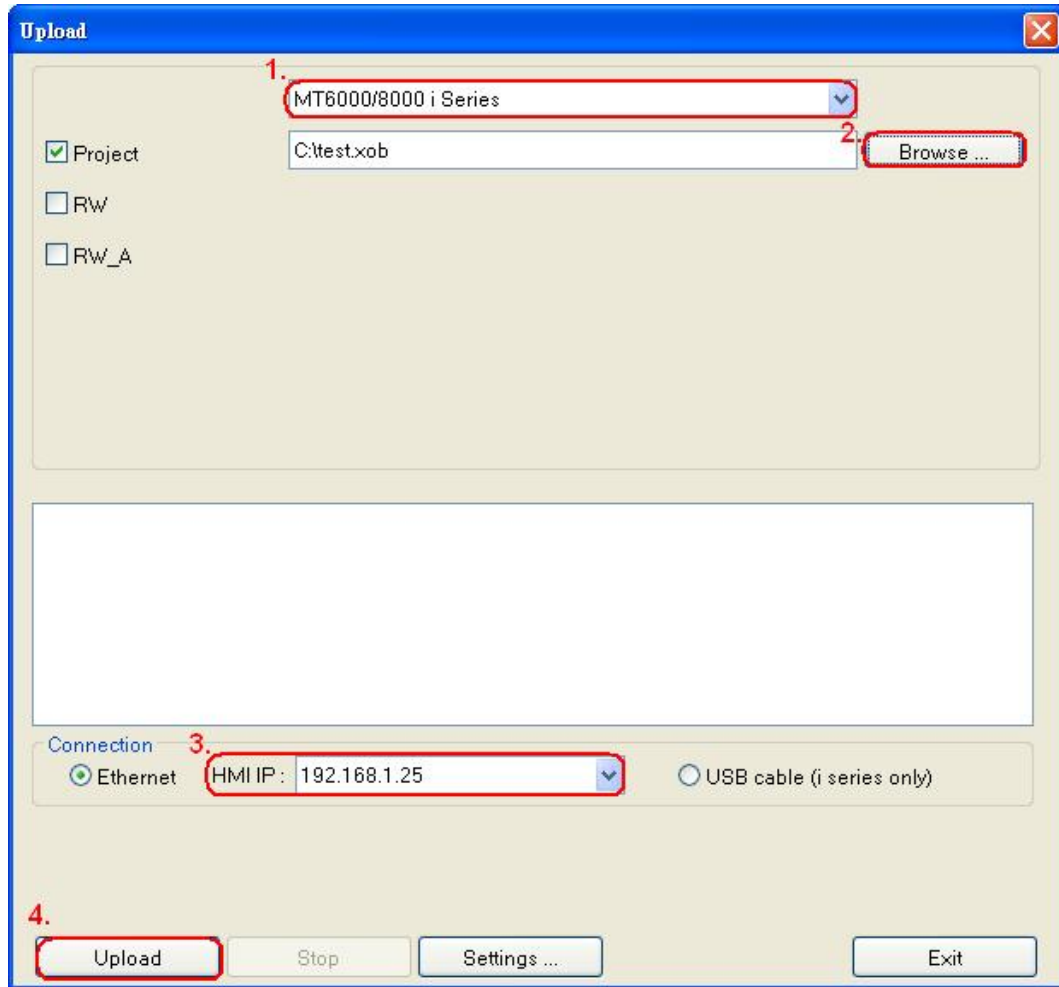


How to use upload function

1. Click "Upload" button from Project Manager.



2. After Upload dialog popup, click Browse to select the file store location. Designate the HMI IP address and press Upload button.



3. When uploading is finished, press “Exit”. The upload file will be created.

RASETUP1.LOG	17 KB
RASETUP2.LOG	8 KB
RASETUP3.LOG	2 KB
RASETUP4.LOG	5 KB
RASETUP5.LOG	5 KB
RASETUP.LOG	13 KB
RHDSetup.log	1 KB
test.xob	863 KB