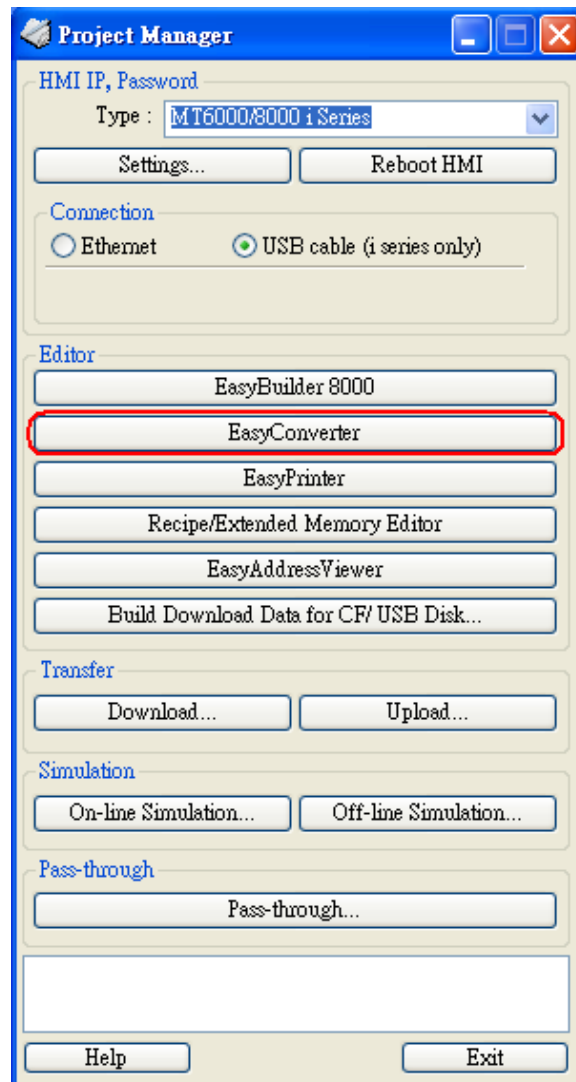
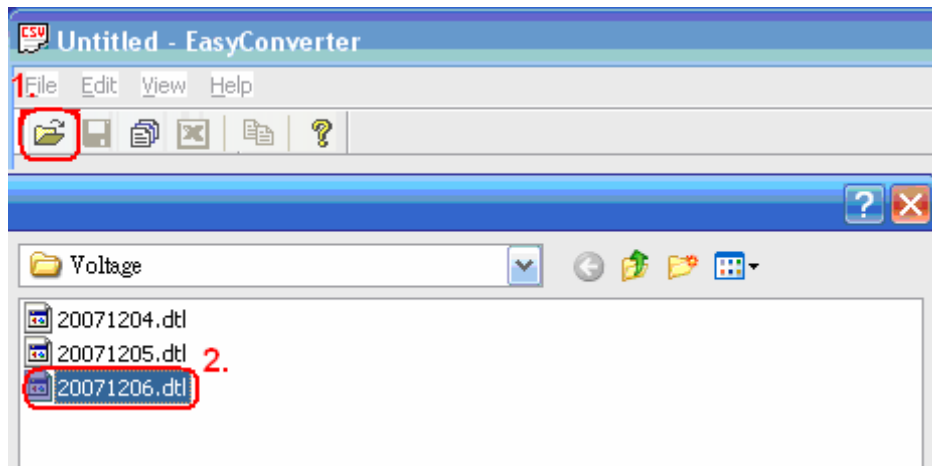


## How to translate dtl to csv file

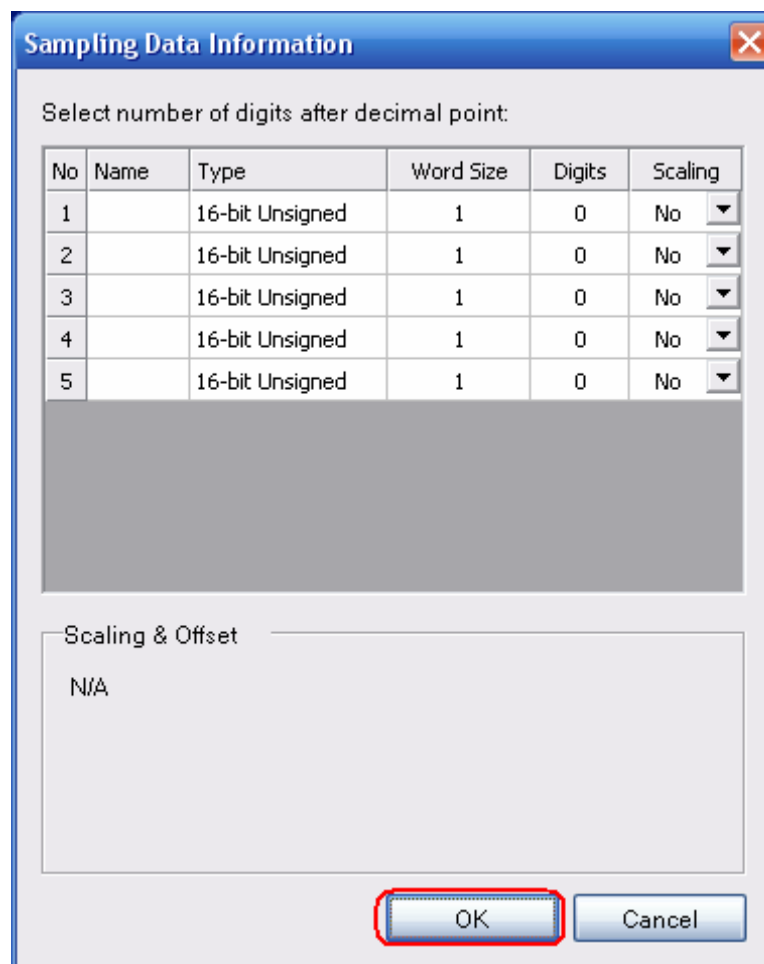
1. After users get the \*.dtl file from HMI, open Project Manager and press EasyConverter



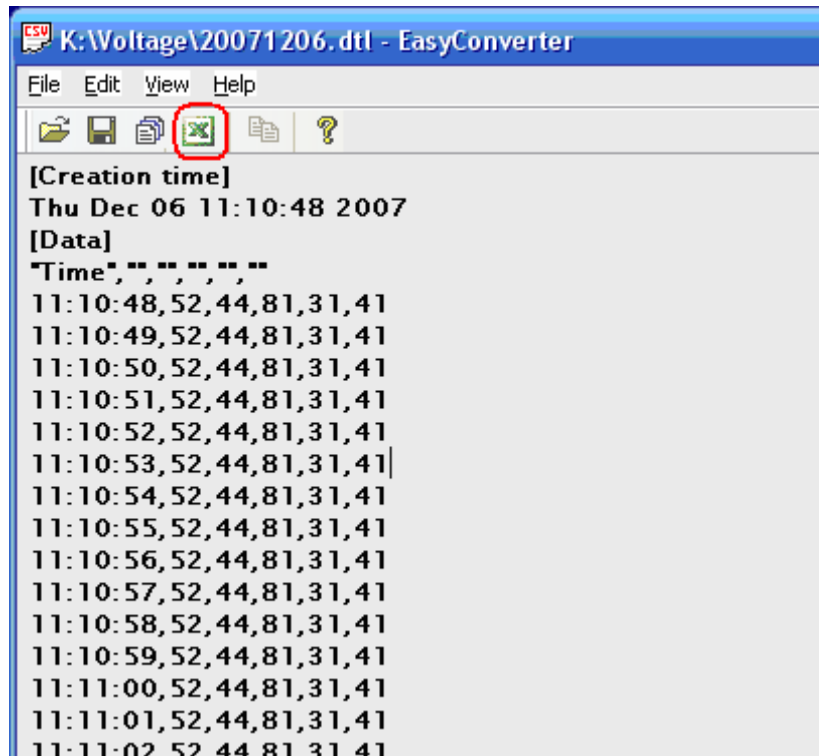
2. Select Open file and choose the desired \*.dtl file from your pc.



3. Press OK for reading the \*.dtl file.



4. Press "EXCEL" icon to translate the file.



5. The \*.dtl file will be translated to \*.csv file by Excel.

	A	B	C	D	E	F
1	[Creation time]					
2	Thu Dec 06 11:10:48 2007					
3	[Data]					
4	Time					
5	11:10:48	52	44	81	31	41
6	11:10:49	52	44	81	31	41
7	11:10:50	52	44	81	31	41
8	11:10:51	52	44	81	31	41
9	11:10:52	52	44	81	31	41
10	11:10:53	52	44	81	31	41
11	11:10:54	52	44	81	31	41
12	11:10:55	52	44	81	31	41
13	11:10:56	52	44	81	31	41
14	11:10:57	52	44	81	31	41
15	11:10:58	52	44	81	31	41
16	11:10:59	52	44	81	31	41