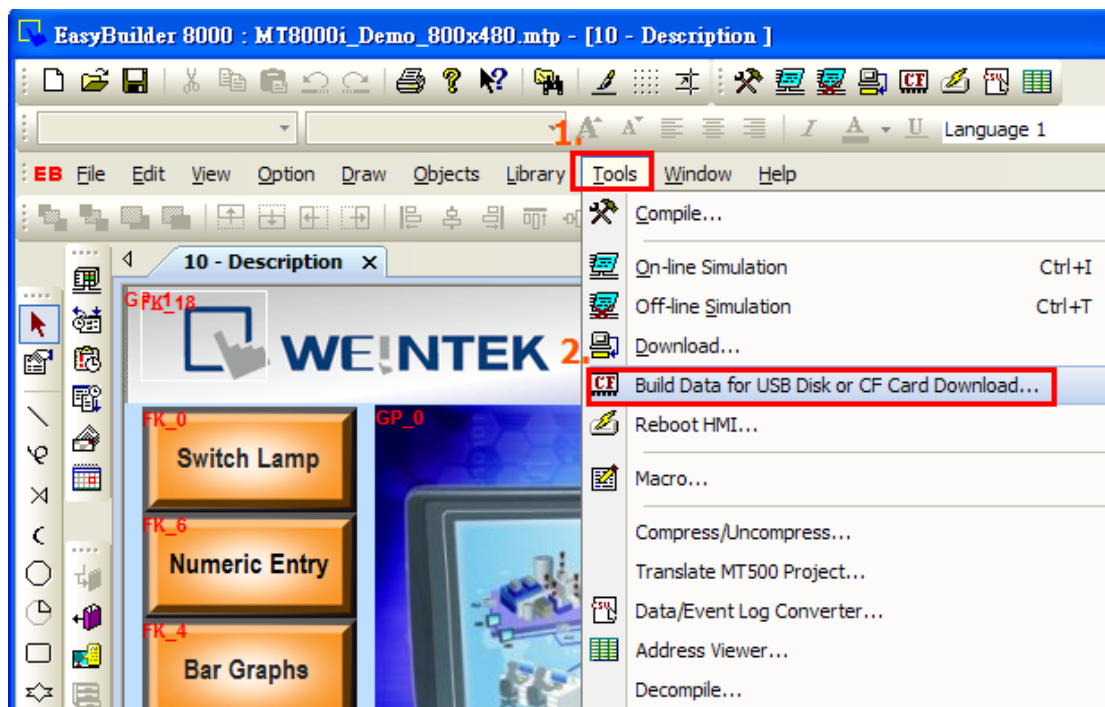


## How to Download/Upload Project with USB Device

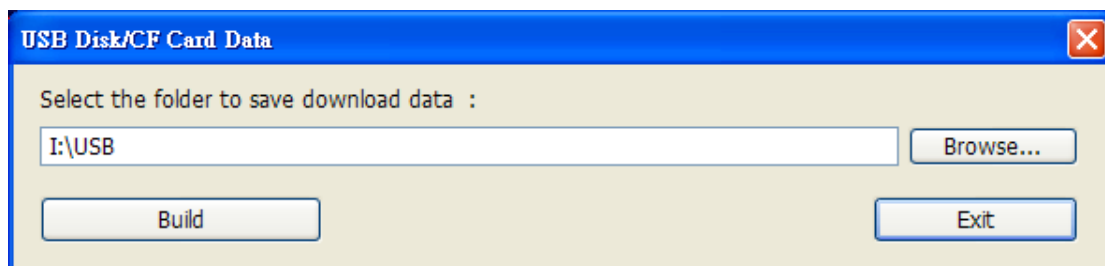
[Download]

Step1. Plug a USB Disk on PC USB port.

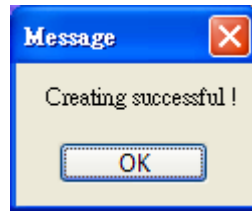
Step2. In the EB8000, go to [Tools] / [Build Data for USB Disk or CF card Download...]



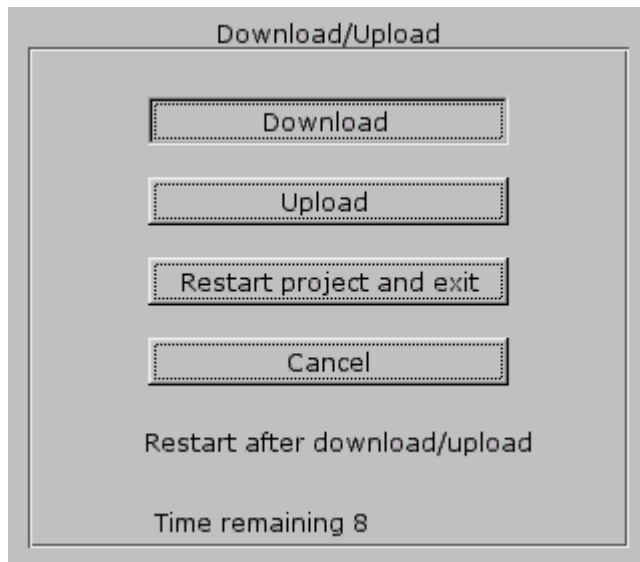
Step 3. Assign a folder name or use [Browse] for saving the project and click [Build]



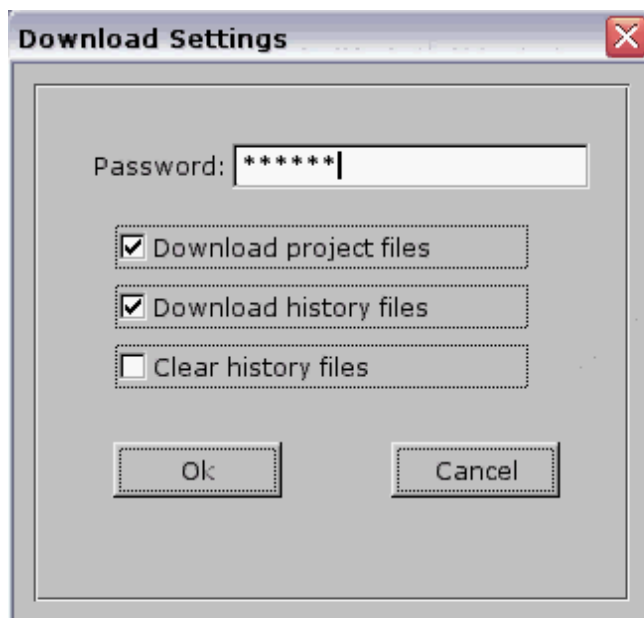
Step 4. When project is saved to USB, the message will appears as below.



Step 5. Plug USB in HMI USB port, a dialogue of Download/Upload appears, click [Download].

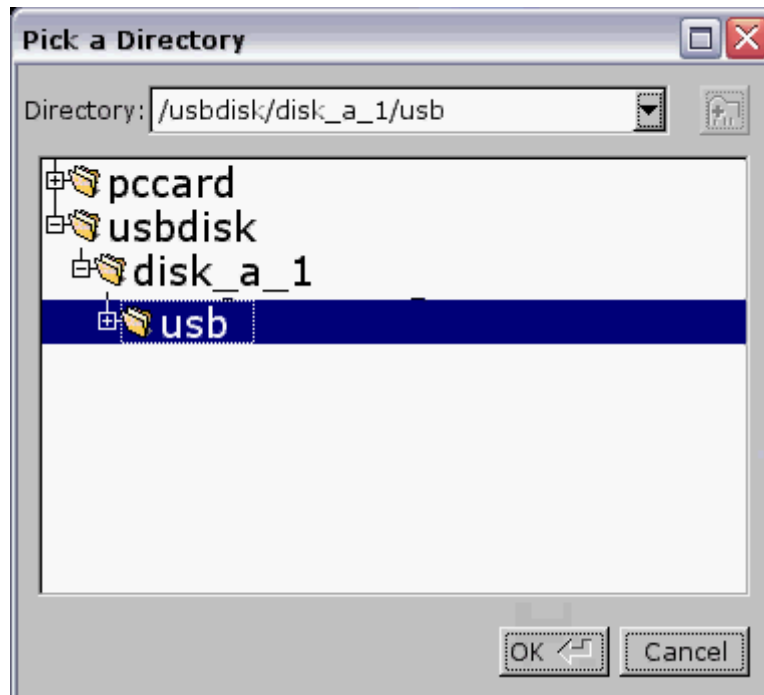


Step 6. Enter Download password and click [OK]



Step 7. Select usb disk -> click usb folder -> click OK to start downloading

project.



Step 8. Downloading project Files...

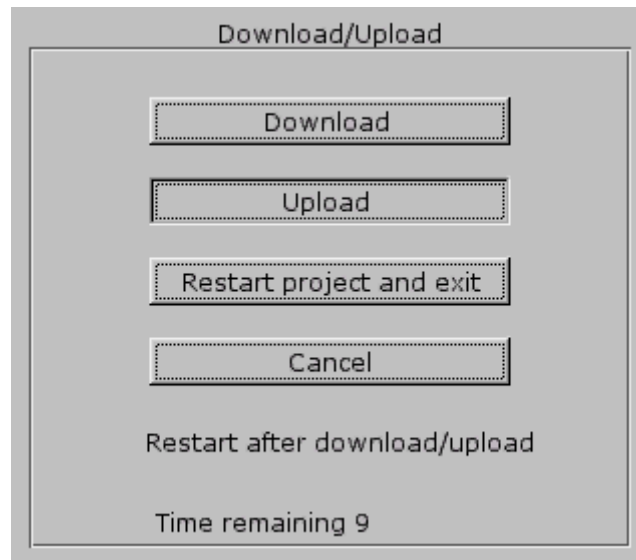


Step 9. After project download success, project will display on the HMI screen.

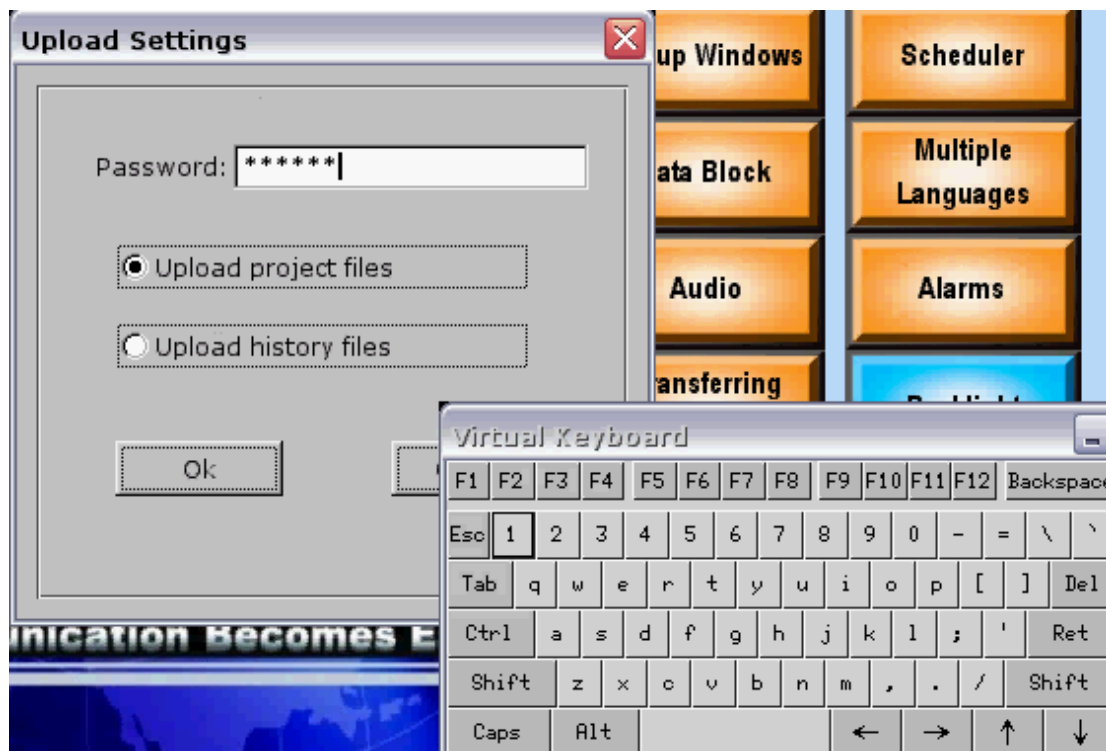


## [Upload]

Step 1. Plug a USB Disk on HMI USB port, a dialogue of Download/Upload appears, click [Upload].

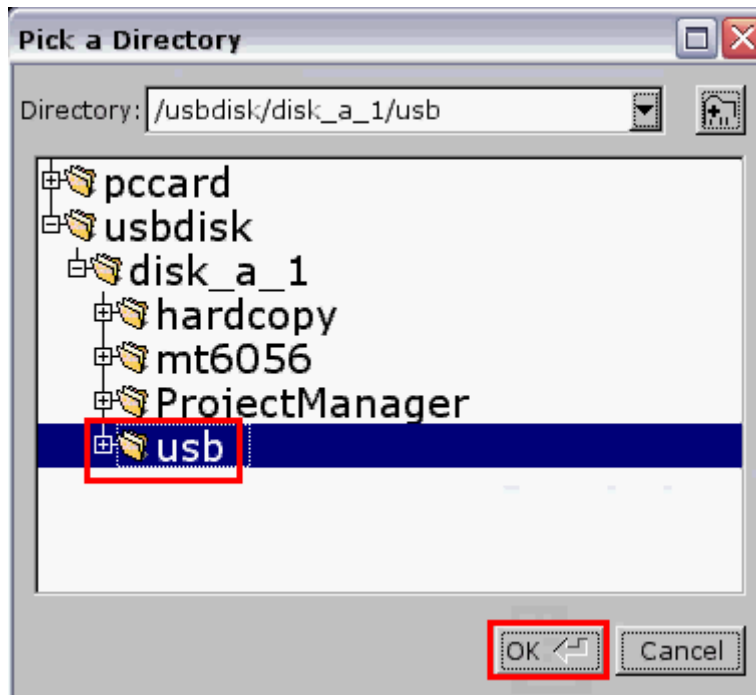


Step 2. Enter Upload password and click [OK]



Step 3. Select usb disk -> click usb folder for saving the file to this folder ->

click OK to upload project.



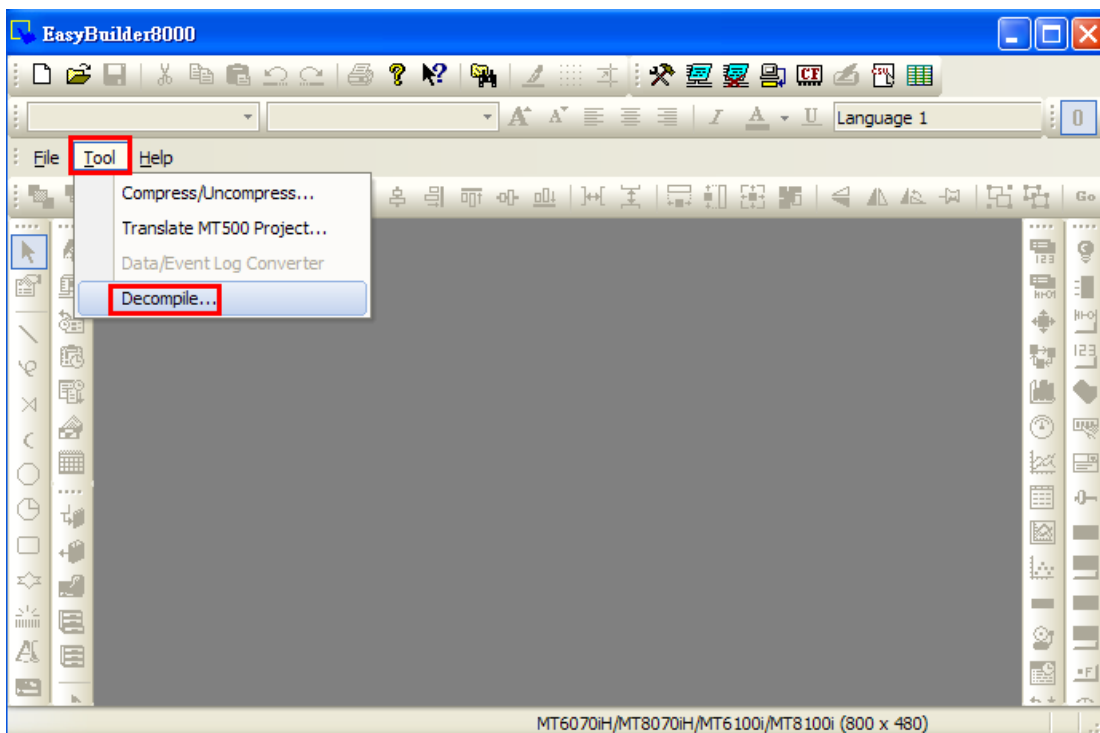
Step 4. Upload Project Files...



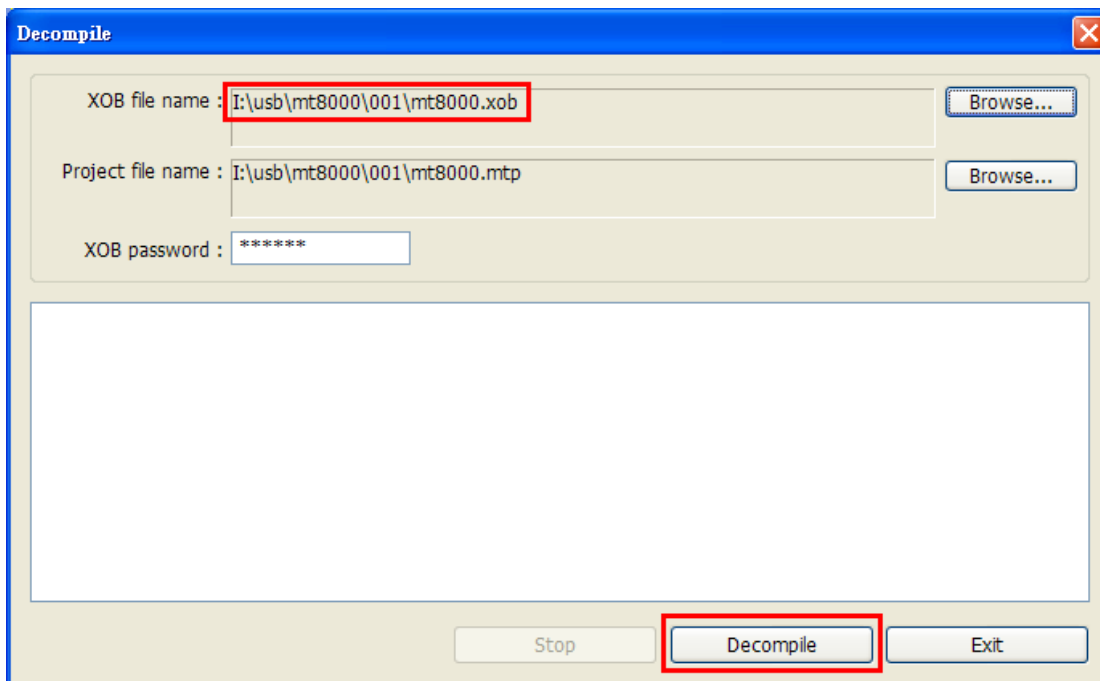
Step 5. Plug USB Disk to PC, Go to 001 and add a suffix "xob" in mt8000



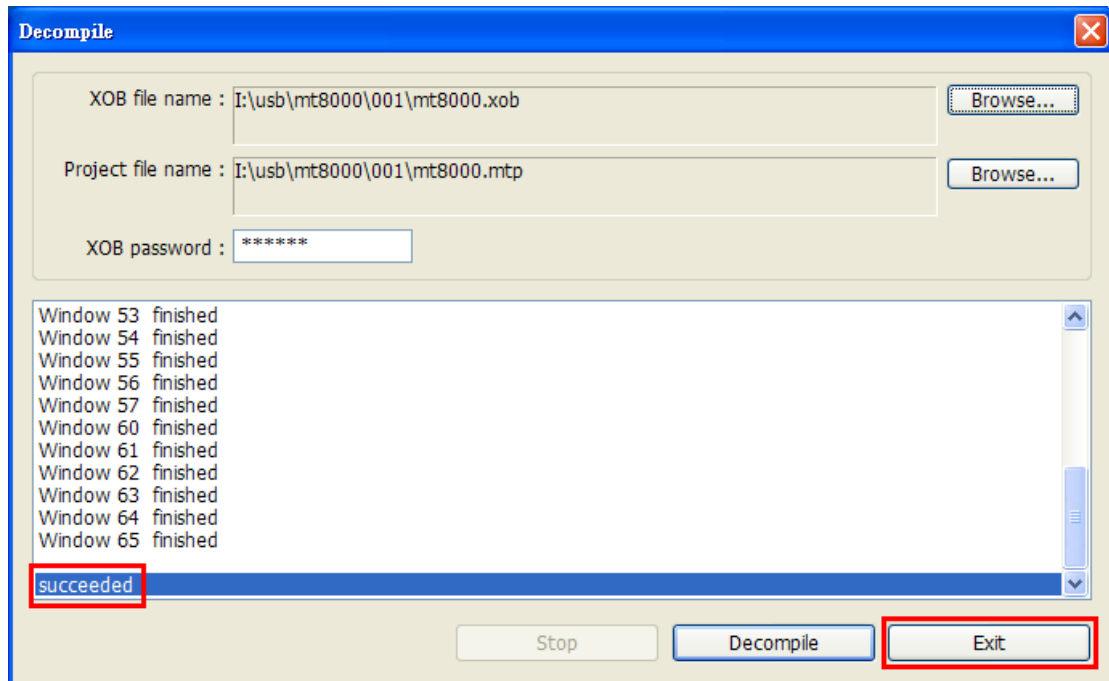
Step 6. Go to EB8000/Tools/Decompiles...



Step 7. Select mt8000.xob in USB disk and click [Decompile]



Step 8. When decompile success, click exit and open mtp file in USB disk.



Step 9. Finish uploading procedure.