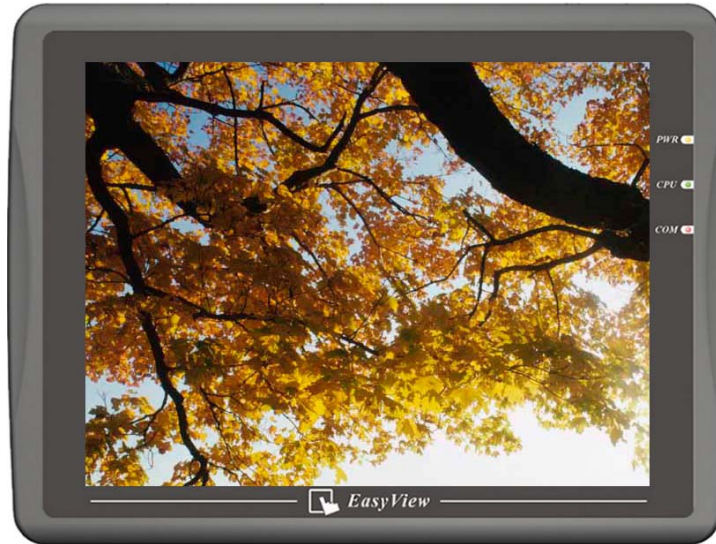


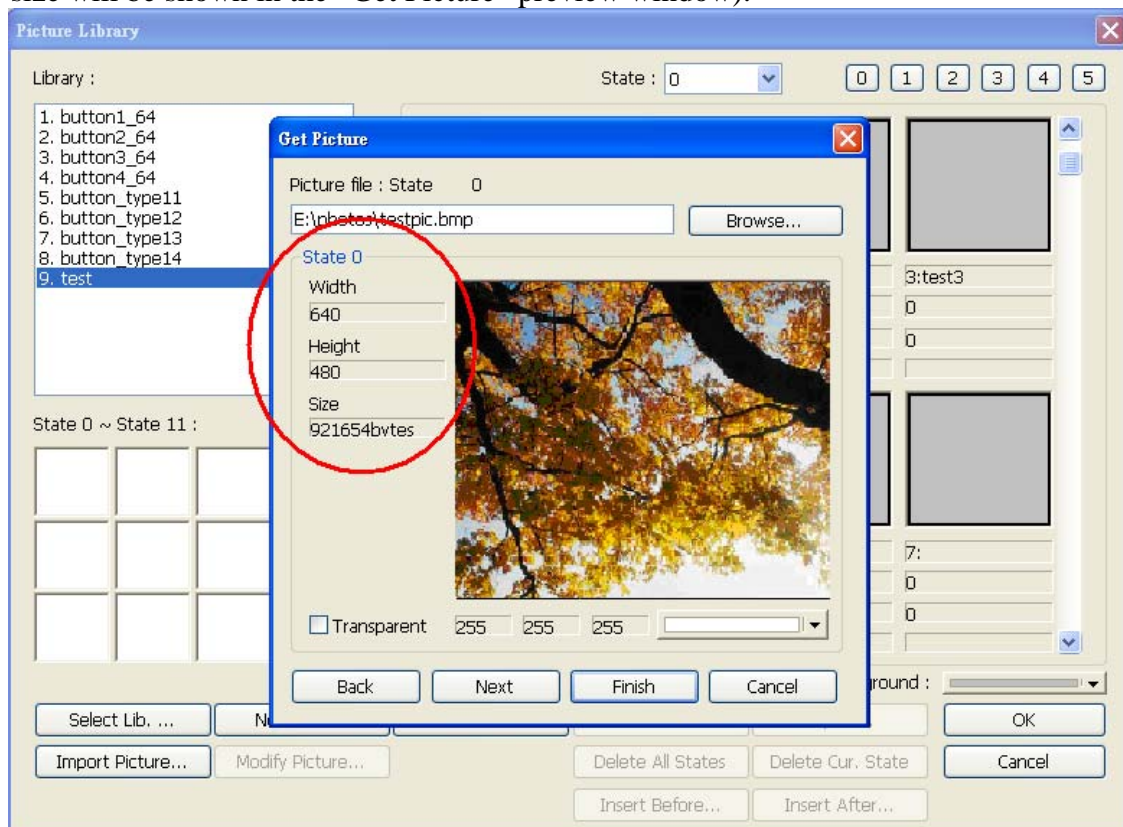
Speed Up the Display Rate on MT8000

When a large image is displayed, for example, using a 65536 color image as background image, may cause the HMI process speed to slow down. Users can follow the instructions below to speed up the display rate of image.



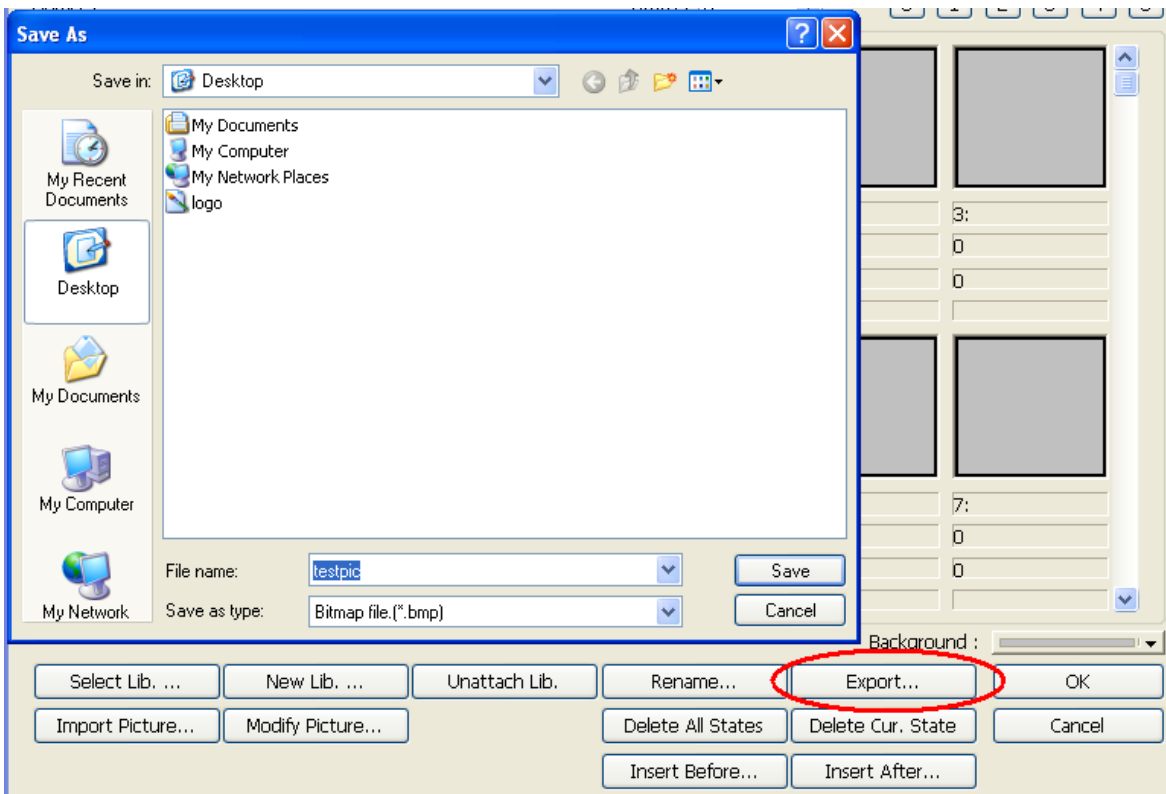
Step 1

While using an image file as background in full screen, the image size shouldn't exceed the display window size. A BMP format image file is recommended. The following picture shows that if the display window size is 640*480, the size of imported image will be limited to 640*480. (the image size will be shown in the "Get Picture" preview window).



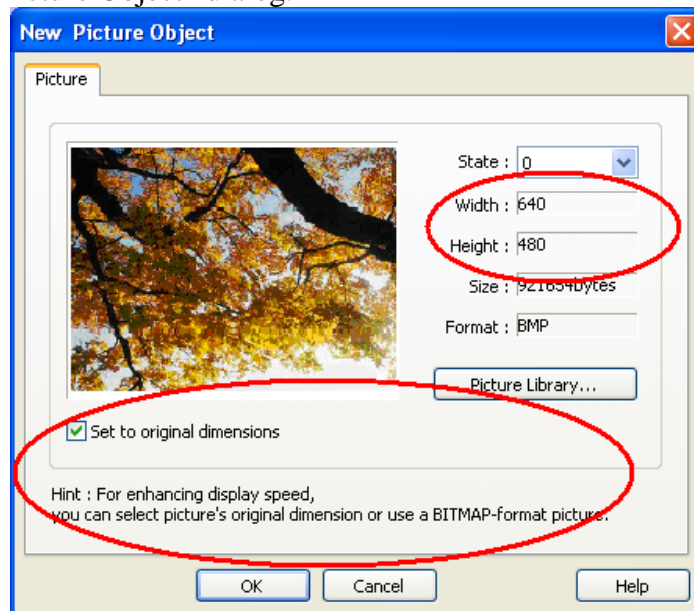
If the image size exceeds display window size, you can export the image and resize it by using

WINDOWS image processing tool.



Step 2

The picture object needs to use original dimensions. Check the “Set to original dimensions” check box in the “New Picture Object” dialog.



Sometimes, the image size already exceeds the display window size. Even though the “Set to original dimensions” option is checked, the image still cannot be displayed in original size. You should go back to step 1 and follow the instructions to resize the image and import it again.