

MT8000/6000 Touch Panel Calibration and System Initialization

1. Switch SW1 to ON position (as shown in picture 1). Press “Reset” or re-plug in the HMI.



Picture 1

2. Touch panel calibration screen is shown as follows. Put the HMI screen perpendicular to your line-of-sight, and point your finger at the center of the cross icon displayed on the screen. The cross icon will appear in five positions of the screen: up-left corner, up-right corner, down-right corner, down-left corner and the center, as shown in (picture 2).



Picture 2

- The HMI will automatically restart after finishing calibration. Afterwards, a warning message will appear (as shown in picture 3).

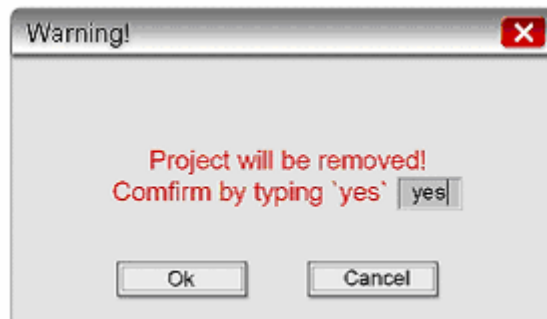


Picture 3

- The warning message shows "Restore to default password?". Users can select "Yes" to restore password or select "No" to discard. If there is no response from the user within 10 seconds, the warning message will automatically be closed.;

Notice: If no further operation other than calibration process was made, then click "No".

- Click "Yes" button. A popup window would show up (as shown in picture 4).



Picture 4

- The popup window will check out again if the user really wants to restore the password and will ask the user to enter "yes" and click "OK" button to confirm it. If the user doesn't want to restore password, then click "Cancel";
- The password of factory default setting is 111111 for MT8000/6000 series. After initialization process, the project files and data stored in the touch panel HMI will be completely erased.
- The upload and download password need to be reset in order to transfer project files correctly after initialization (as shown in picture 5).



Picture 5