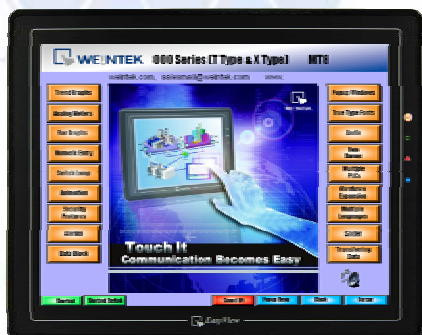


MT8150X

X86 CPU Core touch panel computer
with 15.0" XGA TFT display



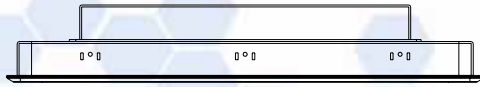
【 Introduction 】

MT8000 series is the new HMI generation of Weintek. With the design concept of meeting customers' satisfaction while easy-to-Use attribute as before, a MT8000 not only performs as a Human Machine Interface but also plays as a role of data exchange center. Through the most popular Ethernet connection, data can be shared among MT8000s without limitation and any SCADA/HMI software on the PC can simply access data from MT8000s. MT8000 series is the best choice for your requirement tomorrow.

【 Specifications 】

Hardware Specification	
Display	15.0" TFT
Brightness	350 cd/m ²
Color	65,536 colors
Contrast Ratio	550:1
Resolution (W x H dots)	1024 x 768
Back Light	CCFLx2
CCFL Life Time	50,000 hr.
Touch Panel	4 wires resistive type
Touch Accuracy	Active Area Length(X)±2%, Width(Y)±2%
Surface Hardness	4H
I/O port	COM1 (RS-232/RS-485 2W/4W), COM2(RS232), COM3(RS-232/RS-485 2W), 1 Ethernet port (10/100 Base-T)
USB Host	2 USB 2.0 Full Speed Host port
Audio	1 x Audio Line Out, 1 x MIC In
Processor	500MHz CPU
DRAM	256MB on board DDR-400MHz SDRAM
SD card slot	Support SDHC/SD
RTC	Built-in (CR2032 3V lithium battery backup.)
General Specification	
Input Power	24±10% VDC (21.6~26.4VDC) (Power Isolator Inside.)
Power Consumption	1.6 A@24VDC
CE/FCC	Complies with EN 55022:2006, Class A, EN 61000-3-2:2006, EN 61000-3-3:1995+A1:2001+A2:2005
Voltage Resistance	500VAC (1 min.)
Isolation Resistance	Exceed 50Ω at 500VDC
Vibration Endurance	10 to 25 Hz (X,Y,Z direction 2G 30mins)
Protection Structure	IP65 front panel (O ring seal)
Storage temperature	-20° ~ 60°C (-4° ~ 140°F)
Operating Temperature	0°~45°C (32° ~ 113°F)
Operation Humidity	10-90% RH (non -condensing)
Enclosure	Aluminum
Dimensions WxHxD	366 x 293 x 55mm
Panel Cutout Dimensions	352 x 279 mm
Weight	Approx. 2.9 kg
Operating System	
Operating System	EB8000 V1.3.0 or Newer

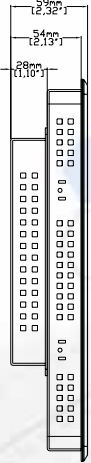
Dimensions of MT-8150X



Top View

Ordering Information

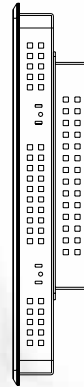
- O-ring
- Two-sided adhesive O-ring



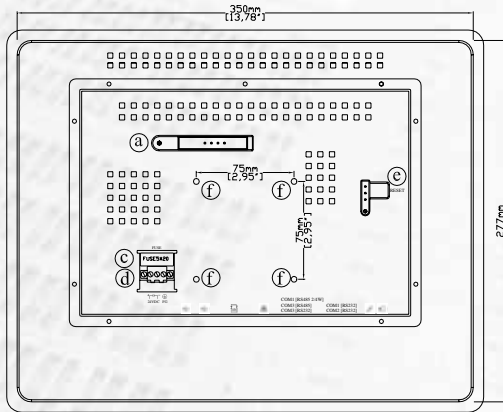
Side View



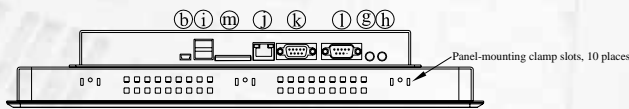
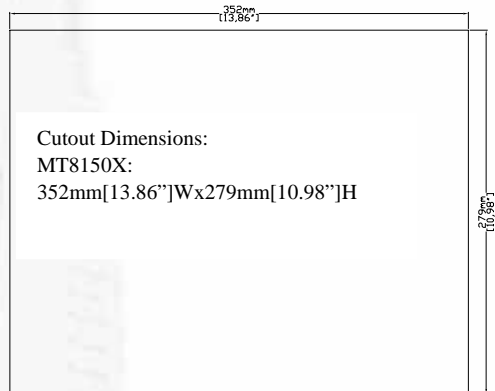
Front View



Side View



Rear View



Bottom View

a	IDE interface (DOM slot)	h	Line Out
b	Mini USB	i	USB Host port x 2
c	Fuse	j	Ethernet port 10/100 Base-T
d	Power connector	k	Com1 RS485, Com3 RS485, Com3 RS232
e	Reset button	l	Com1 RS232, Com2 RS232
f	VESA 75mm screw holes	m	SD CARD SLOT
g	Mic In		