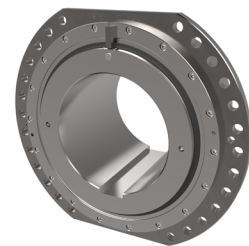
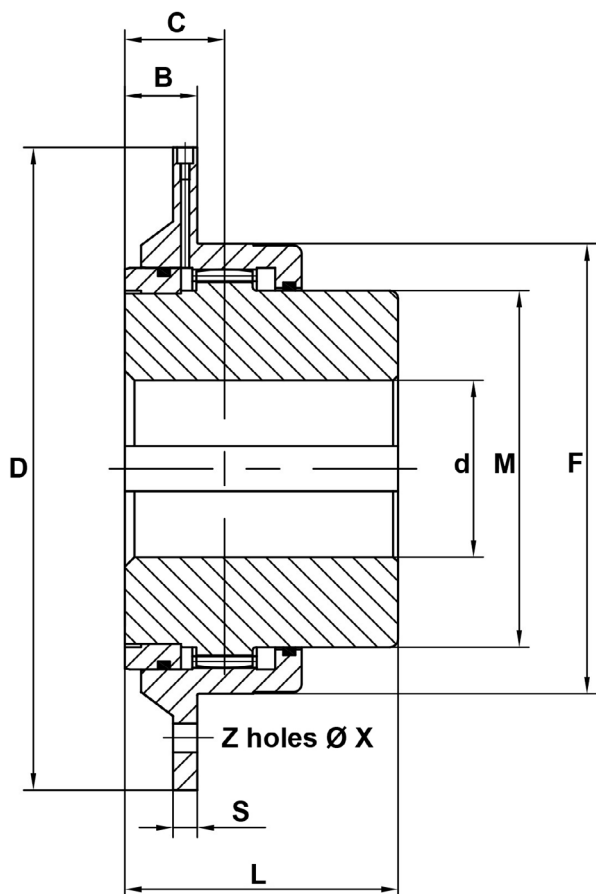




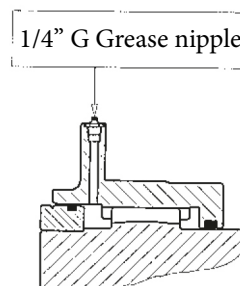
Sure to be Safe

Gear Drum Coupling
SDC



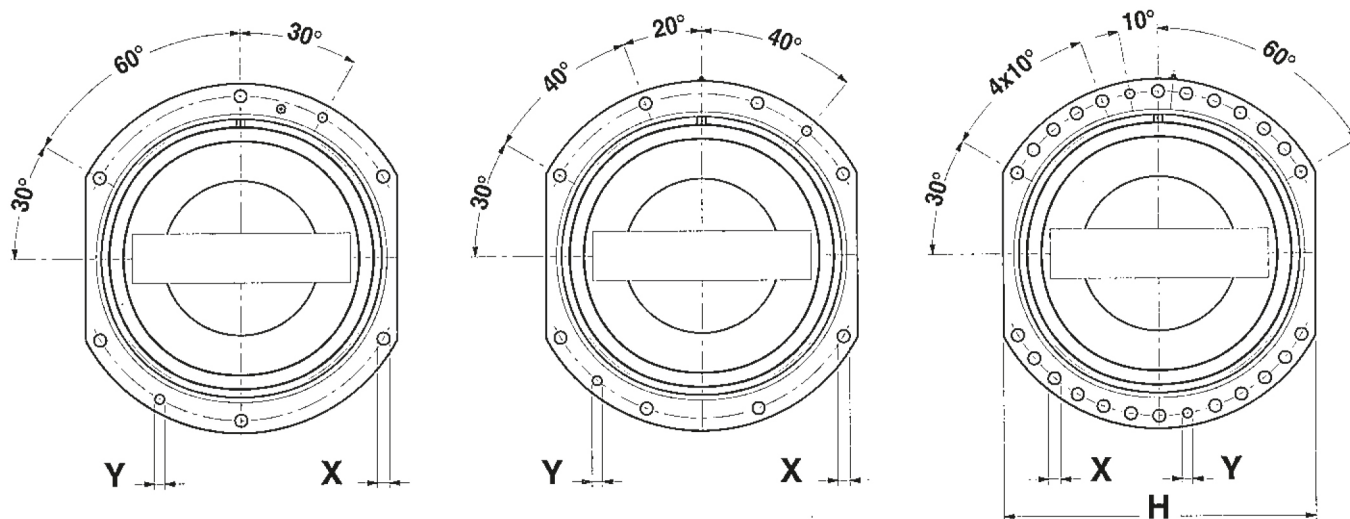


Size	NOMINAL TORQUE (kNm) Tk	MAX TORQUE (kNm) Tf	MAX LOAD (kNm) Qk	MAX --- (mm) d	MASS (1) M (Kg)	GREASE QUANTITY (Kg)
20	21.5	32.3	367	100	28	0.15
22	26.7	40.1	413	110	36	0.17
24	32.5	48.8	460	120	44	0.18
26	44.5	66.8	560	130	53	0.20
28	58.5	87.8	688	150	73	0.26
31	79.0	119	846	165	96	0.28
34	93.0	140	1152	175	120	0.32
40	139	209	1488	210	158	0.48
42	158	237	1631	220	223	0.58
45	196	294	1855	245	284	0.70
53	305	458	2293,5	290	466	1.10
56	362	543	2589	305	574	1.40
60	450	675	2997	330	718	1.80
67	568	852	3649	375	956	2.20
73	685	1028	4281	410	1230	2.60



Size	DIMENSIONS (MM)										
	D	Z	X	Y	B	S	C	L	M	f8-H7 F	h9-F8 H
20	320	6	18	M16	45	15	53	110	149	200	280
22	340	6	18	M16	45	15	55	125	165	220	300
24	360	6	18	M16	45	15	55	130	184	240	320
26	380	6	18	M16	45	15	57	145	196	260	340
28	400	6	18	M16	45	15	62	170	222	280	360
31	420	6	18	M16	45	15	62	175	253	310	380
34	450	6	23	M20	60	20	77	185	266	340	400
40	510	6	23	M20	60	20	77	220	317	400	460
42	550	6	23	M20	60	20	82	240	330	420	500
45	580	8	23	M20	60	20	87	260	368	450	530
53	650	8	23	M20	65	25	97	315	435	530	580
56	680	24	23	M20	65	25	107	350	460	560	600
60	710	24	28	M24	81	35	123	380	500	600	640
67	780	24	28	M24	81	35	123	410	560	670	700
73	850	24	28	M24	81	35	123	450	610	730	760

NOTE (1) - Values are calculated for solid hubs.



Max Theoretic Total Working life (h)	400	800	1600	3200	6300	12500	25000	50000
SAFETY CLASS (UNI 7670)	1 mC	1 mB	1 mA	2 m	3 m	4 m	5 m	5 m
SERVICE FACTOR FS	1.00	1.12	1.25	1.40	1.60	1.80	2.00	2.50

GEAR COUPLING SELECTION

LOAD DATA:	T_n = MAX TORQUE ON THE DRUM	(kNm)
	Q = MAX RADIAL LOAD ON THE GEAR COUPLING	(kNm)
	D = SHAFT DIAMETER	(mm)
	FS = SERVICE FACTOR	(-)
VERIFY THAT:	GEAR COUPLING NOMINAL TORQUE	T_k (kNm) ≥ T_n x FS
	MAX GEAR COUPLING RADIAL TORQUE	Q_k (kg) ≥ Q
	MAX GEAR COUPLING BORE	d (mm) ≥ D

Warning:

1. Allowable max angular misalignment is +/- 0°30' for the coupling.
2. Threads for lubrication holes Rc 1/4.
3. Inertial moment **I** and mass **M** are approximate value and be used for reference only.
4. Information in this document, adaption to new standards or new scientific knowledge, is subject to change without notice.
5. SDC gear drum coupling can be customized.

SIBRE Brakes
Scandinavia

SIBRE Brakes
Malaga, Spain

SIBRE Holding
Haiger, Germany
SIBRE Siegerland Bremsen
Haiger, Germany
SIBRE Production
Haiger, Germany
SIBRE LAC
Eschenburg, Germany

Mericom SIBRE
Beijing, China

SIBRE Brakes
Villanuova, Italy

SIBRE Brakes
Tianjin, China

SIBRE Brakes
Millville, USA

SIBRE Brakes
Kolkata, India

SIBRE Brakes
SEA

SIBRE Italia s.r.l.

Via Fibbia 1 • I-25080 Villanuova sul Clisi Bs
phone +39 0365 63699 • fax +39 0365 556062
mail info@sibre.it • home www.sibre.it



Siegerland Bremsen