

Limit switches

Our limit switches offer a broad range for even the most demanding applications, e.g. conveyor systems.



AZH

Main characteristics:

- Compact and highly reliable with excellent environment-proof capabilities
- Gold-clad contacts for low level types
- Miniaturised design
- Metal body or plastic body available
- IP67 / IP64

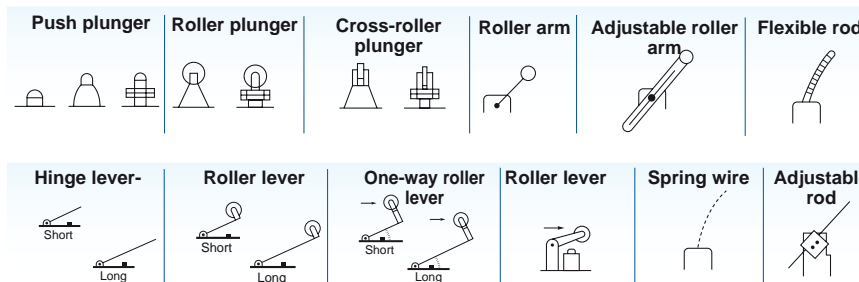


AZ7

Main characteristics:

- Compact design
- High load capability
- Economic
- Low weight
- IP64
- Dust proof and oil resistant

Actuators



(see detailed in catalog)



AZC1 (Magnetlimit)

Main characteristics:

- Available with normally open or normally closed contact
- Holding force up to 5kg
- Available in three colors



AZD

Main characteristics:

- Can be forced open, even if the contact is welded
- According to IP67
- Dimensions conform to DIN EN 50047
- Wide operating temperature range



AZ8

Main characteristics:

- The terminal area can be fully opened for easy wiring
- Compact design
- High load reliability
- Easy wiring
- IP60 / IP64
- Oil tight
- Actuator heads are turnable in 90° steps



For detailed information, please refer to the main catalogs or www.panasonic-electric-works.com

Temperature controllers

Get every temperature exactly to the point – with our wide temperature controller range. Six different models, universal access (thermocouples, RTD, DC voltage, DC current), various output types (relays, non-contact voltage and current) and user-friendly handling characterise the KT series.



KT2

Main characteristics:

- Multi-input: versatile thermocouple, RTD, DC current, DC voltage
- Alarm output with 9 different operation modes
- Control modes: PID, on/off control, Anti-Reset-Windup (ARW)

KT4

Main characteristics:

- Multi-input: versatile thermocouple, RTD, DC current, DC voltage
- Alarm output with 9 different operation modes
- Control modes: PID, on/off control, Anti-Reset-Windup (ARW)

KT7

Main characteristics:

- Multi-input: versatile thermocouple, RTD, DC current, DC voltage
- Alarm output with 9 different operation modes
- Control modes: PID, on/off control, Anti-Reset-Windup (ARW)
- Heater-burn-out alarm available
- Alarm output with 9 different operation modes
- RS485 ASCII/Modbus communication available
- Supply voltage: 24VAC/DC or 100 to 240VAC

KT8

Main characteristics:

- Multi-input: versatile thermocouple, RTD, DC current, DC voltage
- Alarm output with 9 different operation modes
- Control modes: PID, on/off control, Anti-Reset-Windup (ARW)
- Heater-burn-out alarm available
- Alarm output with 9 different operation modes
- RS485 ASCII/Modbus communication available
- Supply voltage: 24VAC/DC or 100 to 240VAC

KT9

Main characteristics:

- Multi-input: versatile thermocouple, RTD, DC current, DC voltage
- Alarm output with 9 different operation modes
- Control modes: PID, on/off control, Anti-Reset-Windup (ARW)
- Heater-burn-out alarm available
- Alarm output with 9 different operation modes
- RS485 ASCII/Modbus communication available
- Supply voltage: 24VAC/DC or 100 to 240VAC



Small size
High performance

KT4H/KT4B

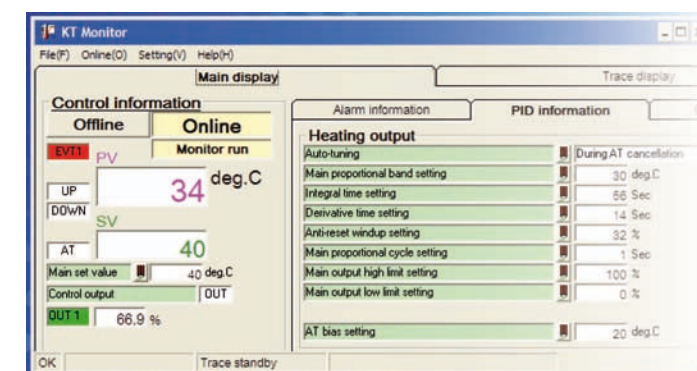
Main characteristics:

- 11-segment display with 3 colors for PV
- 4 set values (externally selectable)
- Tool port as standard
- MEWTOCOL communication

KT Monitor - Software for KT4H/KT4B



Ordering information:
KT Monitor Set (CD with software, manuals, tool port cable AKT4H820)



For detailed information, please refer to the main catalogs or www.panasonic-electric-works.com

Eco POWER METERS



Electric power data collection and remote watching of plants and buildings

Electric power watching using Web Datalogger Unit with Eco POWER METER

Electric power watching using PLC with Eco POWER METER

Electric power watching in manufacturing

KW1M

- Screw and DIN-rail installation possible
- Integrated RS485 interface (Modbus RTU/MEWTOCOL)
- Automatic logging of measurement data at numerous selectable intervals (can be saved on SD card)
- Diverse alarm functions, e.g. when current consumption levels are exceeded
- Calendar function

- Suited for measuring 3-phase currents of up to 400VAC
- Monitors and displays the most important electrical parameters
- Display of calculated CO₂ use
- Integrated pulse counter and hour meter
- Pulse output
- Free software that allows you to display the most important measurement values

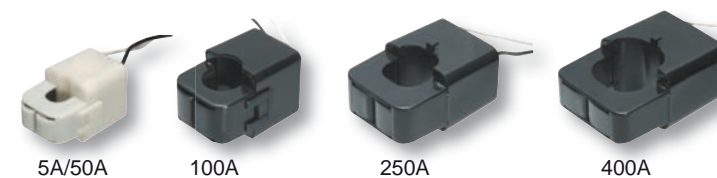
High voltage input



KW8M

Main characteristics:

- High voltage input type for direct measurement of 400V loads
- Three-phase, four-wire system compatibility
- Data log function (AKW8111H)
- NEW: Direct input for secondary side of 1A/5A CT (AKW8115)
- Dedicated CTs are no longer required
- Integrated counter & hour meter function
- Up to 99 Eco-POWER METERS can be connected to one master PLC
- Network compatibility: Modbus, RS485, MEWTOCOL (Panasonic proprietary network protocol)



Dedicated current transformer (CT)

CT is not included with the product.



Fig. 3

For detailed information, please refer to the main catalogs or www.panasonic-electric-works.com

AC & DC fan motors

Panasonic fan motors in seven different sizes, various operating voltages and rotation speeds leave no wishes unfulfilled. So be cool and stay cool.



ASFN series (DC fan motors)

Main characteristics:

- Rated operating voltages: 5V DC, 12V DC, 24V DC, (48VDC – ASFN1*B** series only)
- Different rotation speeds per model
- Fan blockage protection
- Reverse polarity, overvoltage protection
- Frame: plastic
- Long lifetime
- Quiet operation
- Quiet operation
- Optionally available with lock sensor output (alarm in case fan is blocked)

Dimensions:
40 x 40 x 10mm
60 x 60 x 25mm
80 x 80 x 25mm
92 x 92 x 25mm
120 x 120 x 25mm
120 x 120 x 38mm
150 x 172 x 38mm

ASEN series (AC fan motors)

Main characteristics:

- Rated operating voltages: 100, 115, 200, 220, 230, 240VAC
- Universal 50 / 60Hz applications
- Three rotation speeds per model
- Frame: aluminium alloy die-casting
- Long lifetime
- Quiet operation
- Optional: connect via cable (length 300mm) or "Faston" connector

Dimensions:
60 x 60 x 30mm
80 x 80 x 25mm
80 x 80 x 38mm
92 x 92 x 25mm
120 x 120 x 25mm
120 x 120 x 38mm
150 x 172 x 38mm

KR20 wireless unit

Main characteristics:

- Lightning-fast, high-security 2.4GHz transmission
- Effortless network integration with a variety of terminal station devices
- 6 digital I/Os available for the PNP I/O unit, 8 I/Os for the NPN I/O unit
- Simple, fast configuration of complex wireless networks
- Via RS485, up to 99 KR20 slaves can be connected to each master, and 31 terminal stations can be connected to a single master. In total, 254 terminal stations can be connected to a single master.
- Wiring expenses practically eliminated
- Range extension through repeater function
- Parametrization via integrated, easy-to-use Configurator KR software
- KR20 Accessories
 - Antenna
 - Antenna with cable
 - Antenna extension cable

Panasonic FA components:
LONG-LIFE QUALITY

As with all Panasonic products, the FA components undergo extremely rigorous testing during development that far exceeds the demands that will actually be placed on them. This is a guarantee for the long life of the product in the application.



For detailed information, please refer to the main catalogs or www.panasonic-electric-works.com

Counters & hour meters

Panasonic counters are flexible, reliable and providential. Different models allow application in various areas. Outstanding quality you can count on.



Prescale function

with a changeable panel cover

LC4H/LC4H-S/LC4H-W

Main characteristics:

- Operating modes: 5 input modes
- LC4H-W: Independent 2 inputs Two-stage presetting (upper and lower limits) 2 outputs
- LC4H-S: with scale factor & 12VDC power supply, to connect photo-sensors, proximity switches or encoders
- Bright, easy-to-read and 2-color LCD display
- Seesaw buttons
- 4- or 6-digit display
- Dimensions: 48 x 48 x 64.5mm / 48 x 48 x 70.1mm



DIN half-size counters

Switchable 2-color (red/green) backlight

LC2H/LC2H preset type

Main characteristics:

- Operation modes: addition with or without reset
- Operating voltage: built-in battery or 3VDC
- Input signals: non-voltage, DC voltage, free voltage
- LC2H preset: Addition / Subtraction
- 8-digit easy-to-read display
- 8.7mm character height
- With reset
- Preset value setting
- Operating voltage: 24VDC
- Input signals: non-voltage or open collector
- Changeable panel cover

Use Panasonic's ruggedly designed hour meters to record operating hours, keep costs transparent and ensure that service intervals are met.

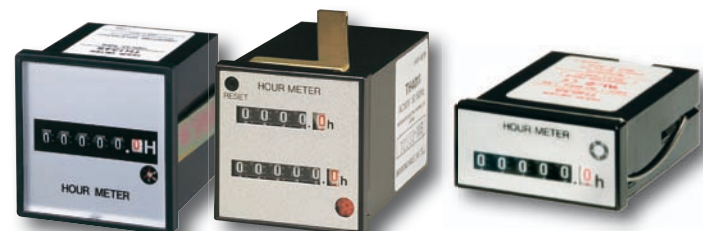


Switchable background

LH2H/LH2H preset type

Main characteristics:

- LH2 H: Operation voltage: built-in battery; 4.5VDC – 30VDC, 24VAC – 240VAC
- Output: no output
- Reset: yes / no
- Battery life: 10 years
- LH2H preset: Operation voltage: 24VDC
- DIN half-size
- Switchable time range & switchable 2-color (red/green) backlight
- 8.7mm character height
- Changeable panel cover
- Transistor output: 100mA, 30VDC, PNP/NPN
- Reset: yes



TH1/TH2/TH4/TH5/TH6

Main characteristics:

- Various operation voltages: 12VAC–240VAC
- Output: no output
- Reset: yes / no
- Display: 5 or 6 digits
- Quick and easy to install



Waterproof IP66

Round shape

TH8

Main characteristics:

- Operation voltage: 12VDC and 24VDC
- Display: 5 digits
- Dimensions: 62mm ø x 87.5mm

Global Network

Panasonic
ideas for life

OVERVIEW

AUTOMATION COMPONENTS

North America	Europe	Asia Pacific	China	Japan
---------------	--------	--------------	-------	-------

Panasonic Electric Works

Please contact our Global Sales Companies in:

Europe		
► Headquarters	Panasonic Electric Works Europe AG	Rudolf-Diesel-Ring 2, 83607 Holzkirchen, Tel. +49 (0) 8024 648-0, Fax +49 (0) 8024 648-111, www.panasonic-electric-works.com
► Austria	Panasonic Electric Works Austria GmbH	Josef Madersperger Str. 2, 2362 Biedermannsdorf, Tel. +43 (0) 2236-26846, Fax +43 (0) 2236-46133
		www.panasonic-electric-works.at
► Benelux	PEW Electronic Materials Europe GmbH	Ennshafenstraße 30, 4470 Enns, Tel. +43 (0) 7223 883, Fax +43 (0) 7223 88333, www.panasonic-electronic-materials.com
	Panasonic Electric Works	De Rijn 4, (Postbus 211), 5684 PJ Best, (5680 AE Best), Netherlands, Tel. +31 (0) 499 372727, Fax +31 (0) 499 372185,
	Sales Western Europe B.V.	www.panasonic-electric-works.nl
► Czech Republic	Panasonic Electric Works Czech s.r.o.	Průmyslová 1, 34815 Planá, Tel. (+420-374 799 990, Fax (+420-374 799 999, www.panasonic-electric-works.cz
► France	Panasonic Electric Works	Succursale française, 10, rue des petits ruisseaux, 91370 Verrières Le Buisson, Tél. +33 (0) 1 6013 5757, Fax +33 (0) 1 6013 5758,
	Sales Western Europe B.V.	www.panasonic-electric-works.fr
► Germany	Panasonic Electric Works Europe AG	Rudolf-Diesel-Ring 2, 83607 Holzkirchen, Tel. +49 (0) 8024 648-0, Fax +49 (0) 8024 648-111, www.panasonic-electric-works.de
► Hungary	Panasonic Electric Works Europe AG	Erdőfalja út 91/a, 1037 Budapest, Tel. +36 (0) 20 9715688, www.panasonic-electric-works.hu
► Ireland	Panasonic Electric Works UK Ltd.	Irish Branch Office, Dublin, Tel. +353 (0) 14600969, Fax +353 (0) 14601131, www.panasonic-electric-works.co.uk
► Italy	Panasonic Electric Works Italia srl	Via del Commercio 3-5 (Z.I. Ferina), 37012 Bussolengo (VR), Tel. +39 (0) 456752711, Fax +39 (0) 456700444,
		www.panasonic-electric-works.it
► Nordic Countries	Panasonic Electric Works Nordic AB	Sjögångsvägen 10, 19272 Sollentuna, Sweden, Tel. +46 859476680, Fax +46 859476690, www.panasonic-electric-works.se
		Jungmansgatan 12, 21119 Malmö, Tel. +46 40 697 7000, Fax +46 40 697 7099, www.panasonic-fire-security.com
► Poland	Panasonic Electric Works Polska sp. z o.o.	ul. Woloska 9A, 02-583 Warszawa, Tel. +48 (0) 22 338-11-33, Fax +48 (0) 22 338-12-00, www.panasonic-electric-works.pl
► Portugal	Panasonic Electric Works España S.A.	Portuguese Branch Office, Avda Adelino Amaro da Costa 728 R/C J, 2750-277 Cascais, Tel. +351 214812520, Fax +351 214812529
► Spain	Panasonic Electric Works España S.A.	Barajas Park, San Severo 20, 28042 Madrid, Tel. +34 913293875, Fax +34 913292976, www.panasonic-electric-works.es
► Switzerland	Panasonic Electric Works Schweiz AG	Grundstrasse 8, 6343 Rotkreuz, Tel. +41 (0) 41 7997050, Fax +41 (0) 41 7997055, www.panasonic-electric-works.ch
► United Kingdom	Panasonic Electric Works UK Ltd.	Sunrise Parkway, Linford Wood, Milton Keynes, MK14 6LF, Tel. +44 (0) 1908 231555, Fax +44 (0) 1908 231599,
		www.panasonic-electric-works.co.uk
North & South America		
► USA	PEW Corporation of America	629 Central Avenue, New Providence, N.J. 07974, Tel. 1-908-464-3550, Fax 1-908-464-8513, www.pewa.panasonic.com
Asia Pacific / China / Japan		
► China	Panasonic Electric Works (China) Co., Ltd.	Level 2, Tower W3, The Towers Oriental Plaza, No. 2, East Chang An Ave., Dong Cheng District, Beijing 100738, Tel. (010) 5925-5968, Fax (010) 5925-5973
		RM1205-9, 12/F, Tower 2, The Gateway, 25 Canton Road, Tsimshatsui, Kowloon, Hong Kong, Tel. (0852) 2956-3118, Fax (0852) 2956-0398
► Hong Kong	Panasonic Electric Works (Hong Kong) Co., Ltd.	
► Japan	Panasonic Electric Works Co., Ltd.	1048 Kadoma, Kadoma-shi, Osaka 571-8686, Japan, Tel. (06) 6908-1050, Fax (06) 6908-5781, http://panasonic-electric-works.net
► Singapore	Panasonic Electric Works Asia Pacific Pte. Ltd.	101 Thomson Road, #25-03/05, United Square, Singapore 307591, Tel. (06255) 5473, Fax (06253) 5689

Panasonic

Copyright © 2010 Printed in Germany
6087euen 11/2010

Digital & analog timers

Panasonic's digital and analog timers qualify particularly in precise and simple settings and control systems. The multivarious product range offers the right equipment for your needs at any time.



Changeable panel cover

2 independent timing functions

Easy wiring

Pin & built-in screw terminal type

LT4H/LT4H-W

Main characteristics:

- Operating voltage: 12VDC – 24VAC/DC, 100VAC – 240VAC
- Up to 8 operation types
- Configurable time range: 0.001s to 999.9h and 0.01s to 9999h
- On panel & socket mounting
- Easy-to-read
- 2-color LCD display
- LT4H-W → Twin: 2 Independent timing functions available simultaneously
- Dimensions: 48 x 48 x 65.5mm / 48 x 48 x 70mm

Time setting at power off

QM4H

Main characteristics:

- Operating voltage: 12VAC DC – 48VAC/DC, 100VAC/DC – 240VAC/DC
- Protection: IP40, with cover IP64
- Operation modes: Power ON delay
- Instantaneous contact
- 8 time ranges selectable 0.01s to 9990h
- QM4H-S with MODE switch
- QM4H-G with reset and stopsignal input
- Dimensions: 48 x 48 x 85.4mm, pin type



From April 1st 2009, Panasonic Electric Works Co., Ltd. expanded its warranty period for its FA automation control products from current 1 year to 3 years.

S1DXM

Main characteristics:

- Operating voltage: 12, 24VDC as well as 24V, 110 – 120V, 200 – 220V, 220 – 240VAC
- S1DXM-A: Power ON delay operation
- S1DXM-M: 4 operation modes
- 4 different time ranges: 0.05s to 10h
- Dimensions: 22.1 x 28.5 x 52.7mm
- Terminal: pin type / solder terminal
- Useable with HJ relay terminal socket

Multirange DIN rail analog timer

PM5S

Main characteristics:

- PM5S-A: 6 operation modes
- PM5S-M: 6 operation modes (with instantaneous contact)
- PM5S-S: Power ON delay
- Time range: 0.1s to 500h
- Dimensions: 75 x 22.5 x 98.5mm



For detailed information, please refer to the main catalogs or www.panasonic-electric-works.com

For detailed information, please refer to the main catalogs or www.panasonic-electric-works.com