

**M. K. Juchheim
GmbH & Co**
36035 Fulda, Germany
Phone (0661) 6003 - 0
Fax (0661) 6003 - 607
Telex 49 701 juf d
email JUMO_de@e-mail.com

**UK
Jumo Instrument Co. Ltd.**
Temple Bank, Riverway
Harlow, Essex CM20 2TT
Phone (01279) 63 55 33
Fax (01279) 63 52 62

**USA
Jumo Process Control Inc.**
735 Fox Chase
Coatesville, PA 19320
Phone 610 - 380 - 8002
800 - 554 JUMO
Fax 610 - 380 - 8009



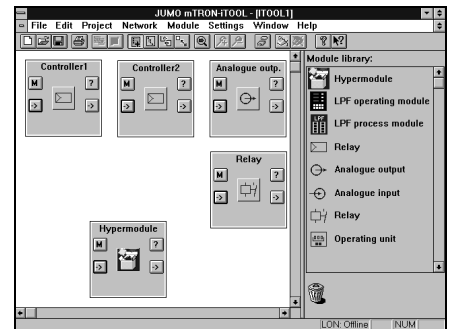
Project design software iTOOL



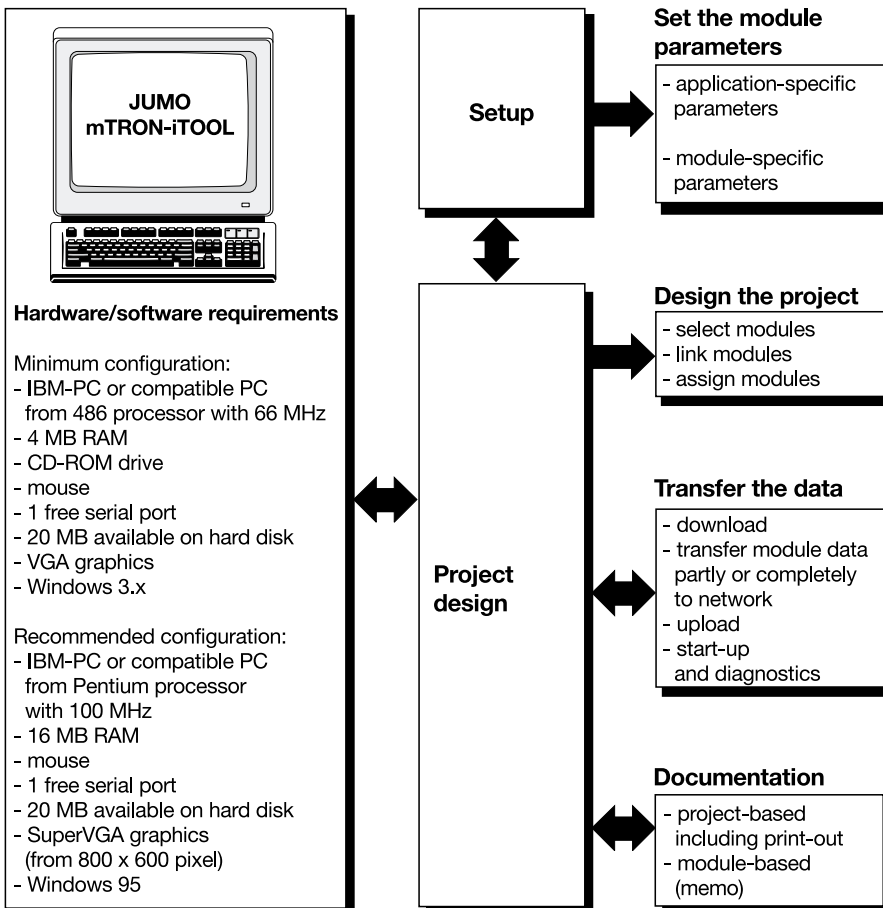
Brief description

JUMO mTRON automation systems can be designed graphically on the PC using the JUMO mTRON-iTOOL project design software. The menu and window arrangement of the program follows the usual Windows format. A module library containing the individual modules as graphic symbols can be called up at any time during project design. The modules required for the system project are taken from this library using Drag & Drop and can be placed freely on the working area. Any 16-character names can be assigned to the modules to provide a direct relationship with the real installation. The module carries a type-dependent symbol for quick visual recognition.

With this program the user is able to link instruments of the JUMO mTRON family, to set application-specific parameters with the aid of an embedded instrument-specific setup program, to load the completed project in the JUMO mTRON automation system, and to produce the documentation for the project. There is a choice of whether download or upload is to operate on all modules or only on selected ones. When the project design has been completed and the project is operating, values of network variables can be indicated online. This provides a direct check on the design of the real installation.



Block structure



Features

- **Project design**
The modules are selected, links between them are defined through network variables and assigned to the modules in the system.
- **Download (upload)**
The data can be loaded into the system, either individually or for the entire project.
- **Modem**
Download/upload via modem for remote servicing is available.
- **NV monitor**
Any network variables can be monitored on-line.
- **Drag & Drop**
Quick and intuitive working through Drag & Drop.
- **Off-line operation**
A project can be edited without any connection to the network. The assignment between the modules in JUMO mTRON-iTOOL and the modules in the system can be made later, either manually or automatically in on-line operation
- **Project documentation**
The entire project as well as each individual module (memo) can be documented.

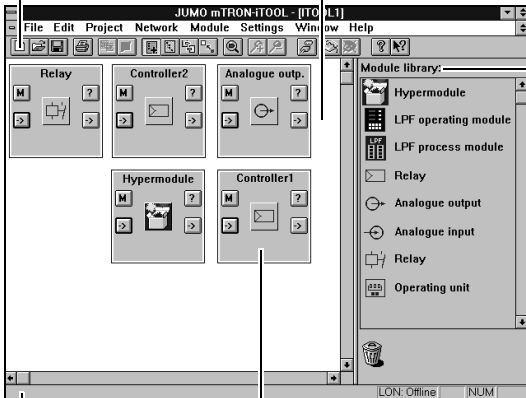
The JUMO mTRON-iTOOL project design software

Tool bar

Important functions can be called up directly by mouse click using the icons in this bar

Project window

In the project window the modules are shown on the working area as individual graphic objects (module windows).



View mode

The project is managed through different view modes. Module selection, for example, takes place through Drag & Drop from the *module library* to the working area.

Module window

The elements of the module window are used to call up the lists of input/output network variables, the setup program, the module-specific online help, and the memo (documentation). There is a free choice of module name (up to 16 characters).

Status bar

Brief reference texts are shown in the status bar. JUMO mTRON-iTOOL and the setup program have additional extensive online help functions.

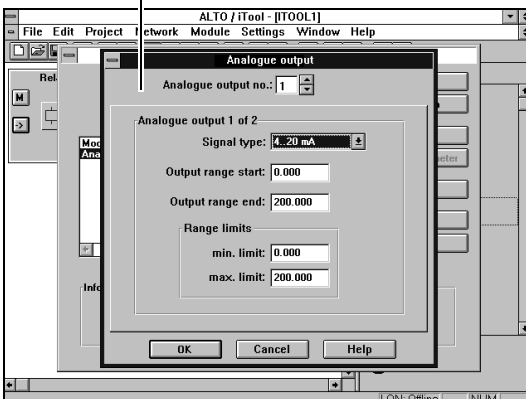
The setup programs

They are bound directly into the JUMO mTRON-iTOOL and are called up by a double click on the module icon in the module window.

There is a separate setup program for each module to ensure clear setting of the module parameters.

Setup dialogue (Analogue output)

The parameters of the individual module functions are set clearly through module-specific dialogues (windows).



Training/seminars

Special training sessions and seminars on JUMO mTRON-iTOOL are provided at our Training Centre.

Details concerning available training sessions and dates are available from local JUMO offices and subsidiaries. The addresses of our head office in Fulda and of our offices in the UK and the USA are given in the heading of this Data Sheet.

Standard accessory

System Manual JUMO mTRON; useful tool for configuration, parameter setting and operation of the modules

Accessory

PC interface with TTL/RS232C converter
for connecting the module to a PC, length 2m.
Sales No. 70/00301315

JUMO mTRON modules summary

Controller module
Data Sheet 70.4010

Relay module
Data Sheet 70.4015

Analogue input module
Data Sheet 70.4020

Analogue output module
Data Sheet 70.4025

Logic module
Data Sheet 70.4030

Operating unit
Data Sheet 70.4035

Communication module
Data Sheet 70.4040

Project design software
JUMO mTRON-iTOOL
Data Sheet 70.4090