

Product Information

INLINE Low Flow Fittings S030

Version 06/00



Triembach *Customized Systems Solutions* Department has received many inquiries concerning *INLINE* fittings with nominal diameters smaller than DN15.

Some fittings *INLINE* S030 DN6 or DN8 (with given technical limitations) were successfully launched.

The aim of this Product Information is to widen the information and to allow you to achieve new applications which were so far out of our *INLINE* fittings ranges.



Content	Page
1. What is an <i>INLINE</i> Low Flow Fitting ?	2
2. Typical applications	2
3. Area of applications and limitations	2
4. Additional information and documentation	5

1. What is an *INLINE* Low Flow Fitting ??

Fittings *INLINE* DN6 or DN8, made from brass or stainless steel, on which sensors type SE30, SE32, SE34 and SE35 can be set thanks to the quarter-turn connection.

2. Typical applications

- Brass fitting DN6 is successfully sold for laser beam cutting machines (BC-CH – 30 pces per month since 1998).
- Brass fitting DN8 is successfully sold for aluminium profiling machines (BC-USA – 50 pces per month).
- Stainless steel fitting DN8 was successfully sold for testing stands (BC-CDN – one batch of 100 pces in January 2000).

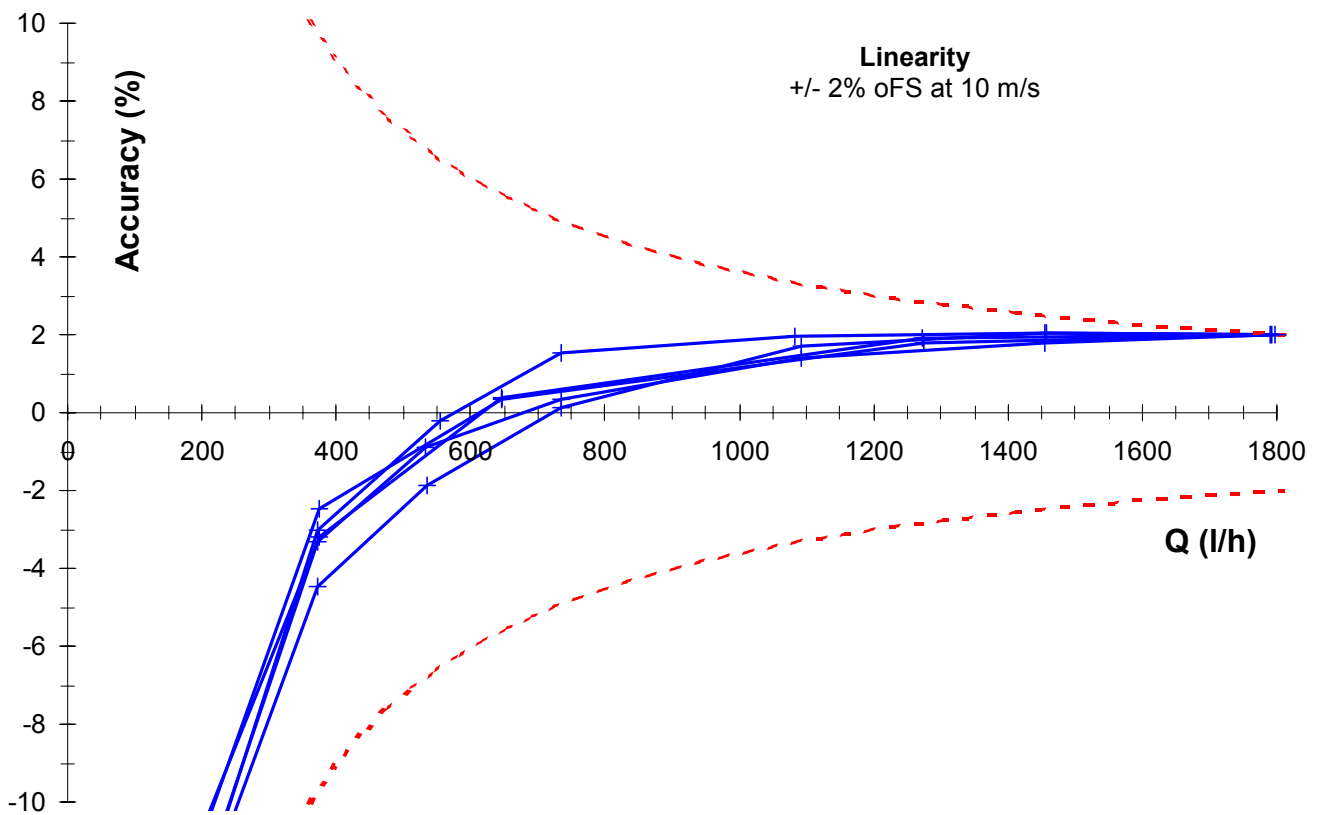
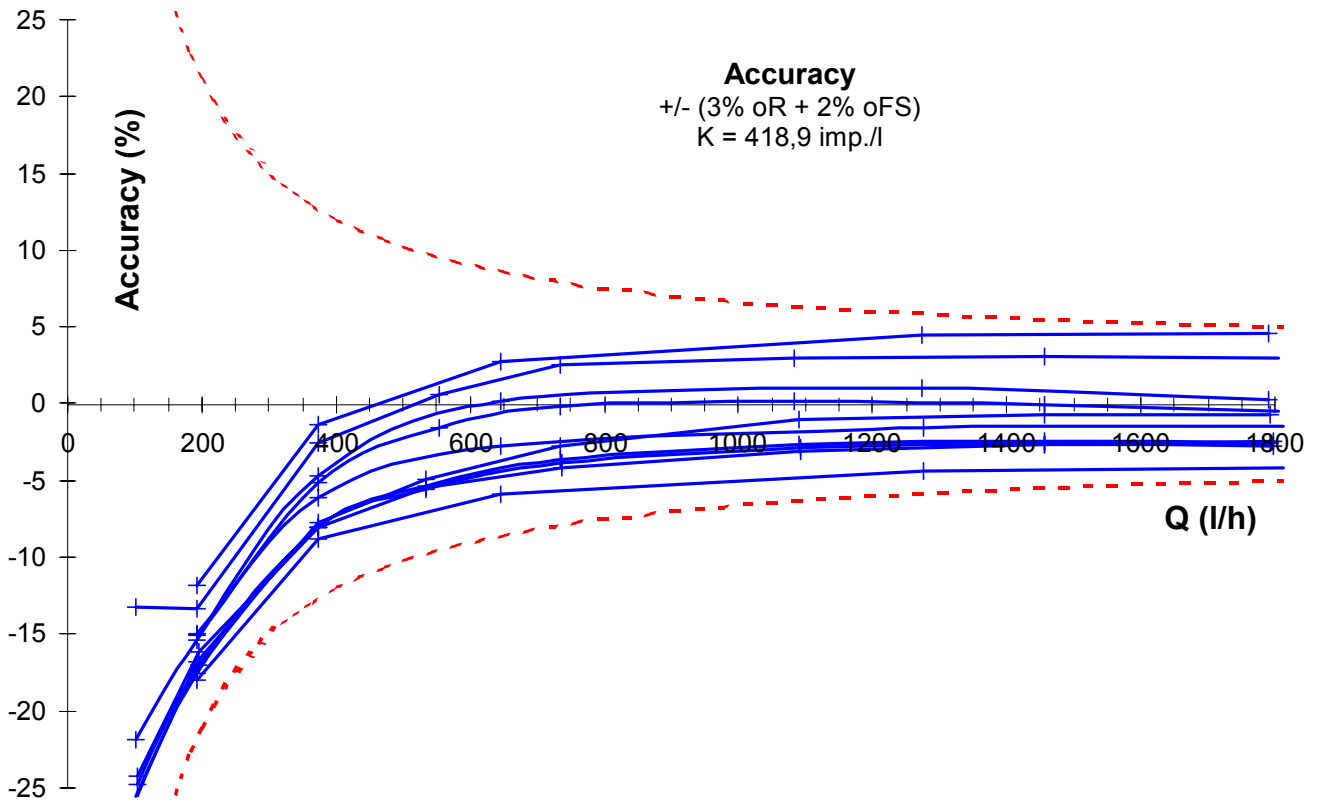
3. Area of applications and limitations

- DN6 – brass:
60 to 1000 l/h K = 630,5 pulses / liter
- DN8 – brass:
120 to 1800 l/h K = 418,9 pulses / liter
- DN8 – stainless steel:
120 to 1800 l/h K = 378,6 pulses / liter
- Media: viscosity as standard S030
- Accuracy : +/- (3% oR + 2% oFS)

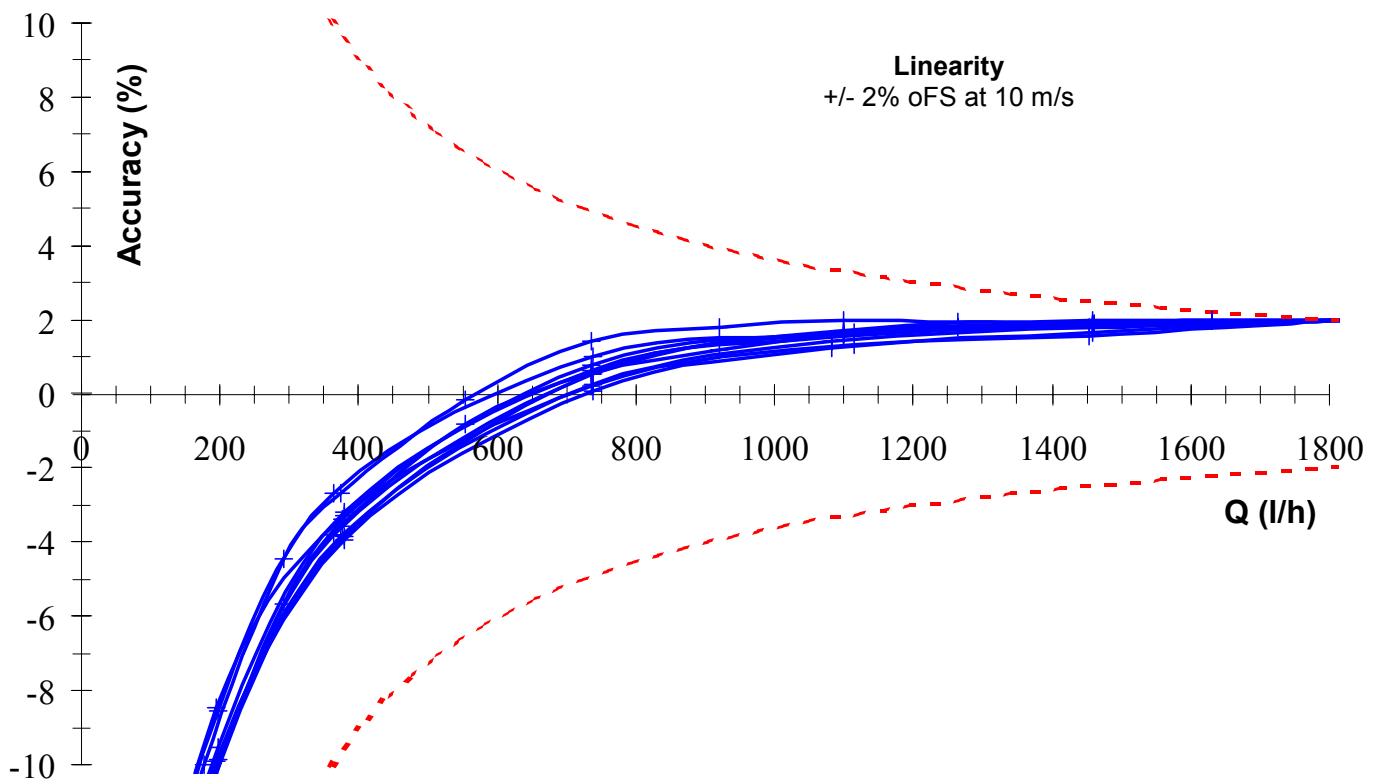
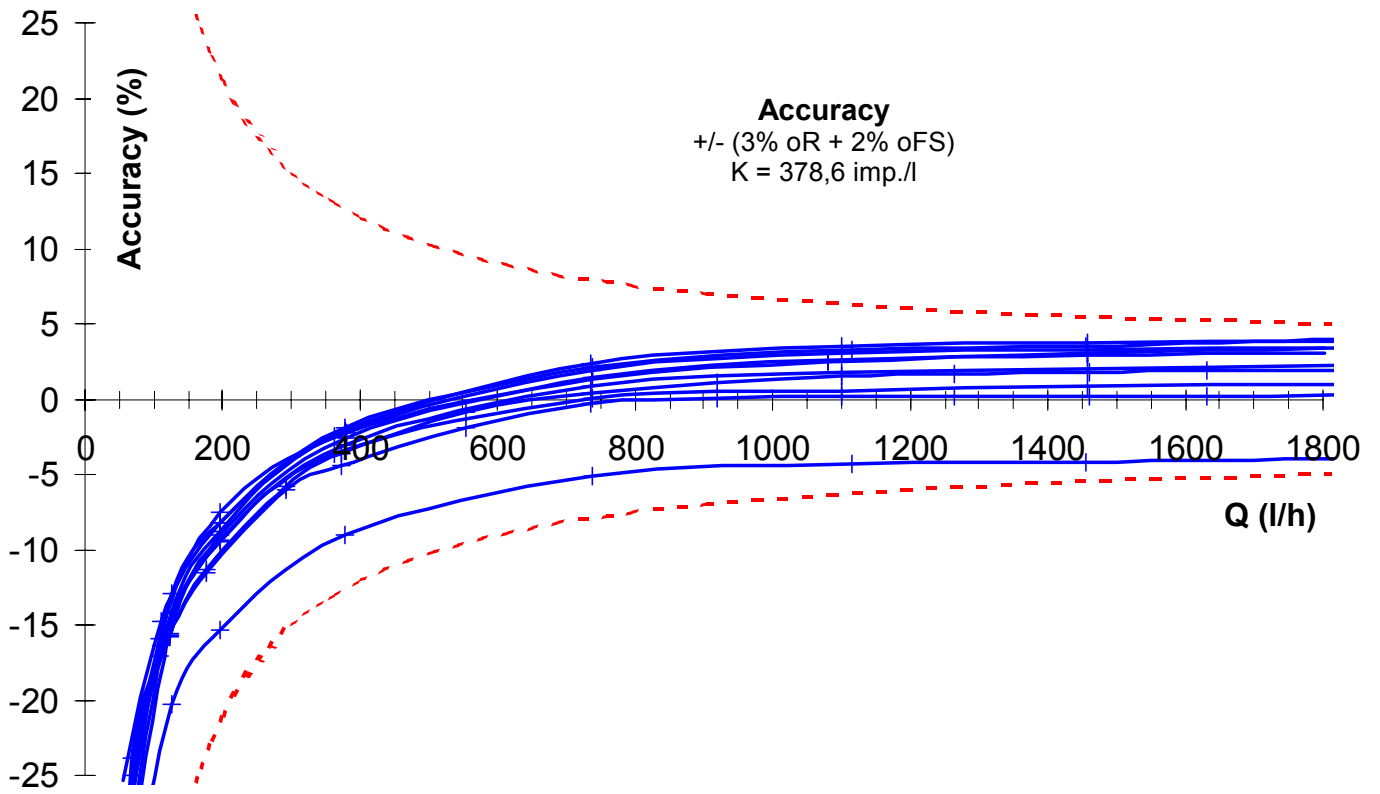
Please, take in consideration that Bürkert standard *INLINE* fittings achieve +/- (2,5% oR + 0,5% oFS). This means that these fittings DN6 and DN8 should only be used on processes on which these features are acceptable.

We are currently working to optimize these fittings, and also to issue PVC, PP and PVDF ones.

DN8 – brass:

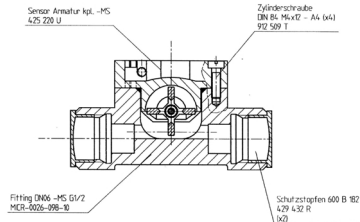


DN8 – stainless steel:

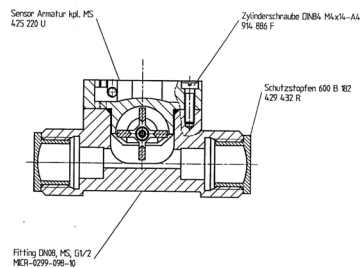


4. Additional information and documentation

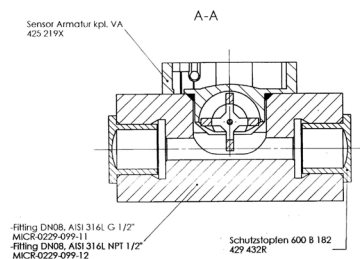
- DN6 – brass:
 Ident.: 430 328 D
 Ordering key: SYST-S030-430328D-SP076/98
 Connection: G1/2
 Length: 84 mm
 Machined: from S030 DN15 cast part



- DN8 – brass:
 Ident.: 433 866 Q
 Ordering key: SYST-S030-433866Q-SP299/98
 Connection: G1/2
 Length: 84 mm
 Machined: from S030 DN15 cast part



- DN8 – stainless steel:
 Ident.: 439 410 Z
 Ordering key: SYST-S030-439410Z-SP229/99
 Connection: NPT1/2
 Length: 90 mm
 Machined: from a SS block 40 x 40 x 90 mm



→ Other process connections on request !