

2/2 Way, 3/2 Way Valve, 32 mm



Advantages / Benefits

- ▶ Complete isolation of valve and fluid
- ▶ Maintenance-free
- ▶ Easy replacement of silicone tubes
- ▶ Low power consumption
- ▶ Compact design

Design

The direct-acting solenoid valve is available in 2-way and 3-way version.

The valve is completely isolated from the fluid.

The tube can be fitted to provide 2 or 3 way circuit function when the valve is operated.

The solenoid epoxy encapsulation efficiently dissipates the heat generated by the coil.

- body material black anodized aluminium

- silicone tube \varnothing 6/3 mm

- fast-acting

- fitted with manual override

Applications

Shut-off, dosing, filling and venting

Neutral gases and liquids

Pneumatic control

Small devices, laboratory and measuring technology

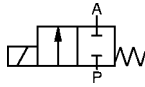
Analytical devices

Medical instruments

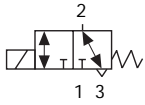
Technical Data

Circuit Function

A 2/2-way valve,
normally closed



T 3/2-way valve,
for general use



Body Material

Black anodized aluminium

Specifications

Tube Material	Tube Dimensions*	Pressure Range	Weight
	[mm]	[bar]	[kg]
Silicone ¹⁾	6 x 3	0-1	0.3

¹⁾ 55±5 shore A, E2 DIN 7715 tolerance
*other tube dimensions on request

All pressures quoted are gauge pressures with respect to the prevailing atmospheric pressure.

Operating Data (Valve)

Seal Material / Fluids Handled/ Temp.-Range

Silicone neutral gases 0 to +90 °C
and liquids

Max. ambient temperature +55 °C

Response times AC: 10-20 ms,
DC: 20-80 ms

Operating Data (Actuator)

Operating voltages 24/= (24 V/50 Hz, 42 V/50 Hz, 50 Hz on request)¹⁾

Voltage tolerance ±10 %

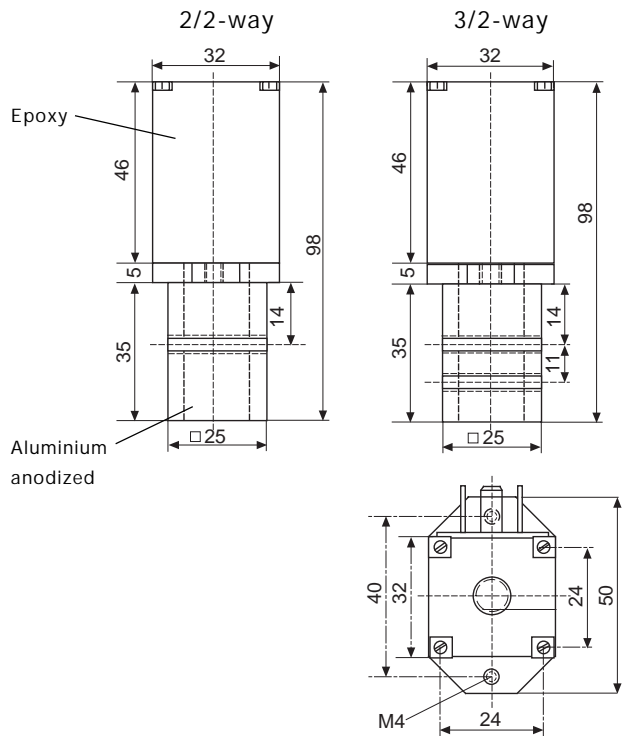
Power consumption AC 21 VA (inrush), 12 VA/8 W (hold)
DC 8 W

Duty cycle 100% continuously rated

Electrical connection cable plug for 7 mm Ø cable

Rating IP 65

Dimensions [mm]



Ordering Data

Specification	Item-No.
QHSQ-A-06,0-SIL-ALU-024/=F000	CH07053
QHSQ-T-06,0-SIL-ALU-024/=F000	CH07054

¹⁾ other voltages on request

In case of special requirements, please consult for advice. We reserve the right to make technical changes without notice. 902-GB/ 1-184