

PI-Controller; PA-plug housing acc. to DIN 43650 A; 24 VDC



Advantages / Benefits

- ▶ Ready-to-use automation module
- ▶ 80% less planning and installation costs
- ▶ On-the-spot easy installation, configuration and operation
- ▶ Fixed and variable set-points
- ▶ Controller fully functional without removable control-unit
- ▶ **CE** conform

Design/Function

The electronic PI-controller is integrated in a polyamid plug housing acc. to DIN 43 650 A to be plugged directly on a continuous control valve (i.e. Burkert types 6022, 6023, 6223).

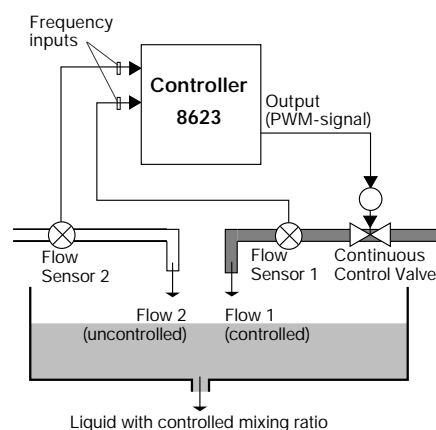
It comprises two basic elements: the microprocessor controlled self-supporting and programmable controller and the removable control unit type 1077-5, which can be utilized for more than one controller.

The controller can be used to control flow and mixing-ratios of liquids. Two frequency-analog inputs for flow sensors (i.e. Burkert flow sensor types 8020 and 8030) are available to be compared with a process set-point, which can be preset internally through push buttons or externally through a standard signal.

The removable control-unit has a display and two push buttons for:

- setting the control parameters
- configuring the set-point
- setting the K-factor
- monitoring the control values

Application example: Control of mixing ratio
(Flow 1 = mixing ratio x Flow 2)



Applications

- Control of supply of liquids in chemical process engineering
- Control of flow in water cooling circuits in machines and plants
- Control of mixing ratios of liquids
- Control of liquid supply in water treatment
- Control of damping in paper and textile machineries
- Control of flow in batch machines

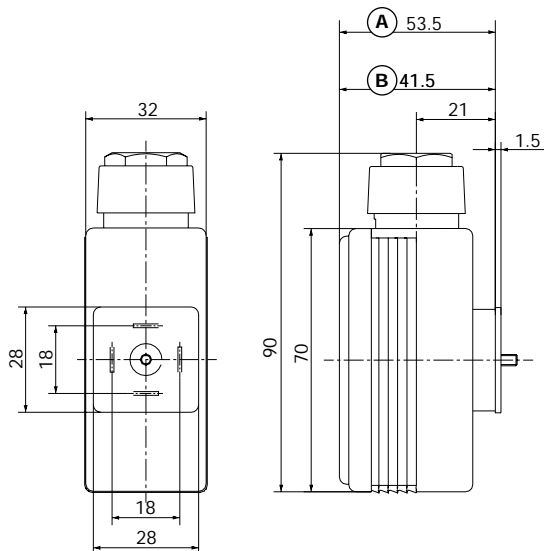
burkert
Easy Fluid Control Systems

Technical Data

Operating voltage:	24 V/DC	LCD-display of control-unit 1077-5:	4 1/2 - digit 7-segment display
Power consumption:	max. 1.5 W	Outputs	
Inputs		Output signal:	electr. PWM-signal (pulse-width-modulation) max. 1.0 A
Signal inputs:	2 frequency inputs (2 to 625 Hz)	Output current:	Integrated plug-in module acc. to DIN 43 650 A 2-pole with ground in 4 x 90 steps
Input impedance:	> 10 kΩ	Electr. connection:	
Type of signals:	Sinusoidal, square wave, triangular (≥ 300 m Vss)		
External set-point:	standard signal 4 ... 20 mA	Additional output:	24 VDC dor separate power supply of sensors
Electric connection:	In unit: 7 pole terminal + PE Cable ø 6-7 mm Wire cross-section max. 0.5 mm ² PG9 fitting	Rating (plugged-in):	IP 65
Programming: (with control-unit type 1077-5 ¹⁾)	- Setting K-factor - Setting of control parameter - Configuration of set-point - Monitoring of process values	Operating temperature:	-10 °C ... +60 °C
		Housing material:	Polyamide (PA)
		Mounting:	M3x45 mm cheesehead screw
		Installation:	as required
		Weight:	approx. 50 g

¹⁾ The control-unit type 1077-5 is not included in the delivery of type 8623 compact flow controller

Dimensions [mm]



A Dimension with plugged-in control unit
(not included in delivery of type 8623)

B Dimension with protection cover (included in delivery),
without control-unit

Remark:

When screwing the flow controller to the valve, ensure that the seal is properly seated.

Ordering Chart

Type	Item-No.
Flow Controller 8623	134 072 K
Flow Control-Unit 1077-5	134 052 P

