

Plug-in device for control of batching purposes



Design and function

The batch controller type 8600 enables to control batching purposes through solenoid valves. It works on microprocessor basis. It is installed on the socket of the solenoid valve according to DIN 43650 and connected to a flow sensor type 8020. After starting of a batch purpose, the pulses provided from the 8020 are counted and when reaching a pre-selected volume, the solenoid valve is closed.

The control unit 1077-4 is used to program and to operate the batch controller. The operation is also possible through the two binary inputs (start and reset) of the device.

Advantages/Benefits

- ▶ For installation on solenoid valves with cable plug socket according to DIN 43 650
- ▶ Quick and easy calibration/operation with plug-in control unit 1077-4
- ▶ Automatic adaptation to Burkert flow-sensor 8020 with coil or Hall sensor
- ▶ Teach-In-function
- ▶ Pause-function
- ▶ Reset-function
- ▶ Low installation and wiring costs
- ▶ Installation position selectable

Applications

- With Burkert flow-sensor type 8020 with coil or Hall sensor
- In-line dosing of fluids
- Batching of fluids in filling-stations
- Sampling

Connections

Power supply

Power supply range: 24 ... 48 V, AC/DC
Current consumption: max. 1,5 W

Measuring input

Input impedance >10 k Ω
Accuracy ± 1 pulse
Signal form Sinus, square, triangle
(>300 mVpp)

Connection to Burkert flow sensor 8020 with coil or Hall sensor

Frequency range: 1 ... 500 Hz

Mounting on solenoid valve cable plug socket according to DIN 43 650

Binary inputs

START and RESET signals for operation without control unit type 1077-4

Output

Contact output to control of solenoid valve. The output voltage is equal to power supply voltage.
Current: max. 1,5 A.

Operation

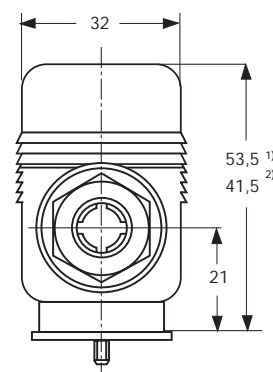


- **Programming mode**
Programming with the two keys of plug-in control unit type 1077-4
 - K-factor
 - Batch amount
- **Teach-In mode**
Automatic determination of K-factor and exact setting of batch limit
- **Operation mode**
Operation either with control unit type 1077-4 or through binary inputs.
 - Start of Batching purpose
 - Stop of Batching purpose
 - Pause of Batching purpose
 Display of batching amount on 4 1/2-digit LCD of control unit type 1077-4.

Dimensions and technical data

Total length: 90 mm
Total height: 41,5 mm
Total width: 32 mm
Fixing: Screw M 3 x 45 mm

Housing material: Polyamid
Enclosure: IP 65
Ambient temperature: -10... +60 °C
Weight: ≈ 50 g



¹⁾ with control unit
²⁾ without control unit, with protective cover

Ordering data

Batch controller, Type 8600 130 429 W
Control unit, Type 1077-4 130 447 Y