

3/2 way; DN 6 mm; 0 - 10 bar; 5 W;
G1/4 and NAMUR-flange; flow rate: 380 l/min



Design/Function

Type 712 is a direct-acting, electro pneumatic 3/2 way seat valve with electro magnetic actuator and spring reset.

It works internally pressure relieved and is actuated with a push-over coil with low power consumption.

Due to the aluminium or stainless steel body, the epoxy coil and the plastic terminal box, the valve can be used in slightly aggressive environment and our-door.

The valve is available with standard coil (IP 65).

(see data sheet type 712 NAMUR Ex)

Advantages / Benefits

- ▶ High switch reliability, even after a longer period of system standstill
- ▶ Operating from 0 bar without differential pressure
- ▶ Low electrical power consumption
- ▶ Push-over coil, rotatable around the coil axis in any position
- ▶ Assembly with NAMUR-flange directly on process valve
- ▶ For air and slightly aggressive environment
- ▶ Rating: IP 65

Applications

Fluids

- Lubricated or unlubricated compressed air
- Instrument air
- Nitrogen
- Suitable for technical vacuum

Applications

Control valve for pneumatic actuators, particularly for

- Chemical industry
- Petro chemical industry
- General processing industry
- Plant and mech. equipment manufacturers

bürkert
Easy Fluid Control Systems

Technical data type 712

Circuit function

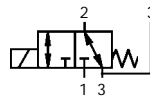
Switch symbol

T 3/2 way valve, direct-acting

De-energized: Port 2 connected to Port 3,
Port 1 closed

Energized: Port 1 connected to Port 2,
Port 3 closed

Universally applicable, any flow direction possible



Specifications (valve)

Orifice DN [mm]	Kv-value water ¹⁾ [m ³ /h]	QNm-value air ²⁾ [l/min]	Pressure range ³⁾ PN [bar]	Weight [kg]
6	0,35	380	0-10	1,2

¹⁾ Measured at 1 bar input pressure and free outlet at the temperature of +20 °C.

²⁾ Measured at 6 bar input pressure and 1 bar pressure drop at the valve and at +20 °C.

³⁾ All pressure data as overpressure to ambient atmospheric pressure

Valve specifications

Materials

Valve body	Aluminium, hard anodised Brass Stainless Steel
Valve internal parts	Stainless Steel, aluminium
Seal	NBR, FPM
Coil	Epoxy
Terminal box	Thermoplastic

Media	Lubricated and unlubricated compressed air Nitrogen Instrument air
-------	---

Media temperature	NBR: -20 °C up to +50 °C FPM: -10 °C up to +60 °C
-------------------	--

Ambient temperature	-25 °C up to +60 °C
---------------------	---------------------

Port connection	G 1/4" and NAMUR flange pattern;
-----------------	-------------------------------------

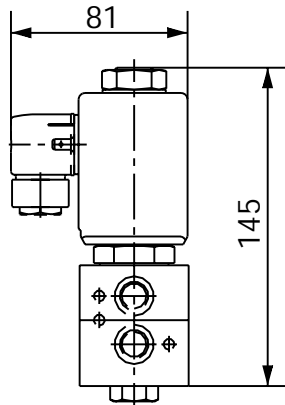
Solenoid specifications

Operating voltage	24 V DC other voltages on request
Voltage tolerance	+10% / -15%
Power consumption	5 W
Duty cycle	100 % continuously rated (with cable plug)
Electr. connection	Cable plug acc. DIN 43650 (Form A) EEx-ed IIC T6 version see data sheet type 712 NAMUR Ex

Installation

Mounting position	any, preferably actuator upright
-------------------	-------------------------------------

Dimensions [mm]

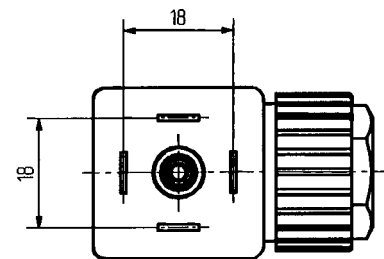
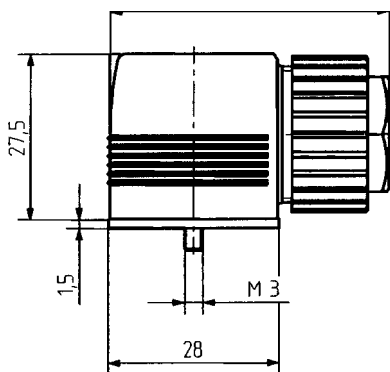


Ordering chart (other versions on request)

All valves with circuit function T, seal material NBR, aluminium body, 5 W electr. power consumption, pressure range 0–10 bar, flow rate 380 l/min (Q_{Nn}-value air), port connection G1/4 and NAMUR flange pattern

Voltage	Seal	Body Material	Item No.
24 VDC	NBR	Aluminium	130 817 K
24 VDC	NBR	Stainless Steel	135 846 R
24 VDC	FPM	Brass	135 847 J

Ordering chart accessories



Pin assignment
type 2508
(DIN 43 650 A)

Cable plug ¹⁾	Characteristics	Order No.
Type 2508	without circuit, 0–250 V	008 376 N
Type 2508	with LED, 12–24 V	008 360 S
Type 2508	with LED and varistor, 12–24 V	008 367 M
other versions of type 2508	with varying circuits (see data sheet)	

¹⁾ With these accessories, only a minimum of possible cable plugs with circuit are being mentioned.
For other versions see data sheet type 2508.

Solenoid Valve - Pneumatic
direct acting, pressure relieved

Type 712 NAMUR

