

3/2, 5/2 and 5/3 way valves; pilot-operated;
DN 8 and 9; flow rate: 1300 l/min; G 1/4 port connection



Advantages / Benefits

- ▶ Optimal system solutions due to high level of modularity
- ▶ High flow rates
- ▶ No stick-slip effect
- ▶ High switch reliability, even at full flow restriction
- ▶ Push-over coil in 4 x 90° turned positions lockable, any position in between
- ▶ Wide range of cable plugs with circuitry as accessories
- ▶ SS threaded ports and several classes of protection on request

Design/Function

Types 6518 / 6519 feature with high switch reliability diaphragm-driven seat valves (3/2 and 5/2 way) or spool valves (5/3 way).

The body is made of high quality thermoplastic (3/2 and 5/2 way) or aluminium (5/3 way). They represent a range and can be joined together.

The valve width of 32 mm allows high flow rates.

A compact solenoid valve with push-over coil is used as pilot.

Tag connectors are used for the electrical contact (acc. DIN 43 650 Form A) with the cable plug type 2508 or a appropriate type of the protected versions.

Types 6518 and 6519 can be used as single valves or as serial blocks.

The block assembly is made with pneumatic modules type MP07 and integrated lock technology and screwing.

Applications

Fluids

- Compressed air and neutral gases
- Technical vacuum on request

Applications

Control valves (single valves, valve blocks) for pneumatic linear- and turned actuators preferably for

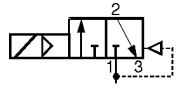
- Food and beverage industry
- General processing industry
- Packing machine manufact.
- Textile industry
- Tool-machine manufacturers
- Wood processing machine manufacturers

bürkert
Easy Fluid Control Systems

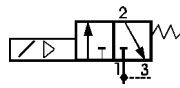
Technical Data type 6518/6519

Circuit functions

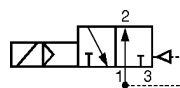
C 3/2 way valve type 6014, in de-energized position port 2 exhausted



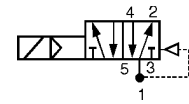
C 3/2 way valve for technical vacuum (on request)



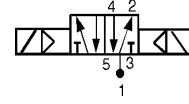
D 3/2 way valve, in de-energized position port 2 pressurized



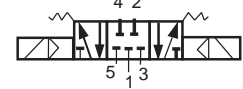
H 5/2 way valve, in de-energized position port 2 pressurized, port 4 exhausted



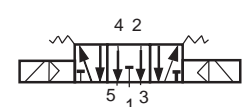
5/2 way valve, impuls version (on request)



L 5/3 way valve, in middle position all ports locked



N 5/3 way valve, in middle position ports 2 and 4 exhausted



Specifications

Circuit function	Orifice	Flow rate ¹⁾	Pressure range ²⁾	Port connection
	[mm]	QNm-valvue air [l/min]	[bar]	threaded port
C and D (3/2)	8,0	1300	2– 8	G 1/4
H (5/2)	8,0	1300	2– 8	G 1/4
L and N (5/3)	9,0	1300	3–10	G 1/4

¹⁾ Measured at 6 bar input pressure and 1 bar pressure drop at the valve and at +20 °C.

²⁾ All pressure data as overpressure to ambient atmospheric pressure.

Valve specifications

Valve body	Polyamide (PA) 5/3 way, aluminium anodised
Threaded port material	Brass, Stainless Steel on request
Sealing material	NBR and PUR (3/2 and 5/2 way) or NBR (5/3 way)
Media	Lubricated compressed air, neutral gases, technical vacuum (on request)
Media temperature	-10 up to +50 °C
Ambient temperature	-10 up to +55 °C
Response times ³⁾	
Open (On)	20 ms
Close (Off)	40 ms
Port connections	G 1/4

Solenoid specifications

Operating voltage	24 V/DC and AC 110 V AC (50–60 Hz) 230 V AC (50–60 Hz)
Voltage tolerance	±10 %
Electrical power consumption	2 W at DC and AC
Duty cycle	100 % continuously rated
Electr. connection	tag connectors acc. DIN 43650 Form A for cable plug type 2508 (see accessories)
Rating	IP 65 (with cable plug)
Ex-approval	(see data sheet Ex-versions)

Installation

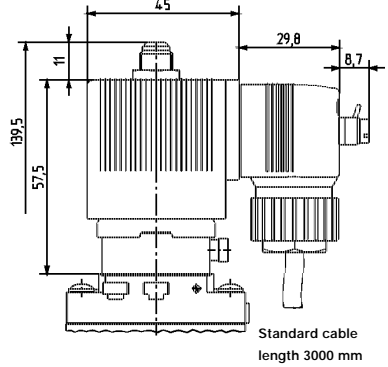
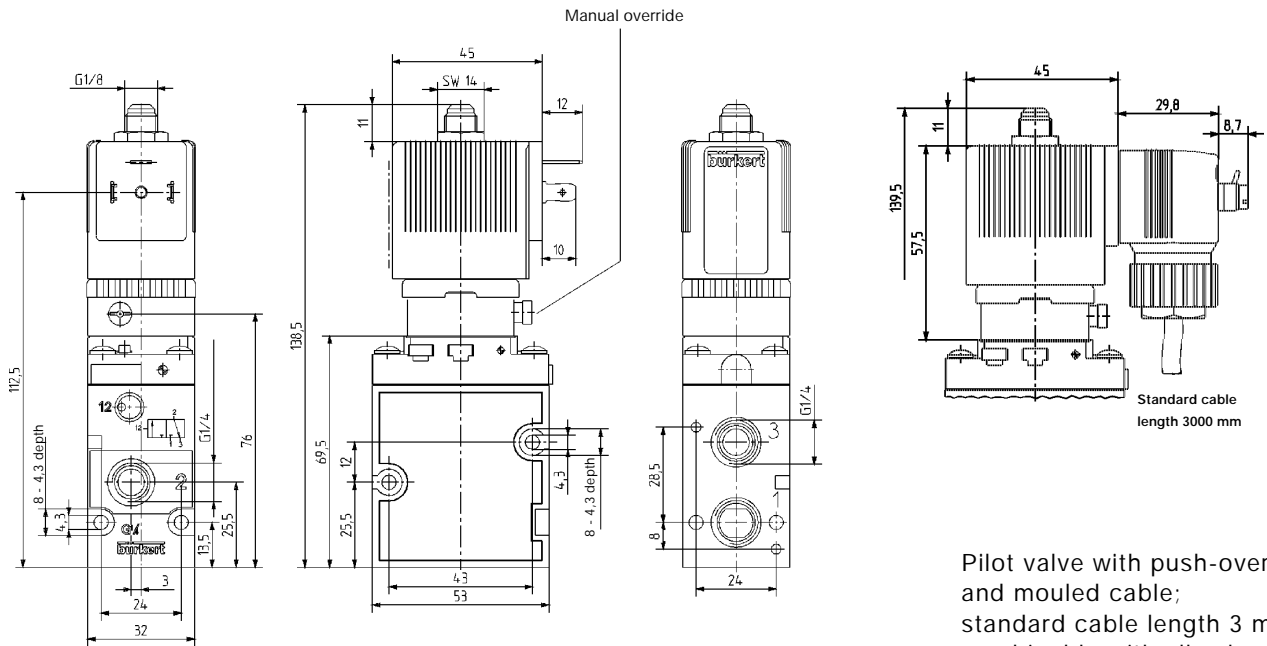
- Block assembly on MP07 with DIN-rail 50022 or 50023
- Single assembly with screwing on one side

Mounting position any, preferably solenoid system upright

³⁾ Measured at connection 2: time from electrical switching to pressure increase to 90% (opening) or pressure drop to 10% (closing) of operational pressure (6 bar). The values given apply for DC and AC; The time off increases by 10 up to 15 ms for UC-versions.

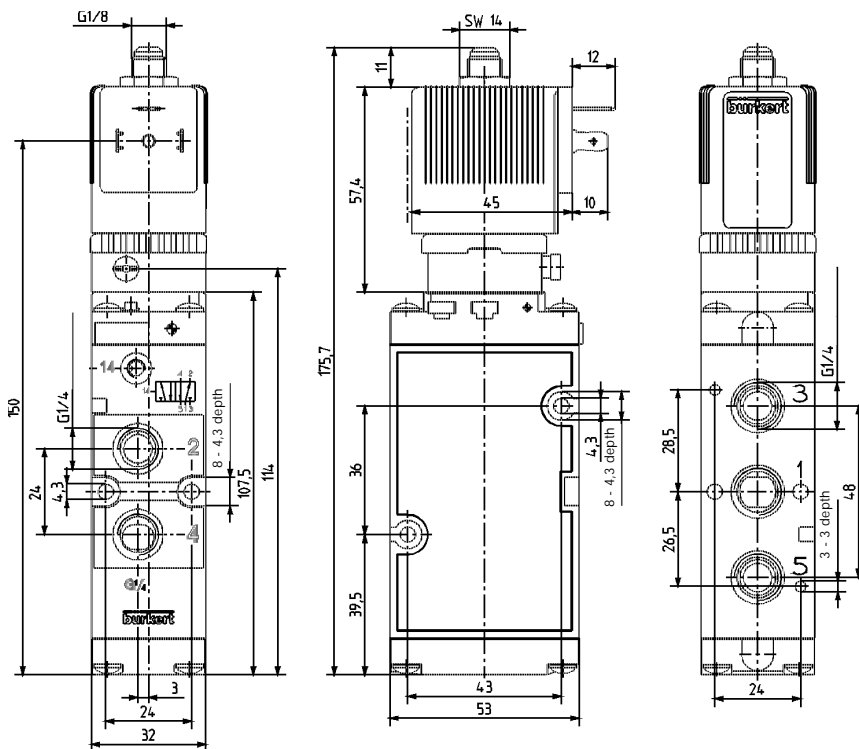
Dimensions single valve [mm]

Type 6518 (3/2 way valve), circuit function C and D; push-over coil in 4 x 90° turned positions lockable and in between, any position possible



Pilot valve with push-over coil and mouled cable;
standard cable length 3 m;
combinable with all valves
type 6518 and 6519.

Type 6519 (5/2 way valve), circuit function H, push-over coil in 4 x 90° turned positions lockable and in between, any position possible



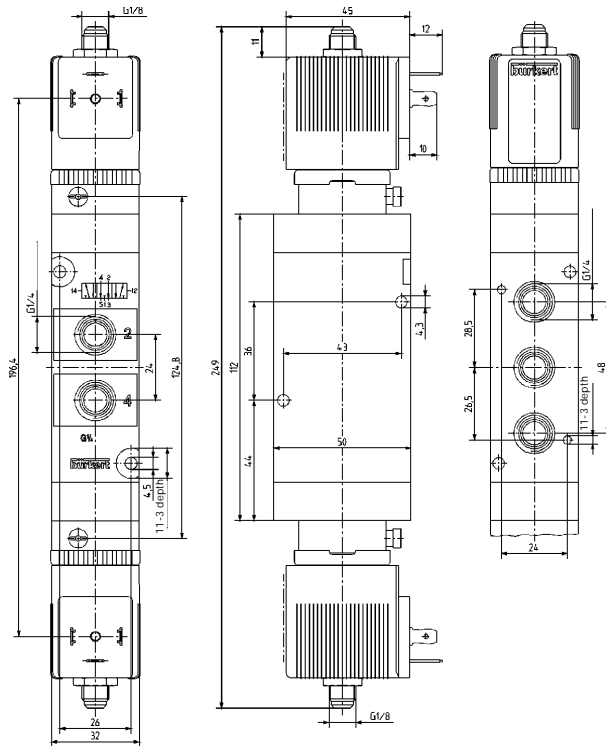
Multi-Way Valves for Pneumatics

servo-assisted, extendable, 32 mm wide

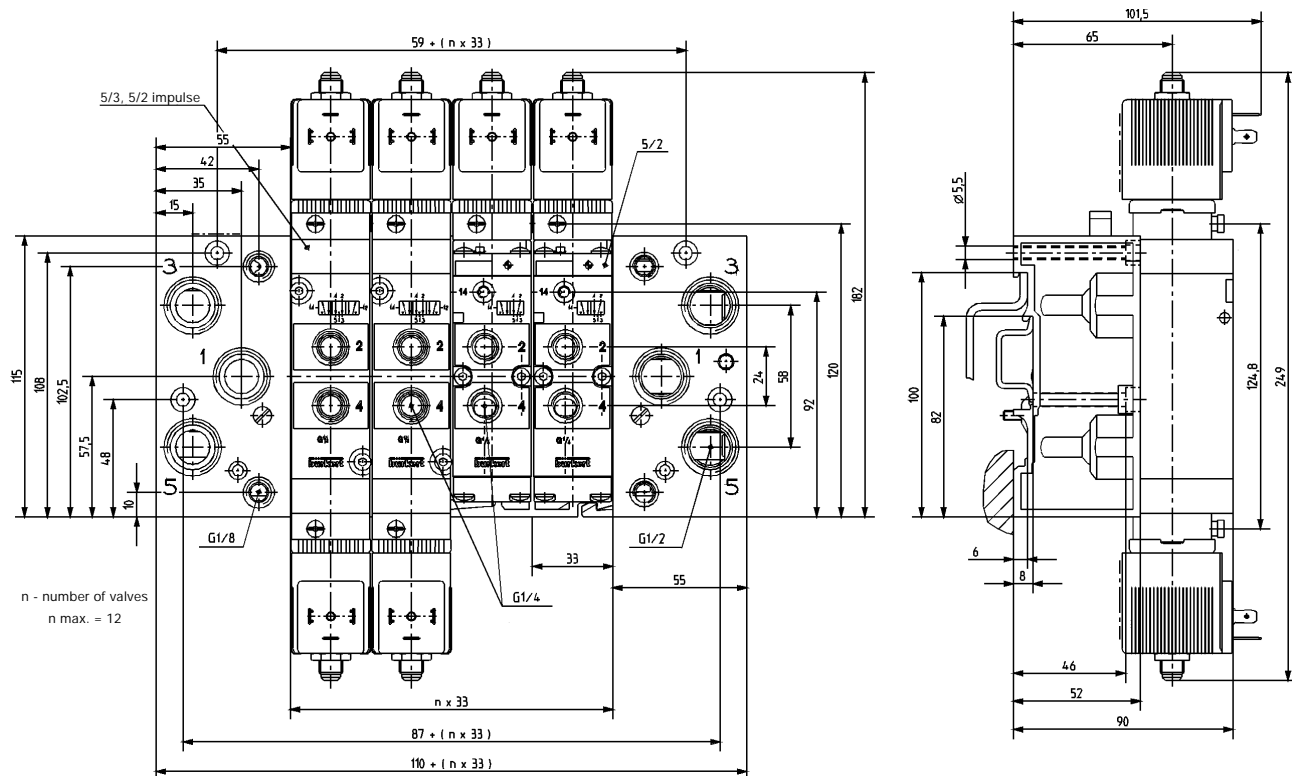
Type 6518/6519

Dimensions single valve [mm]

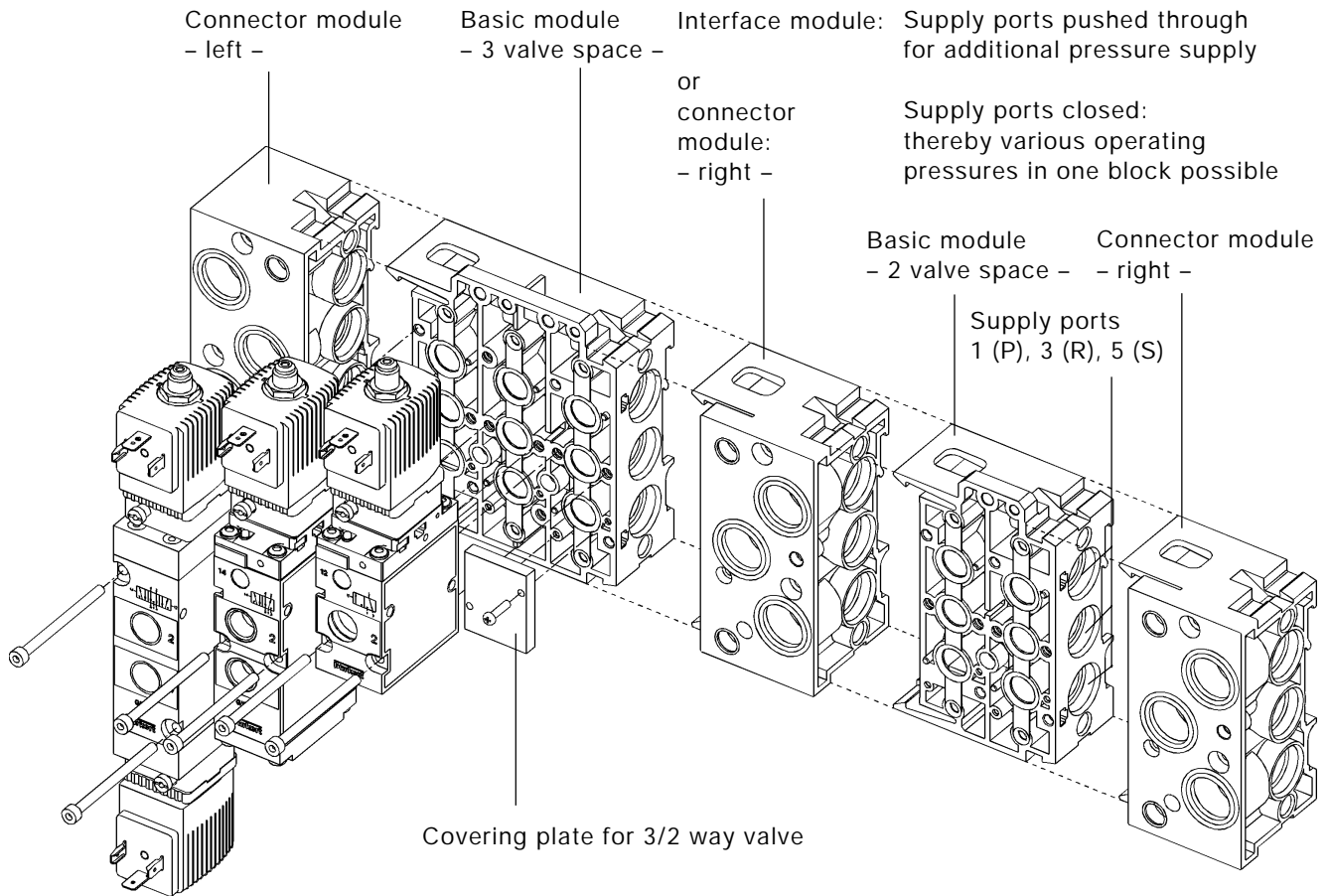
Type 6519 (5/3 way valve), circuit function L and N; push-over coil
in 4 x 90° turned positions lockable and in between, any position possible



Dimensions [mm] block and wall mounting with pneumatic modules type MP07, coil spacing 33 mm



Exploded view of block assembly with pneumatic modules type MP07, coil spacing 33 mm



Example of a valve block. Single modules or pre-mounted blocks are available. When ordering, please inform on the individual modules and the desired configuration from right to left.

Ordering chart pneumatic modules type MP07

Version	Item No.
Connector module left G 1/2	635 324 S
Connector module right G 1/2	635 331 Z
Interface module	637 505 T
Basic module 2 valve space universal (for 3/2, 5/2 and 5/3 way), inclusive fixing screws for valves	635 319 D
Basic module 3 valve space universal (for 3/2, 5/2 and 5/3 way), inclusive fixing screws for valves	635 342 C
Covering plate (to cover the left-free valve spaces on the basic modules)	635 335 V
Covering plate for 3/2 way valves (to cover the left-free connections)	635 337 X

Ordering chart type 6518/6519 (other versions on request)

Scope of delivery : All valves with port connection G 1/4

- Standard version with tag connectors on the side (pin assignment acc. to DIN 43 650 A), **without cable plug** (see accessories)

Circuit function	Orifice [mm]	Sealing material	Flow rate Q _{Nn} value air [l/min]	Pressure range [bar]	Standard version		Item No.
					Voltage/frequency [V/Hz]	Electrical power consumpt. [W]	
C (3/2)	8,0	NBR + PUR	1300	2- 8	24/DC	2	132 457 Q
					24/50-60	2	132 458 Z
					110/50-60	2	132 459 S
					230/50-60	2	132 460 X
D (3/2)	8,0	NBR + PUR	1300	2- 8	24/DC	2	132 461 L
					24/50-60	2	132 462 M
					110/50-60	2	132 463 N
					230/50-60	2	132 464 P
H ¹ (5/2)	8,0	NBR + PUR	1300	2- 8	24/DC	2	132 465 Q
					24/50-60	2	132 466 R
					110/50-60	2	132 467 J
					230/50-60	2	132 468 T
L (5/3)	9,0	NBR	1300	3-10	24/DC	2	132 469 U
					24/50-60	2	132 470 Z
					110/50-60	2	132 471 N
					230/50-60	2	132 472 P
N (5/3)	9,0	NBR	1300	3-10	24/DC	2	132 473 Q
					24/50-60	2	132 474 R
					110/50-60	2	132 475 J
					230/50-60	2	132 476 K

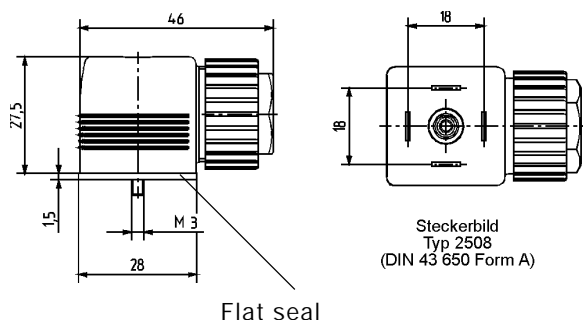
¹ Circuit function H (5/2 way) as impulse version on request.

Ordering chart accessories

Accessory part	Characteristics	Item No.
Cable plug type 2508 ¹⁾	without circuit, 0 - 250 V	008 376 N
Cable plug type 2508 ¹⁾	with LED, 12 - 24 V	008 360 S
Cable plug type 2508 ¹⁾	with LED and varistor, 12 - 24 V	008 367 M
Cable plug type 2508 ¹⁾	with LED and varistor, 200 - 240 V	008 369 X
Blanking screw	G 1/8	780 141 H
Blanking screw	G 1/4	780 142 A
Blanking screw	G 1/2	780 144 C
Silencer	G 1/8	005 305 D
Silencer	G 1/4	005 064 W
Silencer	G 1/2	005 062 U
Indicating tag	64 pieces	635 416 P

¹⁾ With these accessories, only a minimum of possible cable plugs with circuit are being mentioned. For other versions see data sheet type 2508. A flat seal and a fixing screw are part of the delivery scope of a cable plug.

Dimension of the cable plug type 2508



Attention!
Pay attention to a correct fit of the flat seal when mounting the cable plug!