



## Advantages/Benefits

- ▶ 25 or 80 Nm nominal torque
- ▶ Open/closed with choice of rotation speeds
- ▶ Flange interface ISO 5211
- ▶ IP 65 rating
- ▶ Corrosion-resistant
- ▶ Explosion-protection EEx eqd IIC T4

## Design/Function

The rotary actuator is a compact, powerful actuator system, which provides a long service life.

Materials and components have been chosen for maintenance-free operation.

The epoxy-encapsulated actuator body is protected by an additional polycarbonate body.

## Applications

The electric actuators operate control devices, such as:

- Ball valves
- Butterfly valves
- Disc valves
- Ventilators
- Mixer valves, e.g. in chemical industry, dosing or bottling systems





## Technical Data

### Specifications

Rotation angle	90°
Output torque <sup>1)</sup>	nominal torque 25 Nm
Rotation time	20 s/ 90° 40 s/ 90°
Drive	male / female square
Flange interface	ISO 5211 part 1 and 2
Body material	polycarbonate
Ambient temperature	-10 to +40 °C
Weight	4.5 kg
Standard version	<ul style="list-style-type: none"> <li>• reversible rotation direction</li> <li>• manual override</li> <li>• optical position indication</li> </ul>

### Electrical Data

Operating voltage	230 V/ 50-60 Hz
Nominal power consumption	85 mA (at 220V/ 50 Hz)
Voltage tolerance	±10 %
Power consumption (in warm condition)	20 Watt for nominal voltage, nominal torque
Duty cycle	100 % continuously rated
Electrical connection	PG-cable gland for plastic wire H 05 W-F 4 G 0.75
Rating	IP 65

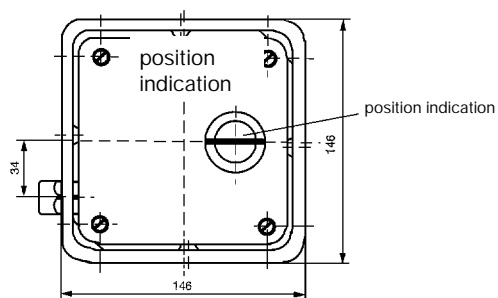
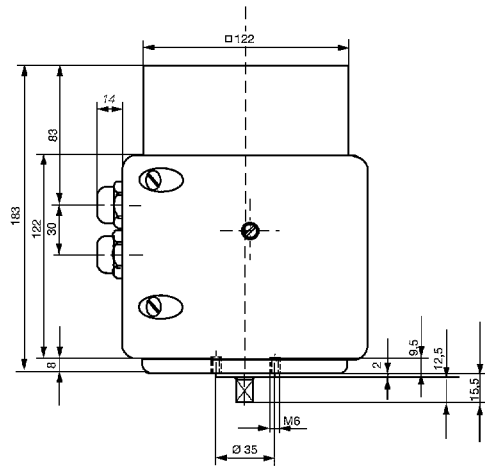
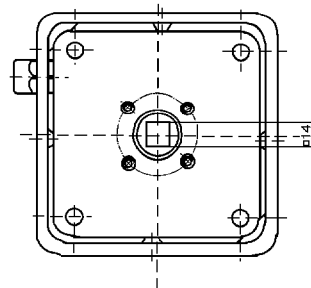
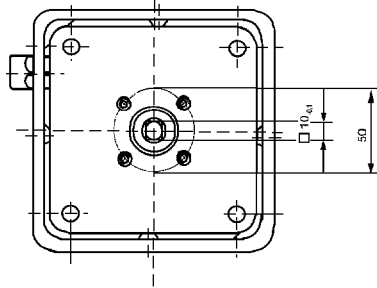
<sup>1)</sup> Higher torques admissible for a short period.



Dimensions in mm

Male square

Female square





## Ordering Chart (Other Versions on Request)

Rotation Angle	Output Torque	Rotation Time	Drive	Flange Interface	Body Material	Weight	Order-No.
90°	Nominal torque 25 Nm	20 s/ 90°	Male square	ISO 5211	Polycarbonate	4.5 kg	006 269 R
90°	Nominal torque 25 Nm	40 s/ 90°	Female square	ISO 5211	Polycarbonate	4.5 kg	000 770 Z