

2/2-Way Diaphragm Valve, Manually Operated Casted Stainless Steel Body with Weld Ends



3233

DN 4 - 50

- ✓ Fully integrated in Burkert's Easy Process Control Systems
- ✓ Hermetical separation of fluids from the operating mechanism by diaphragm
- ✓ Visual position indication
Optionally with locking function (\geq DN15)
- ✓ Various surface finishes
- ✓ Quality certifications

The manually operated diaphragm valve type 3233 consists of:

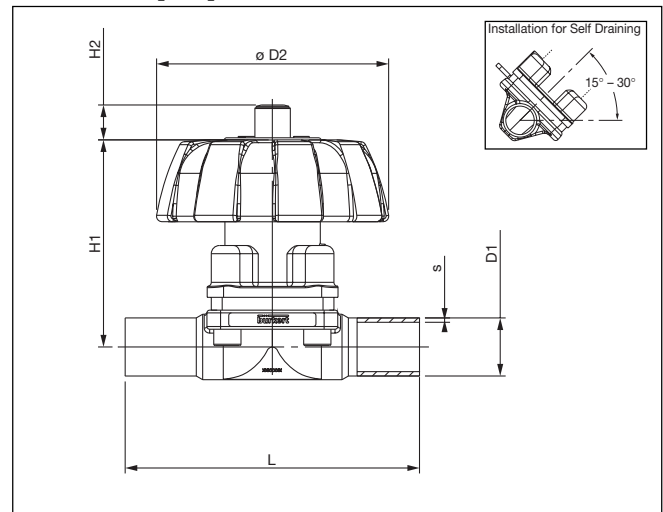
- Casted stainless steel body with various surface finishes
- Chemical neutral diaphragms
- Manual actuator

The medium is separated from the actuator and the environment. Its zero dead volume body, combined with various surface finishes allows a wide range of applications.

Technical Data

Connections	ISO 4200 and SMS 3008
Medium pressure	0 up to 10 bar
Temperatures	
Medium	-10°C... +130°C (short +150°C)
Ambient	+5°C... +140°C
Materials	
Valve body	stainless steel 316L investment cast
Diaphragm	EPDM, PTFE
Manual actuator	PPS
Bonnet	PPS, stainless steel 1.4581
Flow direction	Bi-direct

Dimensions [mm]



Specifications

Orifice DN	Kv-Value Water	Weight	
		Manual Actuator / Bonnet PPS / PPS	PPS / St.St.
[mm]	[m ³ /h]	[kg]	[kg]
4.0	0.8	0.3	0.4
6.0	0.8	0.3	0.4
8.0	1.0	0.3	0.4
10.0	1.0	0.3	0.4
15.0	6.0	0.6	0.7
20.0	11.0	0.9	1.0
25.0	16.0	1.6	1.8
40.0	29.0	3.1	3.4
50.0	50.0	3.7	4.2

ISO 4200 Connection (DN 4 and 6 - DIN 11850 Series 0)

Orifice DN	L	D1	s	D2	H1	H2
[mm]	[mm]	ø [mm]	[mm]	ø [mm]	[mm]	[mm]
4.0	90.0	6.0	1.0	35.0	56.0	–
6.0	90.0	8.0	1.0	35.0	56.0	–
8.0	90.0	13.5	1.6	35.0	56.0	–
10.0	90.0	17.2	1.6	35.0	56.0	–
15.0	110.0	21.3	1.6	80.0	85.0	7.0
20.0	119.0	26.9	1.6	80.0	93.0	11.0
25.0	129.0	33.7	2.0	80.0	94.0	12.0
40.0	161.0	48.3	2.0	114.0	116.0	19.0
50.0	192.0	60.3	2.0	114.0	133.0	25.0

SMS 3008 Connection

25.0	129.0	25.0	1.2	80.0	94.0	12.0
40.0	161.0	38.0	1.2	114.0	116.0	19.0
50.0	192.0	51.0	1.2	114.0	133.0	25.0



2/2-Way Diaphragm Valve, Manually Operated Casted Stainless Steel Body with Weld Ends

Specifications - Ordering Chart (Other Versions on Request) for ISO 4200 Connection

Orifice DN [mm]	Connection D1 x S [mm]	Surface finish *1. Glass beaded *2. Mech. polished *3. Satin finished *4. Electro polished [µm]	Item-No. Manual Actuator / Bonnet PPS / PPS		Manual Actuator / Bonnet PPS / Stainless Steel	
			EPDM Diaphragh.	PTFE Diaphragh.	EPDM Diaphragh.	PTFE Diaphragh.
			4.0	6.0 x 1.0	*1. Internal Ra<6.3 – External Ra<6.3	443 783 X
4.0	6.0 x 1.0	*2. Internal Ra<1.6 – External Ra<6.3	443 784 Y	443 792 Y	443 800 D	443 808 H
4.0	6.0 x 1.0	*3. Internal Ra<0.8 – External Ra<6.3	443 785 Z	443 793 Z	443 801 S	443 809 A
4.0	6.0 x 1.0	*4. Internal Ra<0.6 – External Ra<3.2	443 786 S	443 794 S	443 802 T	443 810 W
6.0	6.0 x 1.0	*1. Internal Ra<6.3 – External Ra<6.3	443 787 T	443 795 T	443 803 U	443 811 K
6.0	6.0 x 1.0	*2. Internal Ra<1.6 – External Ra<6.3	443 788 C	443 796 U	443 804 V	443 812 L
6.0	6.0 x 1.0	*3. Internal Ra<0.8 – External Ra<6.3	443 789 D	443 797 V	443 805 W	443 813 M
6.0	6.0 x 1.0	*4. Internal Ra<0.6 – External Ra<3.2	443 790 A	443 798 E	443 806 X	443 814 N
8.0	13.5 x 1.6	*1. Internal Ra<6.3 – External Ra<6.3	442 145 W	441 808 F	440 975 G	441 031 N
8.0	13.5 x 1.6	*2. Internal Ra<1.6 – External Ra<6.3	442 146 X	441 809 G	440 976 H	441 032 P
8.0	13.5 x 1.6	*3. Internal Ra<0.8 – External Ra<6.3	442 147 Y	441 810 U	440 977 A	441 033 Q
8.0	13.5 x 1.6	*4. Internal Ra<0.6 – External Ra<3.2	442 148 H	441 811 R	440 978 K	441 034 R
10.0	17.2 x 1.6	*1. Internal Ra<6.3 – External Ra<6.3	442 169 E	441 812 J	441 013 L	441 089 Z
10.0	17.2 x 1.6	*2. Internal Ra<1.6 – External Ra<6.3	442 170 B	441 813 K	441 014 M	441 090 W
10.0	17.2 x 1.6	*3. Internal Ra<0.8 – External Ra<6.3	442 171 Y	441 814 L	441 015 N	441 091 K
10.0	17.2 x 1.6	*4. Internal Ra<0.6 – External Ra<3.2	442 172 Z	441 815 M	441 016 P	441 092 L
15.0	21.3 x 1.6	*1. Internal Ra<6.3 – External Ra<6.3	442 268 R	441 816 N	441 059 A	441 143 T
15.0	21.3 x 1.6	*2. Internal Ra<1.6 – External Ra<6.3	442 269 J	441 817 P	441 060 F	441 144 U
15.0	21.3 x 1.6	*3. Internal Ra<0.8 – External Ra<6.3	442 270 P	441 818 Y	441 061 U	441 145 V
15.0	21.3 x 1.6	*4. Internal Ra<0.6 – External Ra<3.2	442 271 C	441 819 Z	441 062 V	441 146 W
20.0	26.9 x 1.6	*1. Internal Ra<6.3 – External Ra<6.3	442 307 H	441 820 W	441 117 R	440 971 C
20.0	26.9 x 1.6	*2. Internal Ra<1.6 – External Ra<6.3	442 308 J	441 821 K	441 118 S	440 972 D
20.0	26.9 x 1.6	*3. Internal Ra<0.8 – External Ra<6.3	442 309 K	441 822 L	441 119 T	440 973 E
20.0	26.9 x 1.6	*4. Internal Ra<0.6 – External Ra<3.2	442 310 F	441 823 M	441 120 Y	440 974 F
25.0	33.7 x 2.0	*1. Internal Ra<6.3 – External Ra<6.3	442 350 P	441 824 N	441 171 X	441 009 H
25.0	33.7 x 2.0	*2. Internal Ra<1.6 – External Ra<6.3	442 351 C	441 825 P	441 172 Y	441 010 V
25.0	33.7 x 2.0	*3. Internal Ra<0.8 – External Ra<6.3	442 352 D	441 826 Q	441 173 Z	441 011 J
25.0	33.7 x 2.0	*4. Internal Ra<0.6 – External Ra<3.2	442 353 E	441 827 R	441 174 S	441 012 K
40.0	48.3 x 2.0	*1. Internal Ra<6.3 – External Ra<6.3	442 408 F	441 828 S	440 955 C	441 051 S
40.0	48.3 x 2.0	*2. Internal Ra<1.6 – External Ra<6.3	442 409 G	441 829 T	440 956 D	441 052 T
40.0	48.3 x 2.0	*3. Internal Ra<0.8 – External Ra<6.3	442 410 U	441 830 Y	440 957 E	441 053 U
40.0	48.3 x 2.0	*4. Internal Ra<0.6 – External Ra<3.2	442 411 R	441 831 M	440 958 P	441 054 V
50.0	60.3 x 2.0	*1. Internal Ra<6.3 – External Ra<6.3	442 463 V	441 832 N	440 959 Q	441 109 A
50.0	60.3 x 2.0	*2. Internal Ra<1.6 – External Ra<6.3	442 464 W	441 833 P	440 960 M	441 110 W
50.0	60.3 x 2.0	*3. Internal Ra<0.8 – External Ra<6.3	442 465 X	441 834 Q	440 961 A	441 111 K
50.0	60.3 x 2.0	*4. Internal Ra<0.6 – External Ra<3.2	442 466 Y	441 835 R	440 962 B	441 112 L

Specifications - Ordering Chart (Other Versions on Request) for SMS 3008 Connection

Orifice DN [mm]	Connection D1 x S [mm]	Surface finish *1. Glass beaded *2. Mech. polished *3. Satin finished *4. Electro polished [µm]	Item-No. Manual Actuator / Bonnet PPS / PPS		Manual Actuator / Bonnet PPS / Stainless Steel	
			EPDM Diaphragh.	PTFE Diaphragh.	EPDM Diaphragh.	PTFE Diaphragh.
			25.0	25.0 x 1.2	*1. Internal Ra<6.3 – External Ra<6.3	442 354 F
25.0	25.0 x 1.2	*2. Internal Ra<1.6 – External Ra<6.3	442 355 G	441 837 K	440 964 D	441 164 Y
25.0	25.0 x 1.2	*3. Internal Ra<0.8 – External Ra<6.3	442 356 H	441 838 U	440 965 E	441 165 Z
25.0	25.0 x 1.2	*4. Internal Ra<0.6 – External Ra<3.2	442 357 A	441 839 V	440 966 F	441 166 S
40.0	38.0 x 1.2	*1. Internal Ra<6.3 – External Ra<6.3	442 412 J	441 840 A	440 967 G	441 025 Q
40.0	38.0 x 1.2	*2. Internal Ra<1.6 – External Ra<6.3	442 413 K	441 841 X	440 968 R	441 026 R
40.0	38.0 x 1.2	*3. Internal Ra<0.8 – External Ra<6.3	442 414 L	441 842 Y	440 969 J	441 027 J
40.0	38.0 x 1.2	*4. Internal Ra<0.6 – External Ra<3.2	442 415 M	441 843 Z	440 970 P	441 028 T
50.0	51.0 x 1.2	*1. Internal Ra<6.3 – External Ra<6.3	442 467 Z	441 844 S	440 993 T	441 075 S
50.0	51.0 x 1.2	*2. Internal Ra<1.6 – External Ra<6.3	442 468 A	441 845 T	440 994 U	441 076 T
50.0	51.0 x 1.2	*3. Internal Ra<0.8 – External Ra<6.3	442 469 B	441 846 U	440 995 V	441 077 U
50.0	51.0 x 1.2	*4. Internal Ra<0.6 – External Ra<3.2	442 470 G	441 847 V	440 996 W	441 078 D

In case of special application requirements,
please consult for advice.

We reserve the right to make technical changes without notice.
009-GB/ 2-0223