



Advantages/Benefits

- ▶ 6, 10, 25, 100 Nm nominal torque
- ▶ G 1/4 to G 2
- ▶ 2/2-way with motorized actuator
- ▶ Body material: stainless steel
- ▶ IP 65 rating
- ▶ Corrosion-resistant

Design/Function

The general purpose ball valve Type 3201 handles flow rates up to 192 m³/h.

The stainless steel body and PTFE seal material offer a wide range of applications for various fluids with a viscosity rating of up to 37 mm²/s.

The rotary actuator is compact and powerful. Materials and components have been chosen for maintenance-free operation even in aggressive environments and ensure low thermal loading on the actuator.

Applications

- Chemical industry
- Drinking water treatment
- Dosing and bottling systems

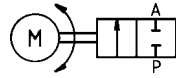
Ball Valve with Motorized Rotary Actuator

Type 3201

Technical Data

Circuit Function

I 2-way ball valve



Body Material

Stainless steel 1.4401
Motorized actuator: polycarbonate

Specifications

Orifice DN [mm]	Kv-Value Water [m ³ /h]	Pressure Range ¹⁾ for Fluid Temperature		Weight [kg]
		up to +80 °C [bar]	up to +130 °C [bar]	
10	3,6	0-64	0-35	1,1
15	14	0-64	0-35	1,3
20	24	0-40	0-25	4,4
25	31	0-40	0-25	4,8
32	73	0-25	0-16	5,3
40	146	0-25	0-16	5,9
50	192	0-25	0-16	7,2

¹⁾ Also suitable for vacuum.

All pressures quoted are gauge pressures with respect to the prevailing atmospheric pressure.

Operating Data (Valve)

Seal Material/Fluids Handled/Temp.-Range

PTFE Water, steam, alcohol, oils, petrol, hydraulics
material, organic solvents.
-30 to +130 °C

For more detailed information please refer to resistance
chart (Leaflet-No. 1896009).

Max. ambient temperature +50 °C

Max. viscosity 37 mm²/s

Port connection G 1/4, 1/2, 3/4, 1, 1 1/4,
1 1/2, 2

Operating Data (Actuator)

Operating voltages 110, 230 V/50 Hz
24 V/UC (universal current)
12, 24 V/=

Voltage tolerance ±10 %

Power consumption AC 55 W *
(in warm condition) DC 20 W *

* for nominal voltage and nominal torque

Duty cycle AC 50 % intermittent
operation
UC, DC 100 %
continuously rated

Rating IP 65

Electrical connection • cable plug for
6 to 7 mm ø
• PG 11 cable gland,
DN 46320

Output torque 6, 10, 20, 25, 100 Nm
depending on version

Rotation angle 90 °

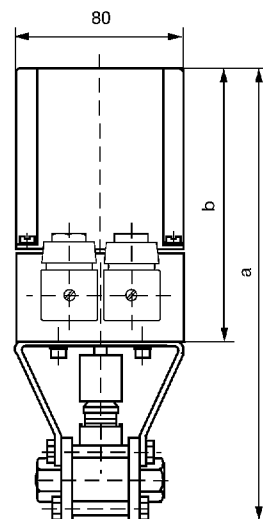
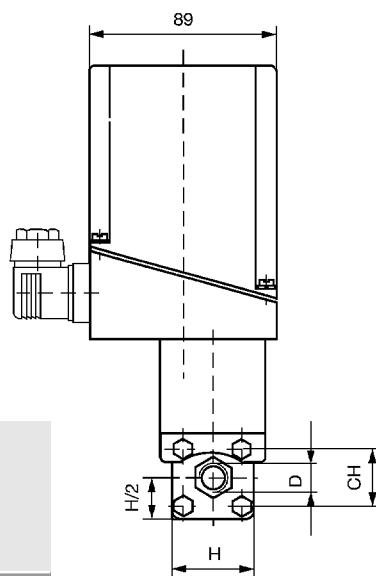
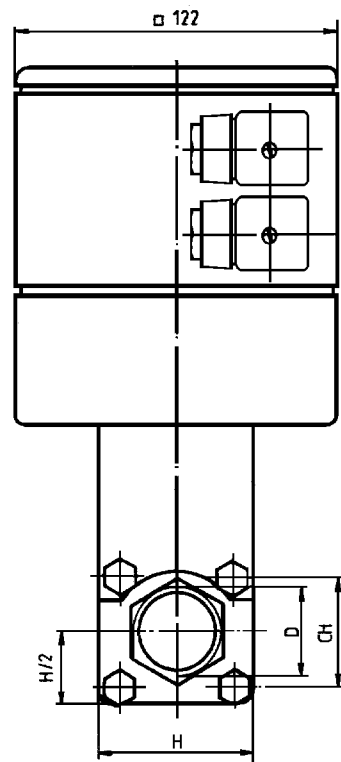
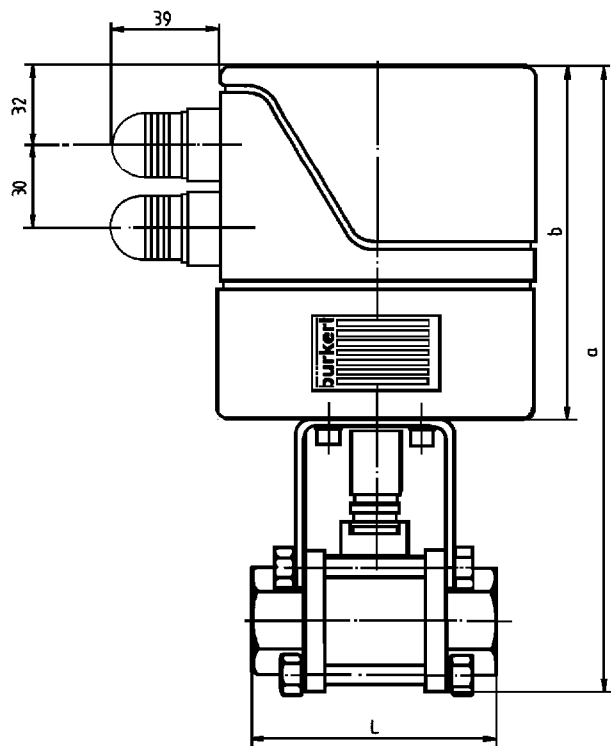
Installation/Accessories

Installation as required

Ball Valve with Motorized Rotary Actuator

Type 3201

Dimensions in mm



DN	D	H	CH	L	Actuators		
					3001 3002 3010 a	3011 a	b
10	G 1/4	33	23	58	206	-	133,5
13	G 1/2	37,5	27	65	219	-	133,5
20	G 3/4	46,5	32	77	226	218,5	133
25	G 1	57	42	92	238,5	231	133
32	G 1 1/4	66,5	50	106	252	-	133
40	G 1/2	76	55	115	276	-	133
50	G 2	90	70	136	359	-	168

Ball Valve with Motorized Rotary Actuator

Type 3201

Ordering Chart (Other Versions on Request)

	Circuit Function	Orifice DN	Flow Rate Water Kv-Value [m ³ /h]	Port Connection [ISO 228]	Pressure ¹⁾ Range		Rotation Angle [°]	Rotation Time/ Rotation Angle 90° [s]	Output Torque [Nm]	Weight [kg]	Voltage/ Frequency [V/Hz]	Order-No.
					+80°C [bar]	+130°C [bar]						
I	3010	10	3,6	G 1/4	0-64	0-35	90	15	6	1,1	230/50	700 220 U
											024/UC	700 714 P ²⁾
	3010	13	9	G 1/2	0-64	0-35	90	7,5	6	1,3	012/=	700 624 M
								7,5	6	1,3	230/50	700 086 E
								7	6	1,3	024/UC	700 171 P ³⁾
	3001	20	24	G 3/4	0-40	0-25	90	7	25	4,4	230/50	700 084 C
	3011	20	24	G 3/4	0-40	0-25	90	10	10	4,4	230/50	700 599 M
	3001	20	24	G 3/4	0-40	0-25	90	14	25	4,4	230/50	700 099 K ⁵⁾
	3011	20	24	G 3/4	0-40	0-25	90	30	10	4,4	230/50	700 621 J
	3011	25	31	G 1	0-40	0-25	90	30	20	4,8	024/=	700 737 N
	3001							7	20	4,8	230/50	700 085 D
								28	20	4,8	230/50	700 135 B
	3001	32	73	G 1 1/4	0-25	0-16	90	7	25	5,3	230/50	700 111 B
								28	25	5,3	230/50	700 151 K
	3001	40	146	G 1 1/2	0-25	0-16	90	14	25	5,9	110/50	700 367 T ⁴⁾
								7	25	5,9	230/50	700 143 K ⁴⁾
											230/50	700 073 Q
											024/UC	700 193 E ³⁾⁵⁾
	3002	40	146	G 1 1/2	0-25	0-16	90	7	6	5,9	024/=	700 368 C ⁶⁾
	3002	50	192	G 2	0-25	0-16	90	14	100	7,2	230/50	700 121 D

¹⁾ Also suitable for technical vacuum / Fluid temperature up to +80 °C or +130 °C, ²⁾ Standard signal control 4-20 mA, ³⁾ Standard signal control 0-10 V, ⁴⁾ With 2 additional limit switches, ⁵⁾ With PG 11 cable gland, ⁶⁾ Height b in dimensional drawing 168 mm.