

DN13-25, G 1/2 bis 1"



Design

The externally piloted angle-seat valve is operated with a piston actuator.

High flow rates are attained with the gunmetal 2-way body. The reliable self-adjusting packing gland provides high sealing integrity. These maintenance-free and robust valves can be retrofitted with a comprehensive range of accessories for position indication, stroke limitation or manual override.

Advantages / Benefits

- ▶ Spring return closed or open, double-acting
- ▶ Materials: gunmetal, stainless steel
- ▶ High flow rate
- ▶ With self-adjusting packing glands, intermediate relief and wiper
- ▶ Optical position indication
- ▶ Pilot connection can be rotated through 360°
- ▶ Low control air consumption due to minimized volume in the actuator
- ▶ Electrical position indication, stroke limitation and manual override available as accessories

Applications

Neutral gases and liquids up to 10 bar

Systems engineering

Water technology

Food processing

Process technology

Air dryers

Hazardous areas

bürkert
Easy Fluid Control Systems

2/2-Way Angle-Seat Valve

for Neutral Fluids

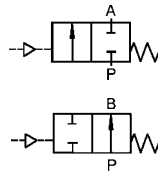
Type 2001
Waterhammer-free

Technical Data

Control Functions

A 2/2-way valve, normally closed spring return.

B 2/2-way valve, normally open spring return.



Body Material

Gunmetal

Specifications

Connections ISO 228 ¹⁾	Orifice DN [mm]	Kv-Value Water [m ³ /h]	Max. Operating Pressure Fluid up to 100 °C Size Control Function [bar]		Actuator [mm]	Weight [kg]
			A	B		
G 1/2	13,0	4,2	10	-	50	0,7
	13,0	4,2	-	10	50	0,7
G 3/4	20,0	8	10	-	50	0,8
	20,0	8	-	10	50	0,8
G 1	25,0	19	10	-	63	1,4
	25,0	19	-	10	63	1,4

¹⁾ Or weld spigot ISO 4200.

All pressures quoted are gauge pressures with respect to the prevailing atmospheric pressure.

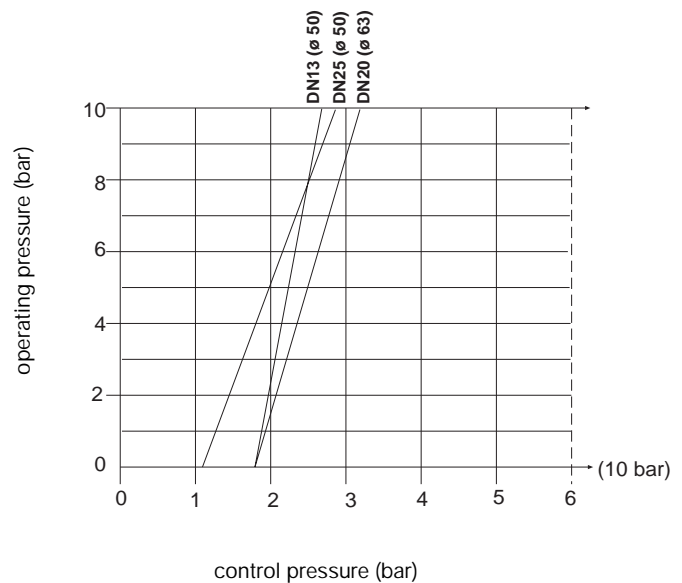
Operating Data

Body material	gunmetal
Threaded connection	ISO 228, NPT ²⁾
Nominal pressure	PN 10
Min. control pressure	
control function A	4.5 bar
control function B	see diagram
Max. control pressure	10 bar (Control functions A+B)
Control fluid	neutral gases, air
Max. viscosity	600 m ² /s
Ambient temperature	
PA-actuator	-10 °C to +60 °C
Fluid temperature	-10 °C to +100 °C
Seal materials	PTFE
Packing glands	self-adjusting PTFE-stemseal
Fluids	water, air, hydraulic liquids and other neutral fluids

Installation

Installation as required

Control pressure for control function B

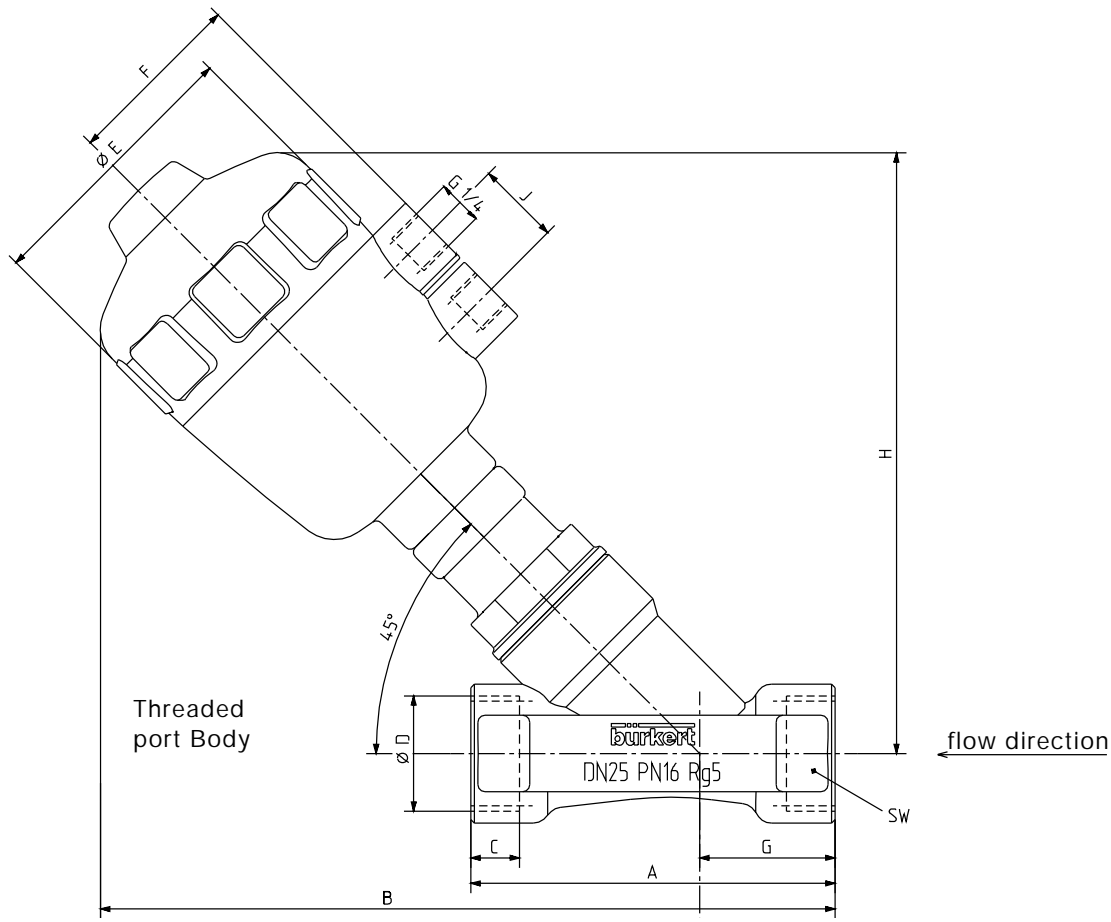


²⁾ on request.

2/2-Way Angle-Seat Valve for Neutral Fluids

Type 2001
Waterhammer-free

Dimensions in mm



DN	Actuator Size ø in mm	A	B	C	ø D	ø E	F	G	H	J	SW
13	50	85	173	12	G 1/2	64	44	33	137	24	27
20	50	95	178	12	G 3/4	64	44	36	145	24	32
25	63	105	212	14	G 1	80	52	39	173	24	41



2/2-Way Angle-Seat Valve

for Neutral Fluids

Type 2001
Waterhammer-free

Ordering Chart (Other Versions on Request)

Type 2001 with gunmetal body (threaded port), PA-actuator, PTFE-seal material, pilot port with brass inserts

Control Function	Orifice DN [mm]	Port Connection ISO 228 [bar]	Max. Operating Pressure Fluid up to 100 °C [bar]	Actuator Size [mm]	Order-No.
A	13	G 1/2	10	50	001 127 N
	20	G 3/4	10	50	001 128 X
	25	G 1	10	63	001 129 Y
B	13	G 1/2	10	50	001 141 U
	20	G 3/4	10	50	001 142 V
	25	G 1	10	63	001 143 W

Options and Accessories on Request

- Control function I (double-acting actuator).
- For electrical position feedback please refer to data sheet Type 1062.
- Magnetic-inductive proximity sensors for position feedback mounted to the actuator.
- Independently adjustable stroke limitation:
 - for high and low flow
- Manual override.
- NAMUR-adaptor for pilot valve.

- Pilot valves:

	Order-No.
Type 375, DN 1,2: 220/≈ (incl. double nipple) for actuator sizes 50, 63 mm	700 875 R
Type 311, DN 2,0: 220/50 (incl. double nipple) for actuator 63 mm	700 876 J
For other operating voltages, please refer to the data sheets 375/311	