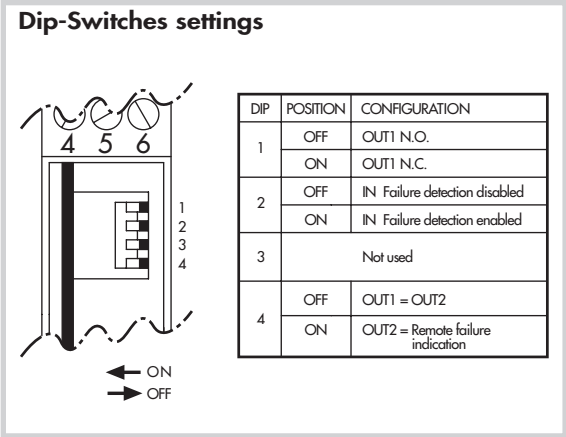
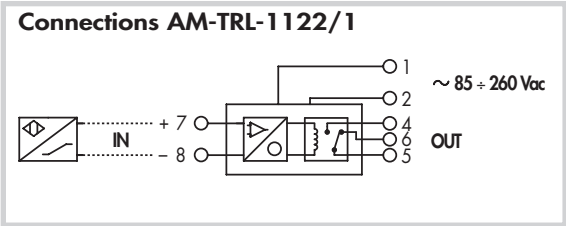
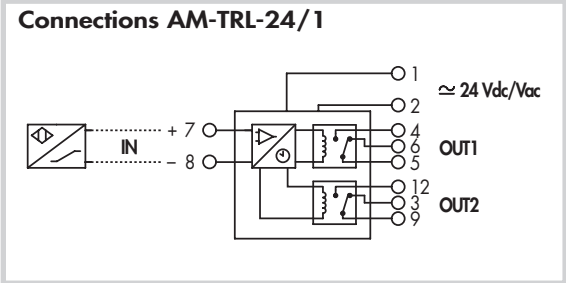
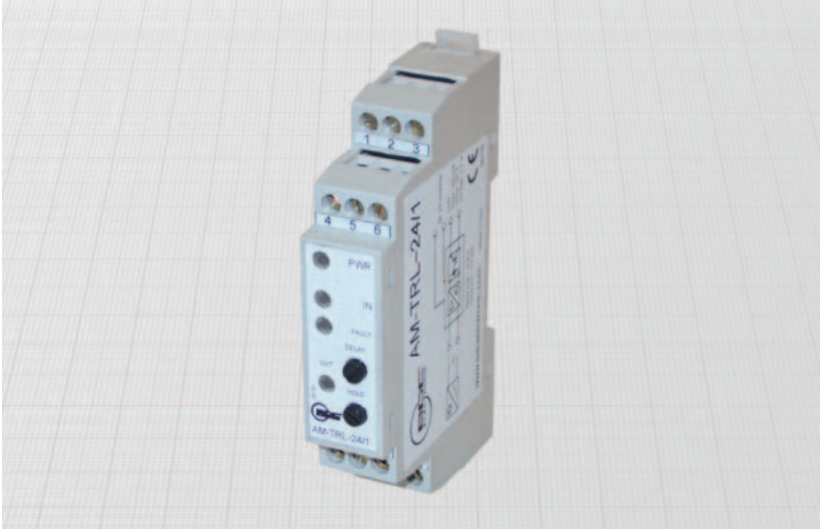
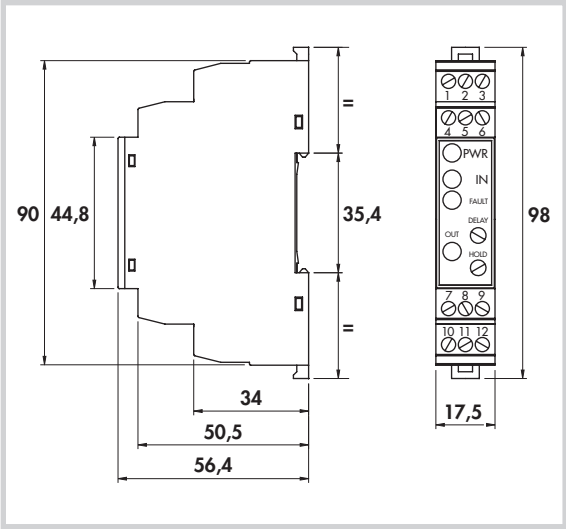


AMPLIFIERS FOR SENSORS

• RELAY OUTPUT

• 1 Timed channel



General Features:
These units allow to amplify signals from NAMUR sensors or contacts. The delay time and hold time respect the input signal are adjustable through potentiometers on the front panel. The relay outputs have changeover N.O.+N.C. contacts electrically insulated from each other, from power supply and from all the inputs. On the 24V version is also possible to configure the OUT2 with the same function of OUT1 or use it as remote failure indication. When used for NAMUR sensors, the indication of failures is visible with a red LED on the front panel for interruptions or short circuits on the input lines.
The configuration dip-switches are easily accessible removing the front panel. Suitable for DIN rail mounting.

Technical data:

- Supply voltage: see ordering references
- Frequency of supply voltage: DC or 50 - 60 Hz
- Power consumption max: see ordering references
- Working temperature: $-25^{\circ} \div +60^{\circ} \text{ C}$
- Storage temperature: $-40^{\circ} \div +80^{\circ} \text{ C}$
- Degree of protection: IP20
- According to EN60947-5-6
- Electromagnetic compatibility (EMC) according to EN61000-6-2/-4

INPUT PARAMETERS

- Switching point to ON: $\geq 1,75 \text{ mA}$
- Switching point hysteresis: $0,2 \text{ mA}$
- Failure detection thresholds: open circuit detection when $I < 0,05 \text{ mA}$
short circuit detection when $I > 7,45 \text{ mA}$ ($R_i < 100 \text{ ohm}$)

OUTPUTS

- Output function: NO + NC (SPDT)
- Maximum contact voltage: 250 V
- Rated current: 5 A
- Bouncing on N.O./N.C. contacts typical: $1/5 \text{ msec}$
- Insulation from power supply and from inputs: 2500 V
- Range of delay and hold timing adjustments: $10 \text{ msec.} \div 25,6 \text{ sec.}$

SUPPLY VOLTAGE	N. CHANNELS	POWER CONSUMPTION MAX mA	ORDERING REFERENCES
24 V a.c. - d.c. $\pm 20\%$	1	60	AM-TRL-24/1
85 \div 260 V a.c.	1	20	AM-TRL-1122/1