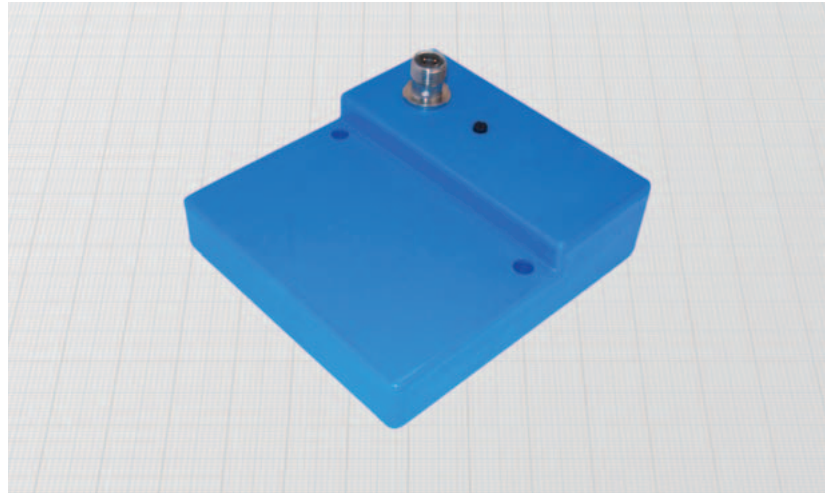
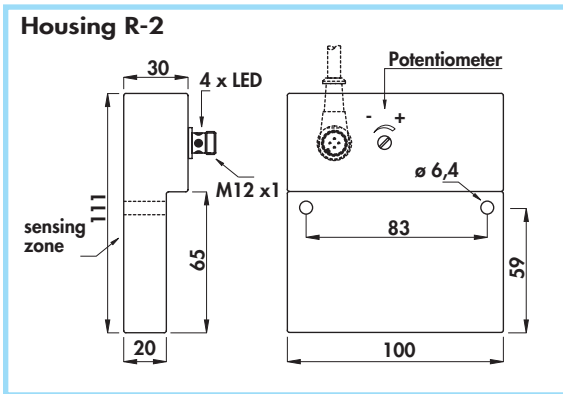
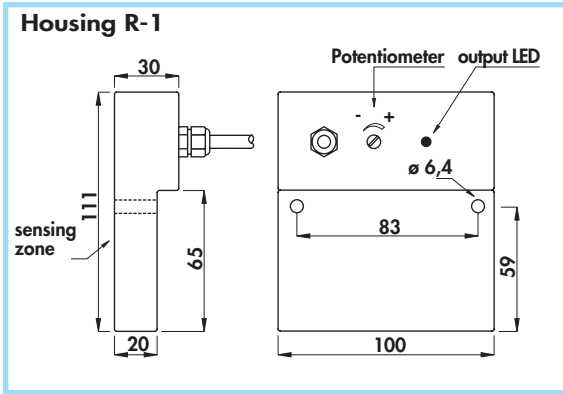


**Type R - Adjustable sensing distance** •  
**Amplified in d.c. 3 and 4 wires** •  
**Cable and connector output M12 x 1** •



**Materials:**

- Cable: 2 m PVC CEI 20 - 22 II; 90°C; 300 V; O.R.
- Housing: plastic
- Connector: nickel plated brass

**General Features:**

These sensors are suitable for non flush mounting and have the adjustable sensing distance turning a multiturn potentiometer.

**Technical data:**

- Supply voltage ( $U_b$ ): 10 ÷ 60 Vdc
- Max ripple: 10%
- No-load supply current ( $I_o$ ): ≤ 10 mA
- Voltage drop ( $U_d$ ): ≤ 2,2 V
- Temperature range: -20° ÷ +70°C
- Max thermal drift of sensing distance  $S_r$ : ± 10%
- Repeat accuracy (R): 2%
- Switching hysteresis (H): 10%
- Degree of protection: IP65
- Switch status indicator: yellow LED
- Cable conductor cross section (cable version): 0,50 mm<sup>2</sup>
- Protected against short-circuit and overload
- Protected against any wrong connection
- Suppression of initial false impulse
- Electromagnetic compatibility (EMC) according to EN60947-5-2
- Shock and vibration resistance according to EN60068-2-27 EN60068-2-6

Housing	Mounting	Cable diameter	Female connector	Sensing zone diameter	Max switching frequency (f)	Rated operational current ( $I_o$ )	Nominal sensing distance ( $S_n$ ) ± 10%	ORDERING REFERENCES		
								PNP (positive switching)		
R - 1	Flush mounting	6	-	75	0,3	400	10 ÷ 55	NO	NC	NO + NC
	Non flush mounting							DCAR/5809KS	DCAR/5819KS	DCAR/5829KS
R - 2	Flush mounting	-	6-8B-10	75	0,3	400	10 ÷ 55	NO	NC	NO + NC
	Non flush mounting							DCAR/5309KS	DCAR/53C9KS	DCAR/5329KS

**NPN (negative switching)**  
 Use the above mentioned part number changing the last number 9 with 8 (ie DCAR/5808KS)