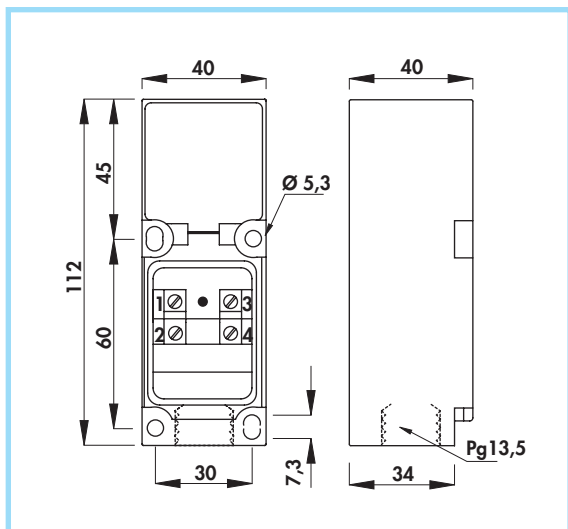
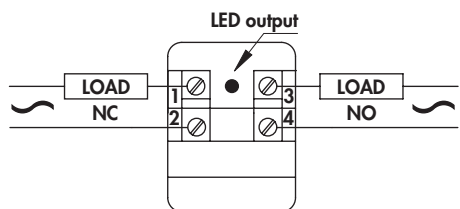


RECTANGULAR INDUCTIVE SENSORS

- **Type P - 5 Positions head**
- **Amplified in a.c.**
- **Terminal block output**

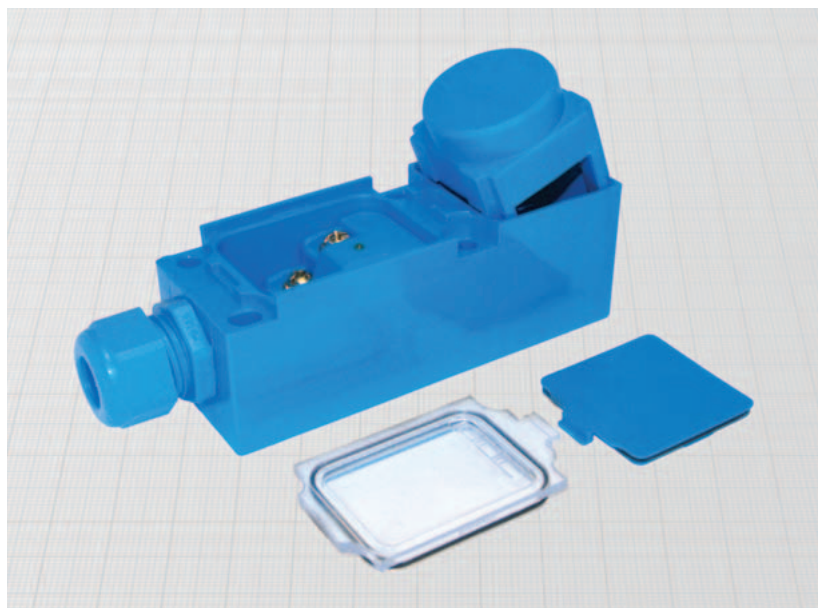


Connection diagram



Materials:

- Housing: plastic
- Terminal block cover: pycarbonate





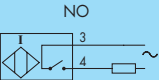
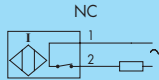
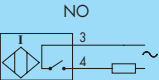
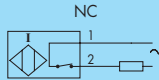
General Features:

These sensors are called "turnable sensing head" because the sensing head, inside the plastic housing can be positioned on 5 different positions. To choose the desired sensing face it is enough to remove the cover and set the sensing head in the proper position.

The internal terminal block can be easily reached by removing the transparent cover. The included plastic gland Pg13.5 is suited for cables diameter up to 9 mm.

Technical data:

- Supply voltage (U_B): 20 ÷ 240 Vac
- Electrical system frequency: 40 ÷ 60 Hz
- Off-state current (I_o): ≤ 1,5 mA at 110 Vac
- Minimum operational current (I_m): 5 mA
- Voltage drop (U_d): ≤ 5 V
- Temperature range: - 25° ÷ + 70°C
- Max thermal drift of sensing distance S_r : ± 10%
- Repeat accuracy (R): 4%
- Switching hysteresis (H): 10%
- Degree of protection (with fully locked gland): IP65
- Switch status indicator: yellow LED
- Suppression of initial false impulse
- Class 2 equipment according to IEC 536 
- Shock and vibration according to EN60068-2-27 EN60068-2-6
- Electromagnetic compatibility (EMC) according to EN60947-5-2 

Mounting	Sensing zone diameter	Max switching frequency (f)	Rated operational current (I_e)	Nominal sensing distance (S_n) ± 10%	ORDERING REFERENCES	
					NO	NC
Flush mounting	mm	Hz	mA	mm		
Non flush mounting	mm	Hz	mA	mm		
•	30	25	500	15	ACP/4709S	ACP/4719S
•	30	25	500	20	ACP/5709S	ACP/5719S