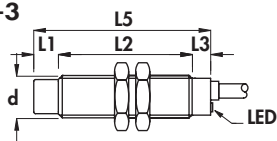
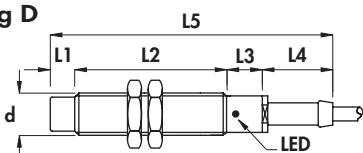


Diameters 12 - 18 mm •
Amplified in a.c. 2 wires •
Cable output •

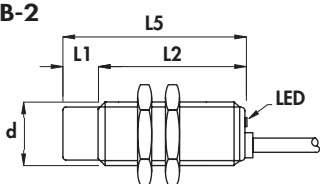
Housing B-3



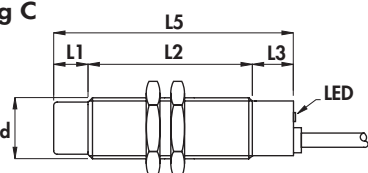
Housing D



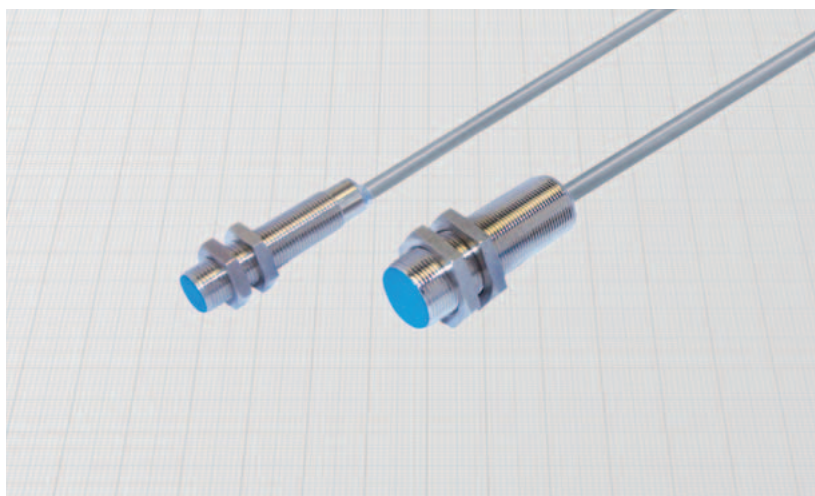
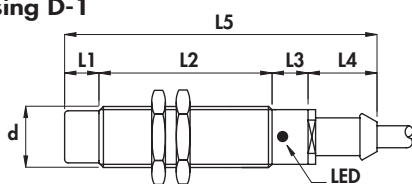
Housing B-2



Housing C



Housing D-1



Diameter	M12 x 1	M18 x 1
Nut	Size	SW17
	Thickness mm	4
Max tightening torque Nm	15	35

Materials:

- Cable: 2 m PVC CEI 20 - 22 II; 90°C; 300 V; O.R.
- Housing: nickel plated brass
- Sensing face: plastic

Technical data:

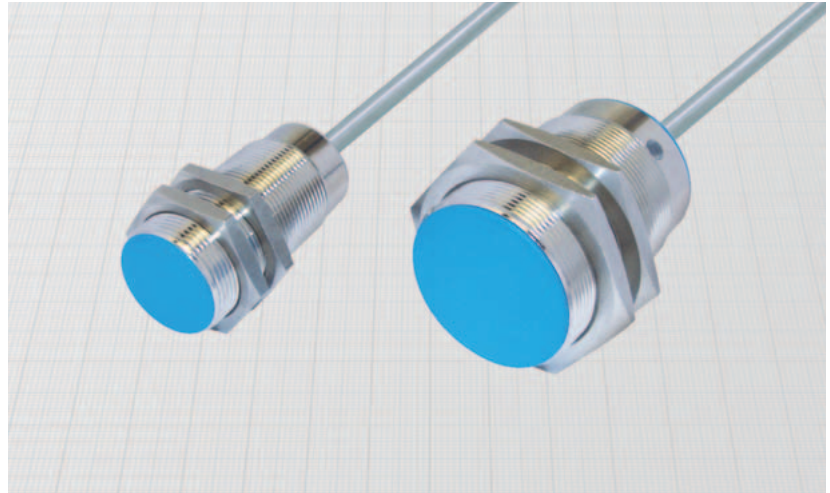
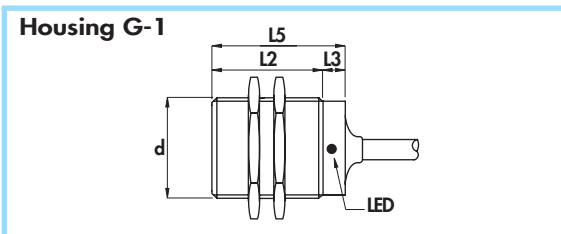
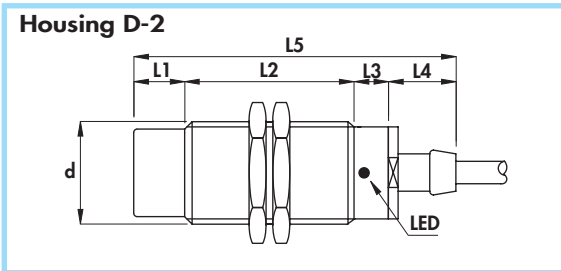
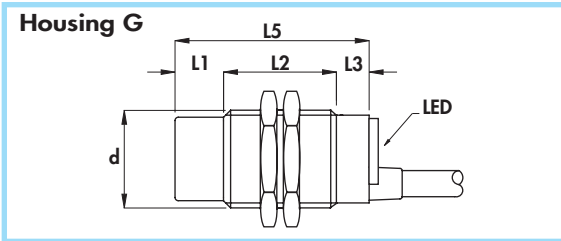
- Supply voltage (U_B): 20 ÷ 240 Vac
- Electrical system frequency: 40 ÷ 60 Hz
- Off-state current (I_o): ≤1,5 mA at 110 Vac
- Minimum operational current (I_m): 5 mA
- Voltage drop (U_d): ≤ 5 V
- Temperature range: -25° ÷ +70°C
- Max thermal drift of sensing distance S_r : ± 10%
- Repeat accuracy (R): 2%
- Switching hysteresis (H): 10%
- Degree of protection: IP67
- Switch status indicator: yellow LED
- Cable conductor cross section: 0,35 mm² on 12 mm
0,50 mm² on 18 mm (Housing C)
0,75 mm² on 18 mm (Housing D - 1)

- Suppression of initial false impulse
- Class 2 equipment according to IEC 536
- Shock and vibration according to EN60068-2-27 EN60068-2-6
- Electromagnetic compatibility (EMC) according to EN60947-5-2

Housing	Flush mounting Non flush mounting	L1	L2	L3	L4	L5	Cable diameter	Body diameter (d)	Max switching frequency (f)	Rated operational current (I _o)	Nominal sensing distance (S _n) ± 10%	ORDERING REFERENCES	
												mm	mm
B - 3	•	-	43	7	-	50	4	M12 x 1	25	500	2	AC12/4609S	AC12/4619S
D	•	-	50	10	20	80	4	M12 x 1	25	500	2	AC12/4709S	AC12/4719S
B - 3	•	7	36	7	-	50	4	M12 x 1	25	500	4	AC12/5609S	AC12/5619S
D	•	7	43	10	20	80	4	M12 x 1	25	500	4	AC12/5709S	AC12/5719S
C	•	-	60	10	-	70	5	M18 x 1	25	500	5	AC18/4609S	AC18/4619S
B - 2	•	-	50	-	-	50	5	M18 x 1	25	500	5	AC18/4A09S	AC18/4A19S
D - 1	•	-	60	12	20	92	6	M18 x 1	25	500	5	AC18/4709S	AC18/4719S
B - 2	•	10	40	-	-	50	5	M18 x 1	25	500	8	AC18/5A09S	AC18/5A19S
D - 1	•	10	50	12	20	92	6	M18 x 1	25	500	8	AC18/5709S	AC18/5719S
C	•	10	50	10	-	70	5	M18 x 1	25	500	8	AC18/5609S	AC18/5619S

CYLINDRICAL INDUCTIVE SENSORS IN METAL HOUSING

- Diameters 30 - 45 mm
- Amplified in a.c. 2 wires
- Cable output



Diameter	M30 x 1,5	M45 x 1,5
Nut	Size	SW17
	Thickness mm	5
Max tightening torque Nm	80	70

Materials:

- Cable: 2 m PVC CEI 20 - 22 II; 90°C; 300 V; O.R.
- Housing: nickel plated brass
- Sensing face: plastic

Technical data:

- Supply voltage (U_B): 20 ÷ 240 Vac
- Electrical system frequency: 40 ÷ 60 Hz
- Off-state current (I_o): ≤ 1,5 mA at 110 Vac
- Minimum operational current (I_m): 5 mA
- Voltage drop (U_d): ≤ 5 V
- Temperature range: - 25° ÷ + 70°C
- Max thermal drift of sensing distance S_r : ± 10%
- Repeat accuracy (R): 2%
- Switching hysteresis (H): 10%
- Degree of protection: IP67
- Switch status indicator: yellow LED
- Cable conductor cross section: 0,75 mm²
- Suppression of initial false impulse
- Class 2 equipment according to IEC 536
- Shock and vibration according to EN60068-2-27 EN60068-2-6
- Electromagnetic compatibility (EMC) according to EN60947-5-2

Housing	Flush mounting Non flush mounting	L1	L2	L3	L4	L5	Cable diameter	Body diameter (d)	Max switching frequency (f)	Rated operational current (I _o)	Nominal sensing distance (S _n) ± 10%	ORDERING REFERENCES	
		mm	mm	mm	mm	mm						mm	mm
G	•	-	50	10	-	60	6	M30 x 1,5	20	500	10	 AC30/4609S AC30/4709S AC30/5609S AC30/5709S	 AC30/4619S AC30/4719S AC30/5619S AC30/5719S
D-2	•	-	65	10	20	95	6	M30 x 1,5	20	500	10		
G	•	15	35	10	-	60	6	M30 x 1,5	20	500	15		
D-2	•	15	50	10	20	95	6	M30 x 1,5	20	500	15	AC45/4609S AC45/4619S	
G-1	•	-	50	10	-	60	6	M45 x 1,5	20	500	20		