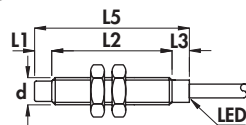
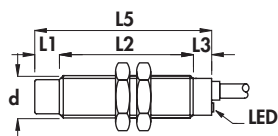


Voltage 20 ÷ 240 V_~ •
Amplified in d.c. + a.c. 2 wires •
Cable output •

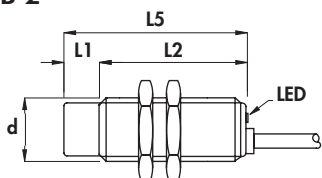
Housing B-6



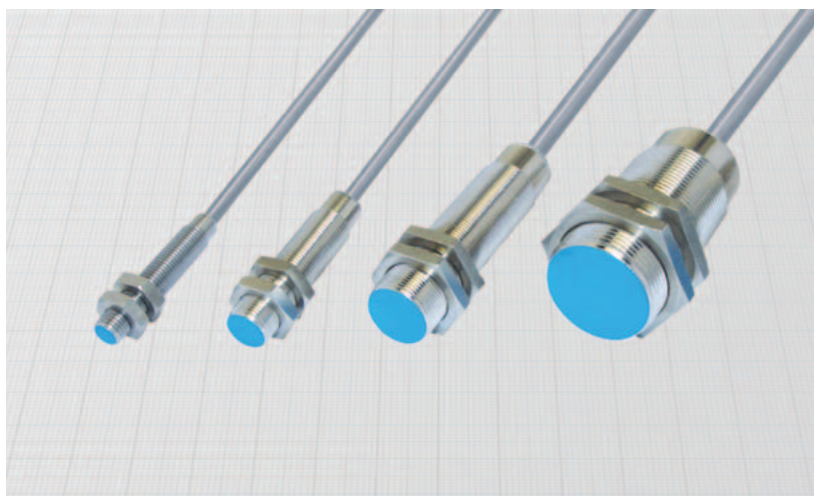
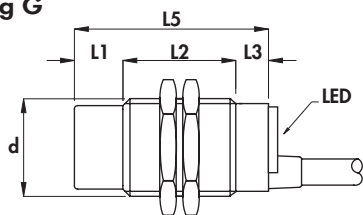
Housing B-3



Housing B-2



Housing G



Diameter		M8 x 1	M12 x 1	M18 x 1	M30 x 1,5
Nut	Size	SW13	SW17	SW24	SW36
	Thickness mm	4	4	4	5
Max tightening torque Nm		10	15	35	80

Materials:

- Cable: 2 m PVC CEI 20 - 22 II; 90°C; 300 V; O.R.
- Housing 8 mm: stainless steel
- Housing 12-18 - 30 mm: nickel plated brass
- Sensing face: plastic

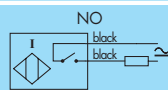
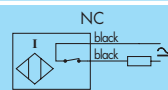
General Features:

These sensors are able to work with either direct or alternate current. Voltage drop and residual current are very low. They are not polarized and the load can be connected on both the leads. In many applications they can be used to replace mechanical microswitches.

Technical data:

- Supply voltage (U_B): 20 ÷ 240 Vdc/Vac
- Electrical system frequency: 40 ÷ 60 Hz
- Off-state current (I_o) at 24 V: ≤ 1 mA
- Off-state current (I_o) at 220 V: ≤ 1,5 mA
- Minimum operational current (I_m): 5 mA
- Voltage drop (U_d): ≤ 5 V
- Temperature range: - 25° ÷ + 70°C
- Max thermal drift of sensing distance S_r: ± 10%
- Repeat accuracy (R): 2%
- Switching hysteresis (H): 10%
- Degree of protection: IP67
- Switch status indicator: yellow LED
- Cable conductor cross section: 0,35 mm² on 8 and 12 mm
0,50 mm² on 18 mm
0,75 mm² on 30 mm

- Protected against short-circuit and overload (versions with letter K)
- Suppression of initial false impulse
- Class 2 equipment according to IEC 536
- Shock and vibration according to EN60068-2-27 EN60068-2-6
- Electromagnetic compatibility (EMC) according to EN60947-5-2

Housing	Flush mounting Non flush mounting	L1	L2	L3	L4	L5	Cable diameter	Body diameter (d)	Max switching frequency (f) in d.c.	Max switching frequency (f) in a.c.	Rated operational current (I _e)	Nominal sensing distance (S _n) ± 10%	ORDERING REFERENCES	
		mm	mm	mm	mm	mm								
B-6	•	-	40	5	-	45	3,5	M8 x 1	1000	25	100	1,5	AX8/4609S	AX8/4619S
B-6	•	5	35	5	-	45	3,5	M8 x 1	800	25	100	2,5	AX8/5609S	AX8/5619S
B-3	•	-	43	7	-	50	4	M12 x 1	800	25	100	2	AX12/4609KS	AX12/4619KS
B-3	•	7	36	7	-	50	4	M12 x 1	600	25	100	4	AX12/5609KS	AX12/5619KS
B-2	•	-	50	-	-	50	5	M18 x 1	800	25	200	5	AX18/4A09KS	AX18/4A19KS
B-2	•	10	40	-	-	50	5	M18 x 1	400	25	200	8	AX18/5A09KS	AX18/5A19KS
G	•	-	50	10	-	60	6	M30 x 1,5	400	25	200	10	AX30/4609KS	AX30/4619KS
G	•	15	35	10	-	60	6	M30 x 1,5	200	25	200	15	AX30/5609KS	AX30/5619KS