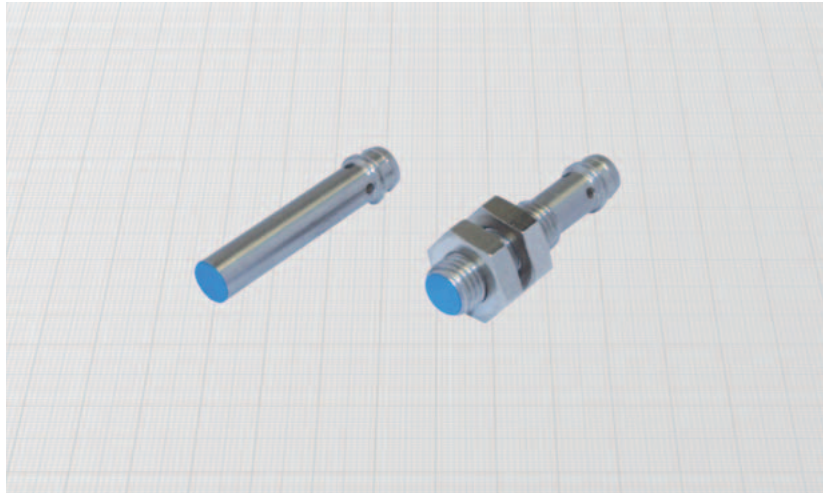
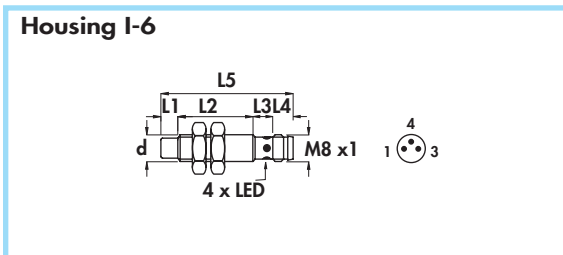
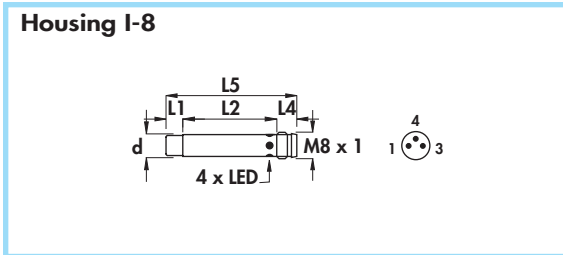


**SHORT SERIES - Extended sensing distance •  
Amplified in d.c. •  
Connector output M8 x 1 •**



|                          |              |      |
|--------------------------|--------------|------|
| Diameter                 | M8 x 1       |      |
| Nut                      | Size         | SW13 |
|                          | Thickness mm | 4    |
| Max tightening torque Nm | 10           |      |

**Materials:**

- Housing: stainless steel
- Sensing face: plastic

**Technical data:**

- Supply voltage ( $U_B$ ):  $7 \div 30$  Vdc
- Max ripple: 10%
- No-load supply current ( $I_0$ ):  $\leq 10$  mA
- Voltage drop ( $U_d$ ):  $\leq 1,5$  V
- Temperature range:  $-20^\circ \div +70^\circ\text{C}$
- Max thermal drift of sensing distance  $S_r$ :  $\pm 10\%$
- Repeat accuracy (R): 4%
- Switching hysteresis (H): 10%
- Degree of protection: IP67
- Switch status indicator: yellow LED
- Protected against short-circuit and overload
- Protected against any wrong connection
- Suppression of initial false impulse
- Electromagnetic compatibility (EMC) according to EN60947-5-2
- Shock and vibration resistance according to EN60068-2-27 EN60068-2-6

| Housing | Flush mounting (*)<br>Non flush mounting | L1 | L2   | L3  | L4  | L5 | Female connector | Body diameter (d) | Max switching frequency (f) | Rated operational current (I <sub>e</sub> ) | Nominal sensing distance (S <sub>n</sub> ) ±10% | ORDERING REFERENCES      |  |                       |                       |
|---------|--|----|------|-----|-----|----|------------------|-------------------|-----------------------------|---|---|--------------------------|--|-----------------------|-----------------------|
|         |  |    |      |     |     |    |                  |                   |                             |   |   | PNP (positive switching) |  |                       |                       |
| I-8     | •  | -  | 29,5 | -   | 5,5 | 35 | 11 - 12          | 6,5               | 800                         | 200   | 2,5   |                          |  | <b>DSE6,5/4909LKS</b> | <b>DSE6,5/4919LKS</b> |
| I-6     | •  | -  | 21   | 8,5 | 5,5 | 35 | 11 - 12          | M8 x 1            | 800                         | 200   | 2,5   |                          |  | <b>DSE8/4909KS</b>    | <b>DSE8/4919KS</b>    |

(\*) Note: See mounting precautions (pag. 22)

**NPN (negative switching)**  
Use the above mentioned part number changing the last number 9 with 8 (ie. DSE6,5/4908LKS)

|  |  |
|--|--|
|  |  |
|--|--|